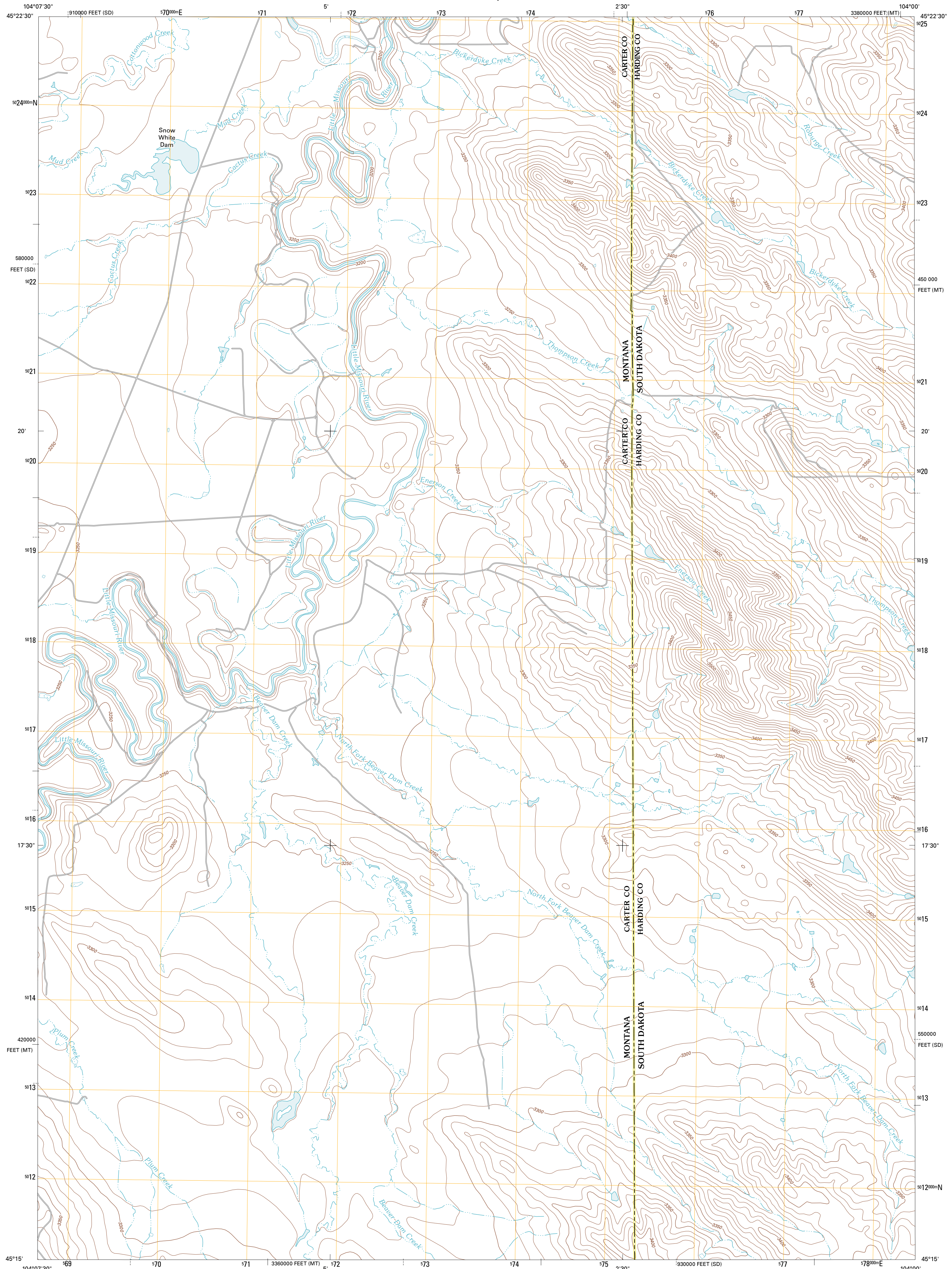




U.S. DEPARTMENT OF THE INTERIOR  
U. S. GEOLOGICAL SURVEY



CACTUS CREEK EAST QUADRANGLE  
MONTANA-SOUTH DAKOTA  
7.5-MINUTE SERIES

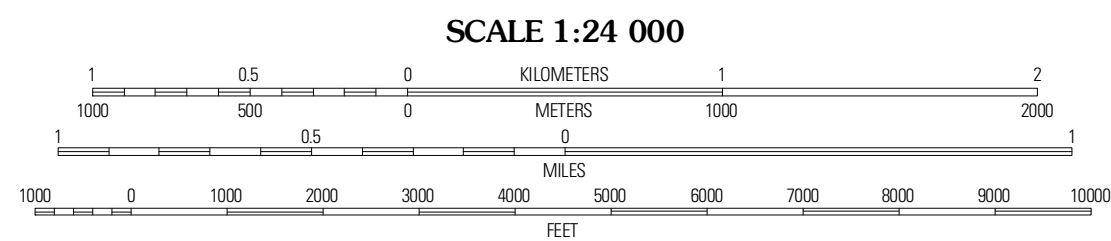


Produced by the United States Geological Survey  
North American Datum of 1983 (NAD83)  
World Geodetic System of 1984 (WGS84). Projection and  
1 000 meter grid: Universal Transverse Mercator, Zone 13T  
10 000-foot ticks: Montana Coordinate System of 1983,  
South Dakota Coordinate System of 1983 (north zone)

Imagery.....NAIP, July 2009  
Roads.....©2006-2010 Tele Atlas  
Names.....National Hydrography Dataset, 2010  
Hydrography.....National Hydrography Dataset, 2009  
Contours.....National Elevation Dataset, 1999  
Boundaries.....Census, IBWC, IBC, USGS, 1972 - 2010

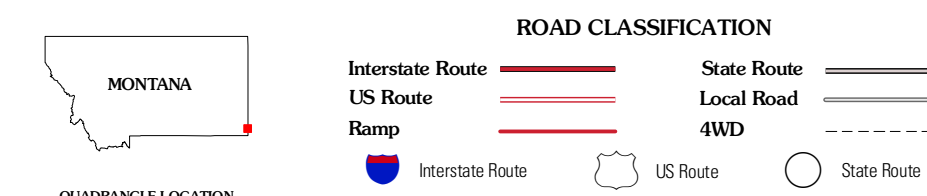
UTM GRID AND 2011 MAGNETIC NORTH  
DECLINATION AT CENTER OF SHEET

U.S. National Grid  
100,000 m Square ID  
EL  
Grid Zone Designation  
13T



CONTOUR INTERVAL 10 FEET  
NORTH AMERICAN VERTICAL DATUM OF 1988

This map was produced to conform with version 0.5.10  
of the USGS US Topo Product Standard.  
A metadata file associated with this product is draft version 0.5.16



QUADRANGLE LOCATION

Capitol NW	Capitol	J K Butte
Cactus Creek West	Cactus Creek East	Gustave
Elkhorn Creek West	Elkhorn Creek East	Indian Butte

CACTUS CREEK EAST, MT-SD  
2011