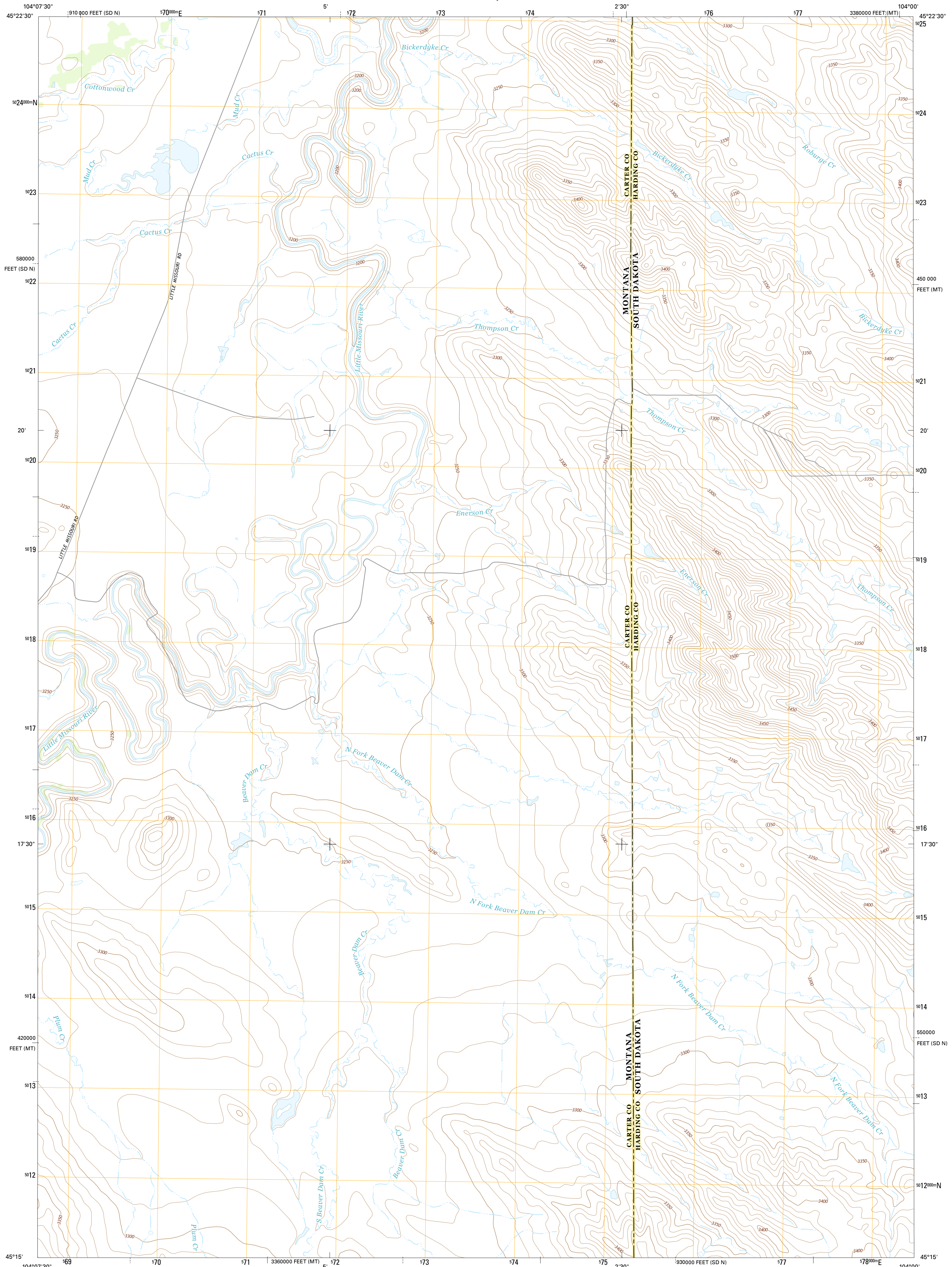




U.S. DEPARTMENT OF THE INTERIOR
U.S. GEOLOGICAL SURVEY



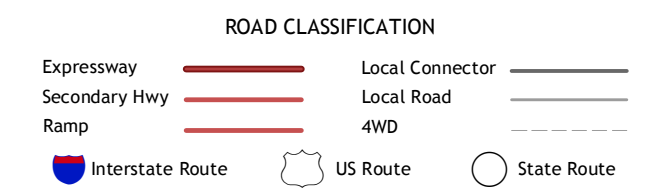
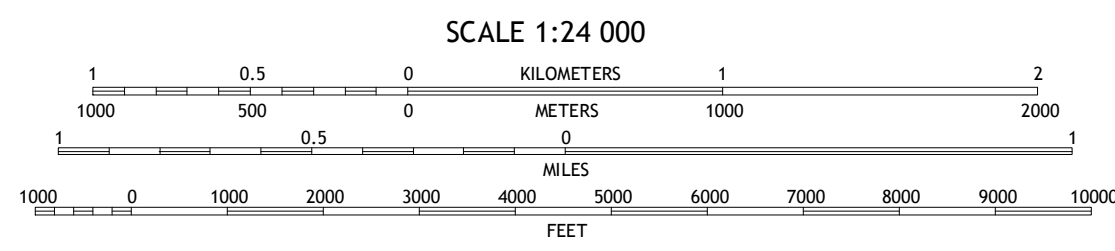
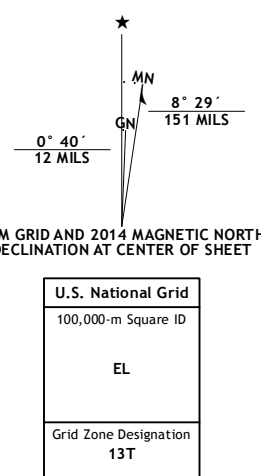
CACTUS CREEK EAST QUADRANGLE
MONTANA-SOUTH DAKOTA
7.5-MINUTE SERIES



Produced by the United States Geological Survey
North American Datum of 1983 (NAD83)
World Geodetic System of 1984 (WGS84), Projection and
1 000-meter grid: Universal Transverse Mercator, Zone 13T
10 000-foot ticks: Montana Coordinate System of 1983, South
Dakota Coordinate System of 1983 (north zone)

This map is not a legal document. Boundaries may be
generalized for this map scale. Private lands within government
reservations may not be shown. Obtain permission before
entering private lands.

Imagery.....NAIP, July 2011
Roads.....HERE, ©2013
Names.....GNIS, 2013
Hydrography.....National Hydrography Dataset, 2011
Contours.....National Elevation Dataset, 1999
Boundaries.....Multiple sources; see metadata file 1972 - 2013
Public Land Survey System.....BLM, 2011



1	2	3
4	5	6
7	8	

ADJOINING QUADRANGLES

- 1 Capitol NW
- 2 Capitol
- 3 J K Butte
- 4 Cactus Creek West
- 5 Gustave
- 6 Elkhorn Creek West
- 7 Elkhorn Creek East
- 8 Indian Butte

CACTUS CREEK EAST, MT-SD
2014

