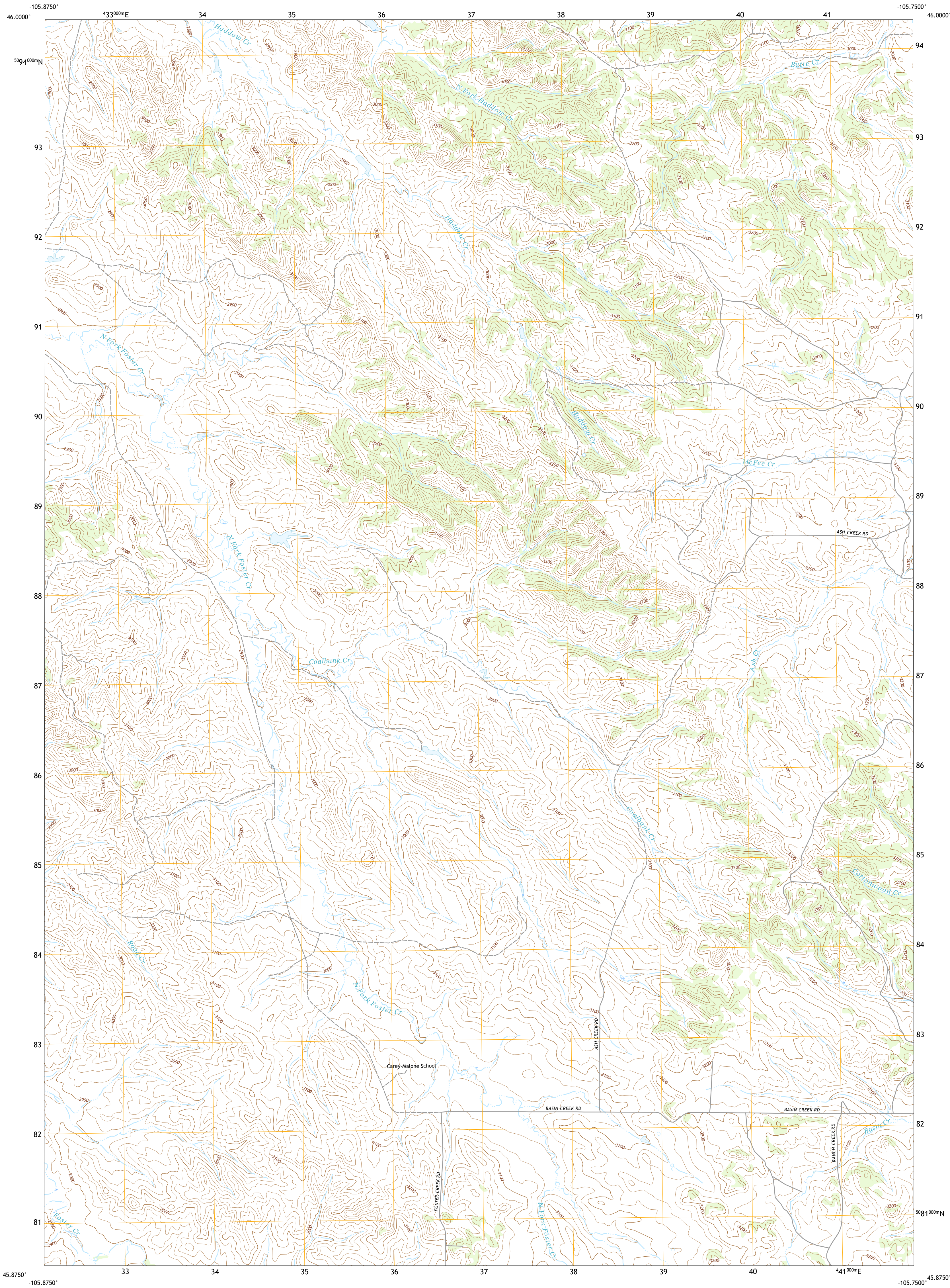




U.S. DEPARTMENT OF THE INTERIOR  
U.S. GEOLOGICAL SURVEY



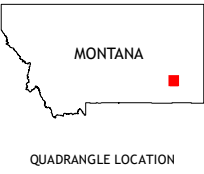
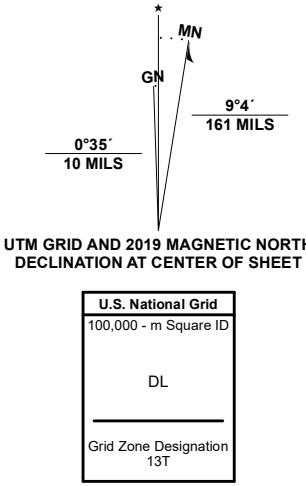
CAREY-MALONE SCHOOL QUADRANGLE  
MONTANA - CUSTER COUNTY  
7.5-MINUTE SERIES



Produced by the United States Geological Survey

North American Datum of 1983 (NAD83)  
World Geodetic System of 1984 (WGS84). Projection and  
1 000-meter grid; Universal Transverse Mercator, Zone 13T  
This map is not a legal document. Boundaries may be  
generalized for this map scale. Private lands within government  
reservations may not be shown. Obtain permission before  
entering private lands.

Imagery.....NAIP, September 2015 - January 2016  
Roads.....U.S. Census Bureau, 2016  
Names.....GNIS, 1980  
Hydrography.....National Hydrography Dataset, 2003 - 2019  
Contours.....National Elevation Dataset, 2009  
Boundaries.....Multiple sources; see metadata file 2018 - 2019  
Public Land Survey System.....BLM, 2018  
Wetlands.....FWS National Wetlands Inventory 2005 - 2006



|   |   |   |
|---|---|---|
| 1 | 2 | 3 |
| 4 | 5 | 6 |
| 7 | 8 | 9 |

- 1 Garland School
- 2 Jack Creek
- 3 Beebe SW
- 4 Fourmile Creek
- 5 Kirkpatrick Hill
- 6 North Stacey School
- 7 Foster Creek School
- 8 Volborg

| ROAD CLASSIFICATION |                 |
|---------------------|-----------------|
| Expressway          | Local Connector |
| Secondary Hwy       | Local Road      |
| Ramp                | 4WD             |
| Interstate Route    | US Route        |
|                     | State Route     |

CAREY-MALONE SCHOOL, MT  
2020

