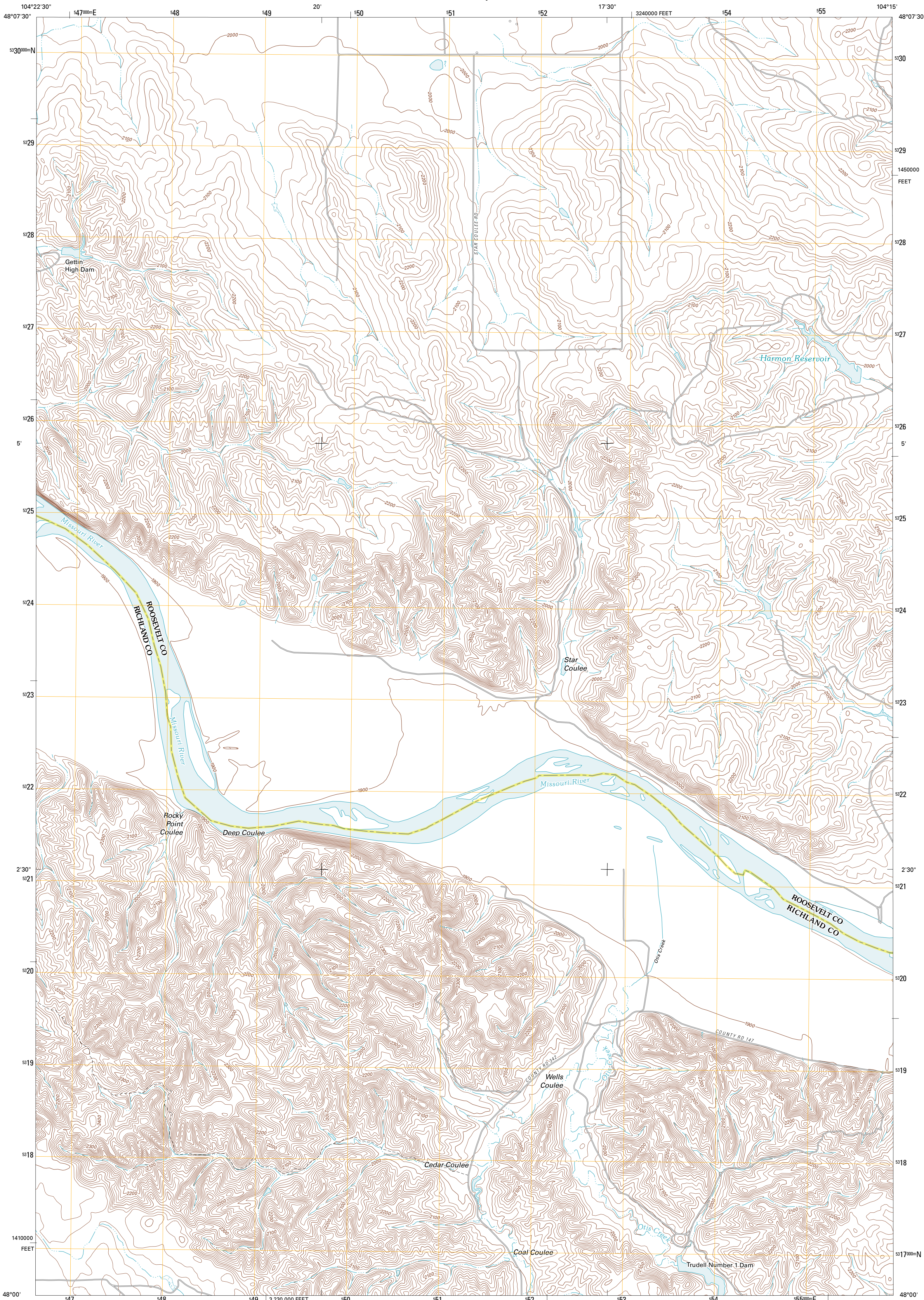




U.S. DEPARTMENT OF THE INTERIOR  
U. S. GEOLOGICAL SURVEY



CEDAR COULEE QUADRANGLE  
MONTANA  
7.5-MINUTE SERIES

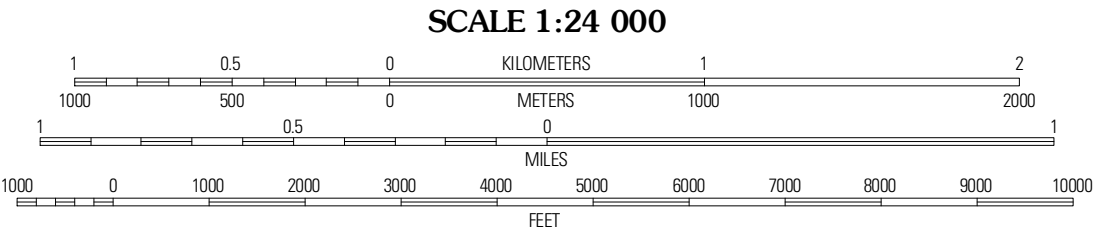


Produced by the United States Geological Survey  
North American Datum of 1983 (NAD83)  
World Geodetic System of 1984 (WGS84). Projection and  
1 000-meter grid. Universal Transverse Mercator, Zone 13U  
10 000-foot ticks: Montana Coordinate System of 1983

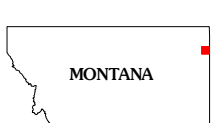
Imagery.....NAIP, July 2009  
Roads.....©2006-2010 Tele Atlas  
Names.....GNIS, 2010  
Hydrography.....National Hydrography Dataset, 2009  
Contours.....National Elevation Dataset, 2007  
Boundaries.....Census, IBWC, BGC, USGS, 1972 - 2010

UTM GRID AND 2011 MAGNETIC NORTH  
DECLINATION AT CENTER OF SHEET

U.S. National Grid  
100,000-m Square ID  
EP  
Grid Zone Designation  
13U



CONTOUR INTERVAL 20 FEET  
NORTH AMERICAN VERTICAL DATUM OF 1988  
This map was produced to conform with version 0.5.10  
of the USGS US Topo Product Standard.  
A metadata file associated with this product is draft version 0.5.16



|                 |                 |                 |
|-----------------|-----------------|-----------------|
| Mc-Cabe<br>West | Mc-Cabe<br>East | Bainville       |
| Three<br>Buttes | Cedar<br>Coulee | Bainville<br>SW |
| Blue<br>Hill    | Snow<br>Pass    | Fairview<br>NW  |

ADJOINING 7.5' QUADRANGLES

ROAD CLASSIFICATION  
Interstate Route  
US Route  
Ramp  
State Route  
Local Road  
4WD  
Interstate Route  
US Route  
State Route

CEDAR COULEE, MT  
2011