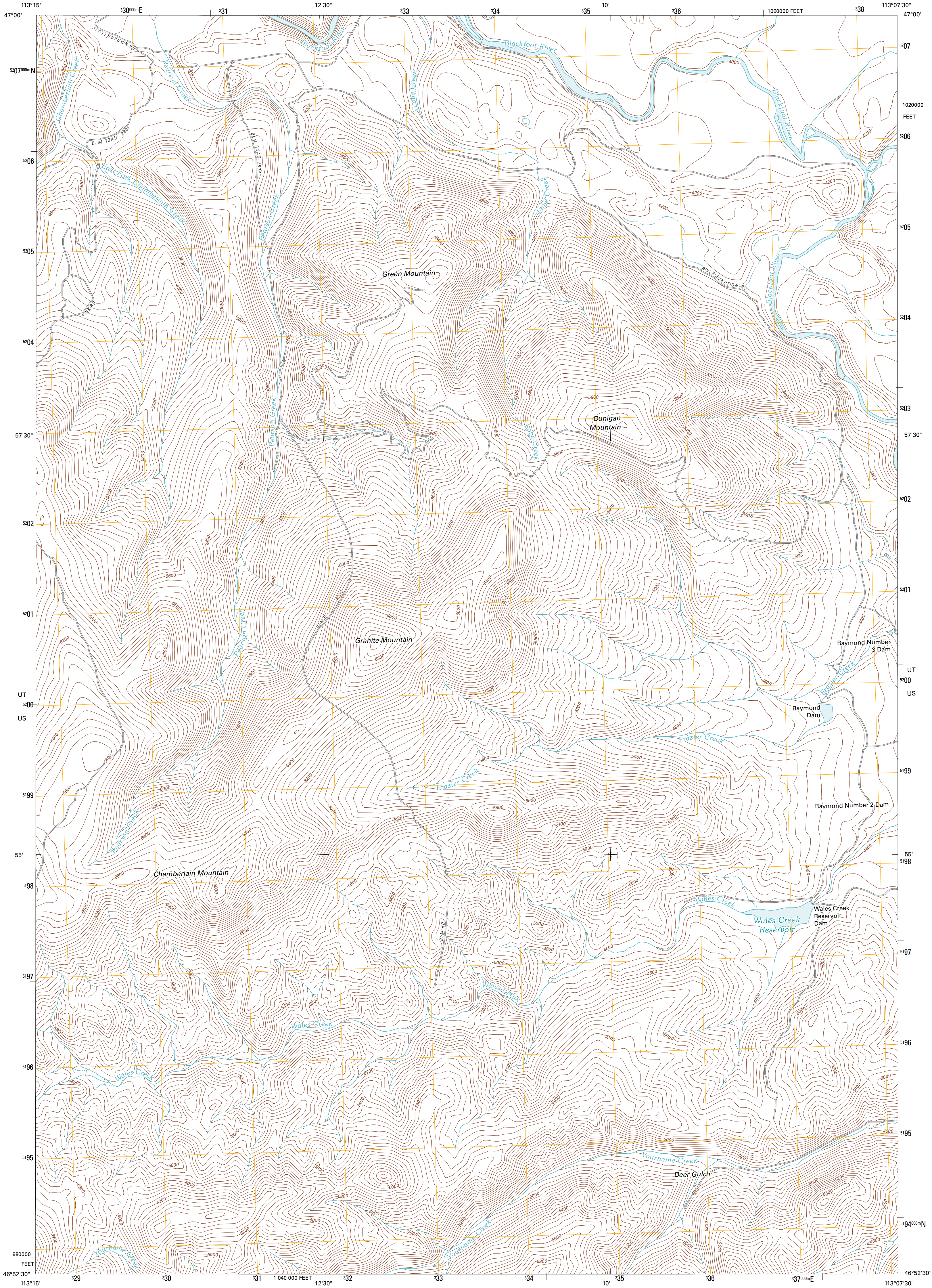




U.S. DEPARTMENT OF THE INTERIOR  
U. S. GEOLOGICAL SURVEY

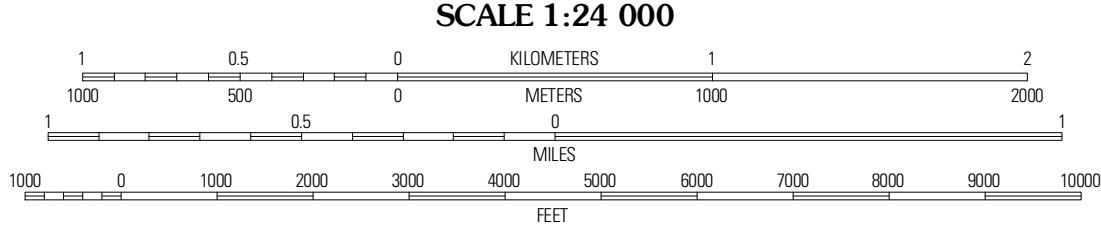
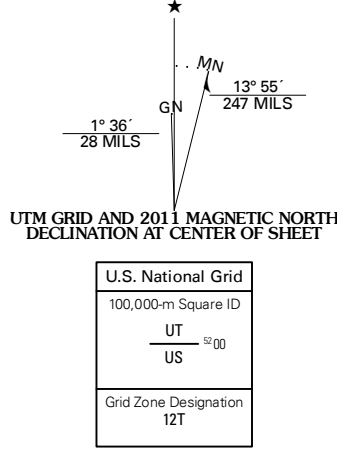


CHAMBERLAIN MOUNTAIN QUADRANGLE  
MONTANA-POWELL CO.  
7.5-MINUTE SERIES



Produced by the United States Geological Survey  
North American Datum of 1983 (NAD83)  
World Geodetic System of 1984 (WGS84). Projection and  
1 000-meter grid. Universal Transverse Mercator, Zone 12T  
10 000-foot ticks: Montana Coordinate System of 1983

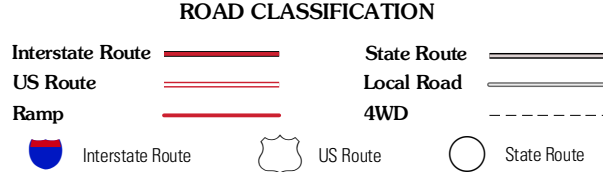
Imagery.....NAIP, July 2009  
Roads.....©2006-2010 Tele Atlas  
Names.....GNIS, 2010  
Hydrography.....National Hydrography Dataset, 2009  
Contours.....National Elevation Dataset, 2001  
Boundaries.....Census, IBWC, IBC, USGS, 1972 - 2010



CONTOUR INTERVAL 40 FEET  
NORTH AMERICAN VERTICAL DATUM OF 1988  
This map was produced to conform with version 0.5.10  
of the USGS US Topo Product Standard.  
A metadata file associated with this product is draft version 0.5.16



Woodworth	Ovando	Ovando Mountain
Bata Mountain	Chamberlain Mountain	Brown Lake
Elevation Mountain	Wild Horse Parks	Chimney Lakes



CHAMBERLAIN MOUNTAIN, MT  
2011