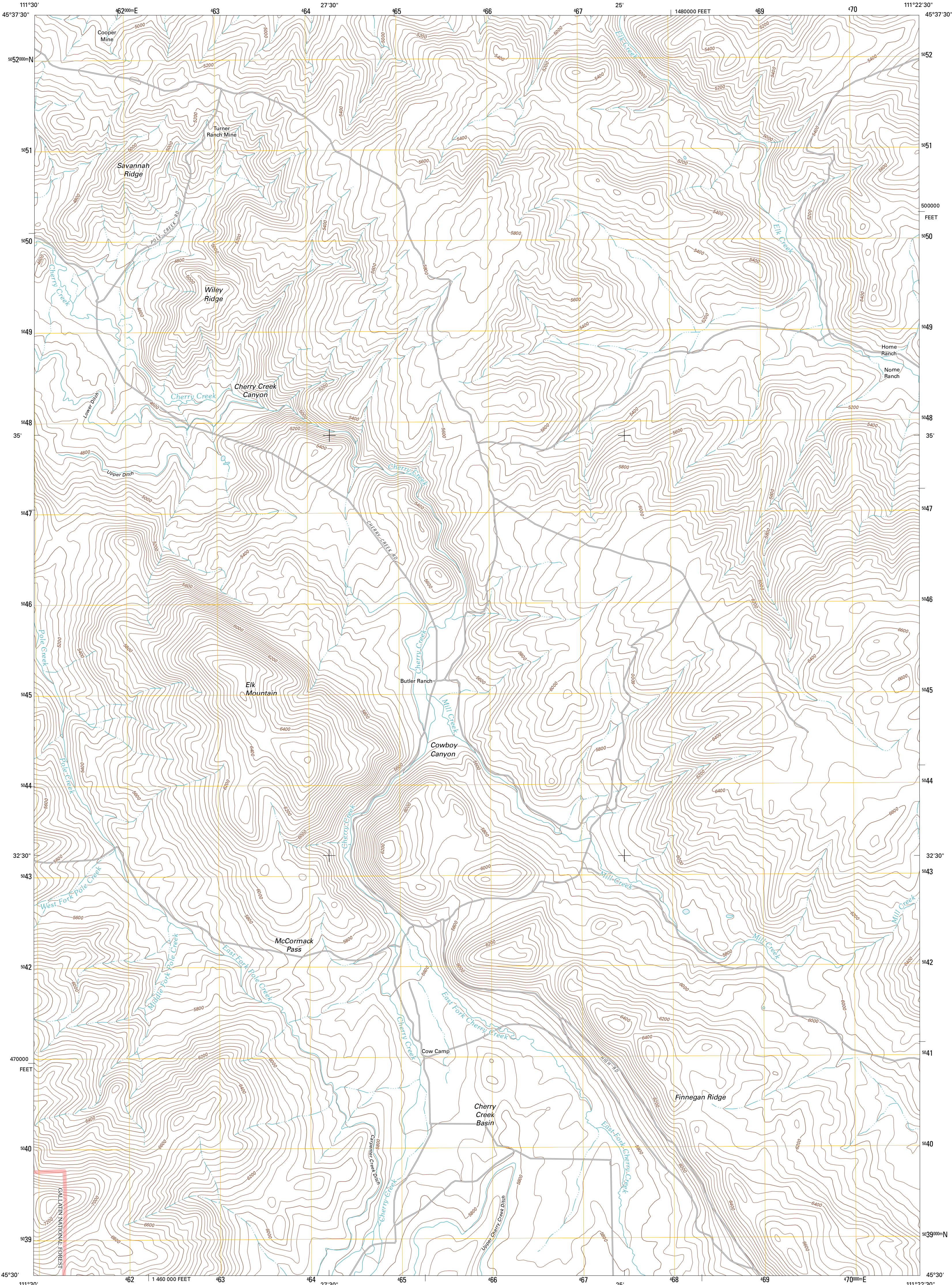




U.S. DEPARTMENT OF THE INTERIOR
U. S. GEOLOGICAL SURVEY

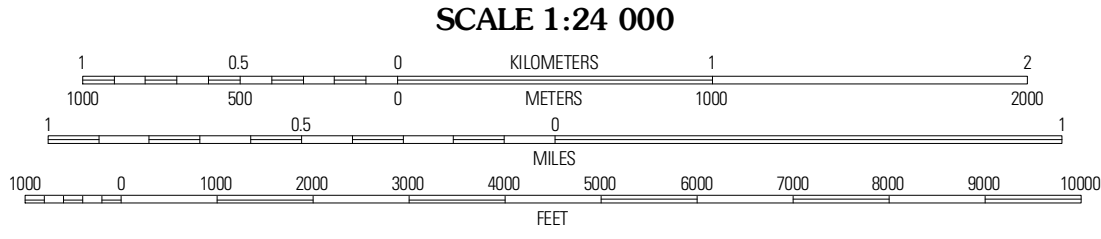
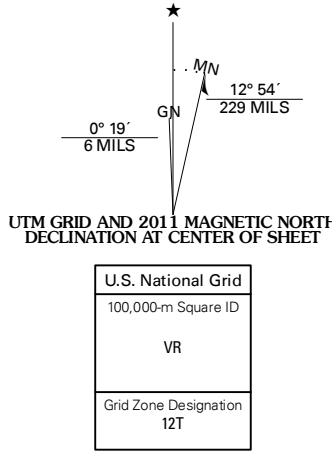


CHERRY CREEK CANYON QUADRANGLE
MONTANA-MADISON CO.
7.5-MINUTE SERIES



Produced by the United States Geological Survey
North American Datum of 1983 (NAD83)
World Geodetic System of 1984 (WGS84). Projection and
1 000-meter grid: Universal Transverse Mercator, Zone 12T
10 000-foot ticks: Montana Coordinate System of 1983

Imagery.....NAP, July 2009
Roads.....52006-2010 Tele Atlas
Roads within US Forest Service Lands.....FSTopo Data
with limited Forest Service updates, 2009
Names.....GNIS, 2010
Hydrography.....National Hydrography Dataset, 2001
Contours.....National Elevation Dataset, 2001
Boundaries.....Census, IBWC, IBC, USGS, 1972 - 2010



CONTOUR INTERVAL 40 FEET
NORTH AMERICAN VERTICAL DATUM OF 1988
This map was produced to conform with version 0.5.10
of the USGS US Topo Product Standard.
A metadata file associated with this product is draft version 0.5.16



QUADRANGLE LOCATION

Norris	Medison	Anconey
Bear Trap	Cherry	Ruby
Creek	Creek	Mountain
Cherry	Willow	Beacon
Lake	Swamp	Point

ADJOINING 7.5' QUADRANGLES

ROAD CLASSIFICATION

Interstate Route	State Route
US Route	Local Road
Ramp	4WD

Legend: Interstate Route (thick red line), US Route (thin red line), Ramp (blue line), State Route (grey line), Local Road (dashed grey line), 4WD (dashed line), FS Primary Route (thick black line), FS Passenger Route (thin black line), FS High Clearance Route (dashed black line).

Check with local Forest Service unit
for current travel conditions and restrictions.

CHERRY CREEK CANYON, MT
2011