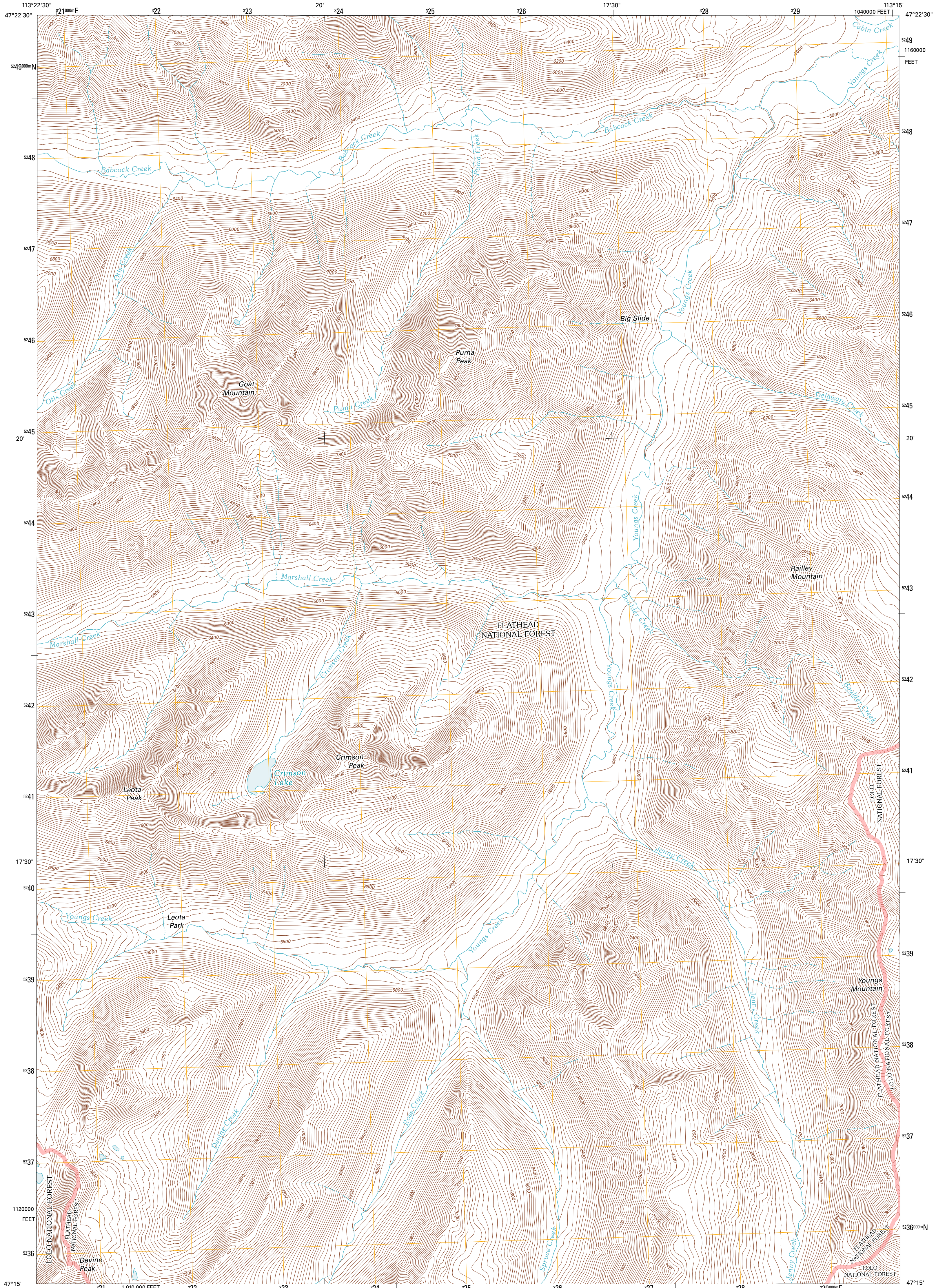




U.S. DEPARTMENT OF THE INTERIOR
U. S. GEOLOGICAL SURVEY

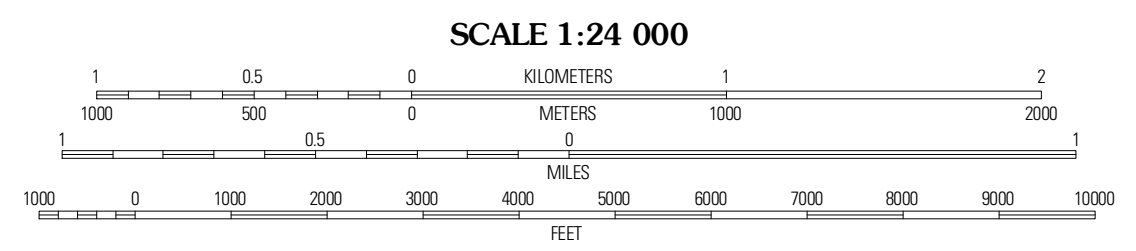
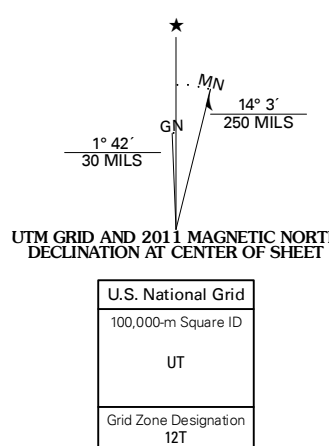


CRIMSON PEAK QUADRANGLE
MONTANA-POWELL CO.
7.5-MINUTE SERIES



Produced by the United States Geological Survey
North American Datum of 1983 (NAD83)
World Geodetic System of 1984 (WGS84). Projection and
1 000-meter grid: Universal Transverse Mercator, Zone 12T
10 000-foot ticks: Montana Coordinate System of 1983

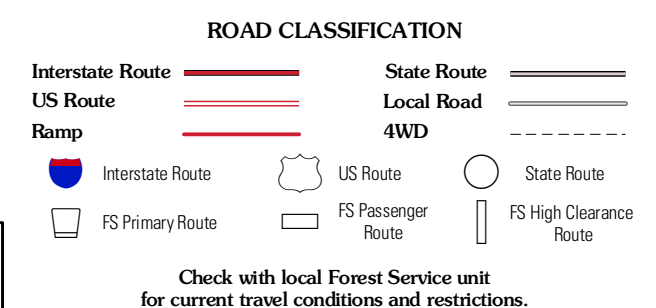
Imagery: NADP, July 2009
Roads: ©2006-2010 Tele Atlas
Roads within US Forest Service Lands: FSTopo Data
with limited Forest Service updates, 2009
Names: ©2010
Hydrography: National Hydrography Dataset, 2009
Contours: National Elevation Dataset, 1999
Boundaries: Census, IBWC, IBC, USGS, 1972 - 2010



QUADRANGLE LOCATION

Skaw Lake	Uta Mountain	Pilot Peak
Merrill Lake	Crimson Peak	Hahn Creek Pass
Seelye Lake East	Merrill Mountain	Dunham Point

ADJOINING 7.5' QUADRANGLES



CRIMSON PEAK, MT
2011