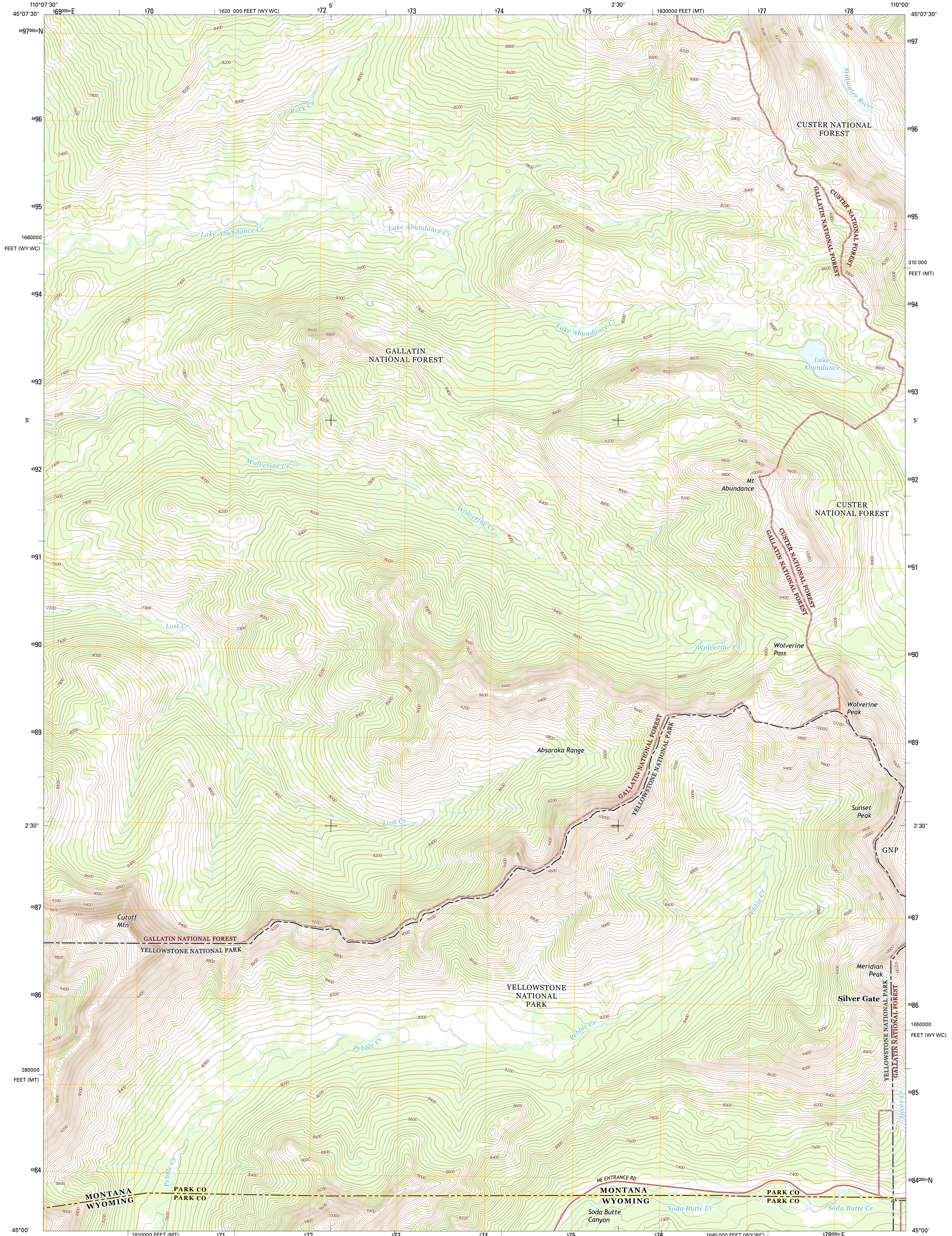




U.S. DEPARTMENT OF THE INTERIOR
U.S. GEOLOGICAL SURVEY



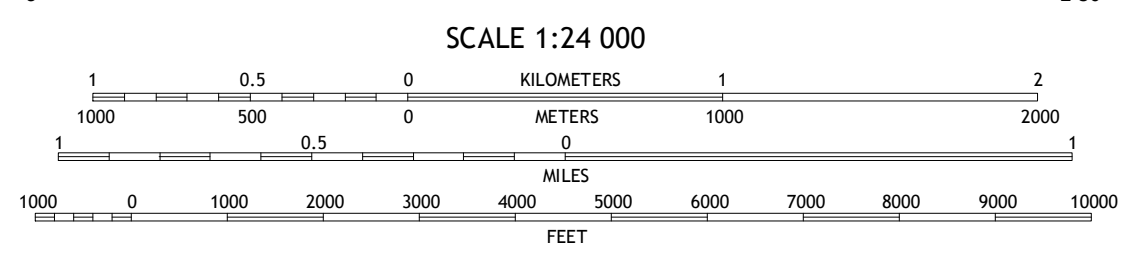
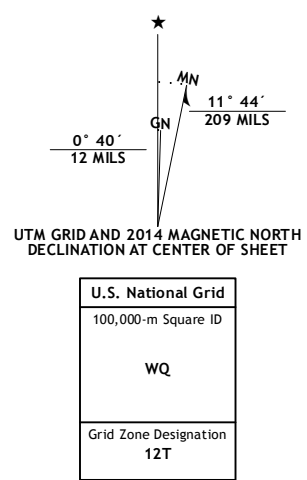
CUTOFF MOUNTAIN QUADRANGLE
MONTANA-WYOMING
7.5-MINUTE SERIES



Produced by the United States Geological Survey
North American Datum of 1983 (NAD83)
World Geodetic System of 1984 (WGS84). Projection and
1000-meter grid: Universal Transverse Mercator, Zone 12T
10 000-foot ticks: Montana Coordinate System of 1983, Wyoming
Coordinate System of 1983 (west central zone)

This map is not a legal document. Boundaries may be
generalized for this map scale. Private lands within government
reservations may not be shown. Obtain permission before
entering private lands.

Imagery: NAIP, August 2011
Roads: HERE, ©2013
Roads within US Forest Service Lands: FSTopo Data
with limited Forest Service updates, 2013
Names: GNS, 2013
Hydrography: National Hydrography Dataset, 2011
Contours: National Elevation Dataset, 2000
Boundaries: Multiple sources; see metadata file 1972 - 2013
Public Land Survey System: BLM, 2011



ROAD CLASSIFICATION

Expressway	Local Connector
Secondary Hwy	Local Road
Ramp	4WD
Interstate Route	US Route
FS Primary Route	FS Passenger Route
	FS High Clearance Route
	State Route

Check with local Forest Service unit
for current travel conditions and restrictions.

ADJOINING QUADRANGLES

1	2	3
4	5	6
7	8	

1 Haystack Peak
2 Pinnacle Mountain
3 Little Park Mountain
4 Roundhead Butte
5 Cooke City
6 Mount Hornaday
7 Abathar Peak
8 Picit Peak

CUTOFF MOUNTAIN, MT-WY
2014

