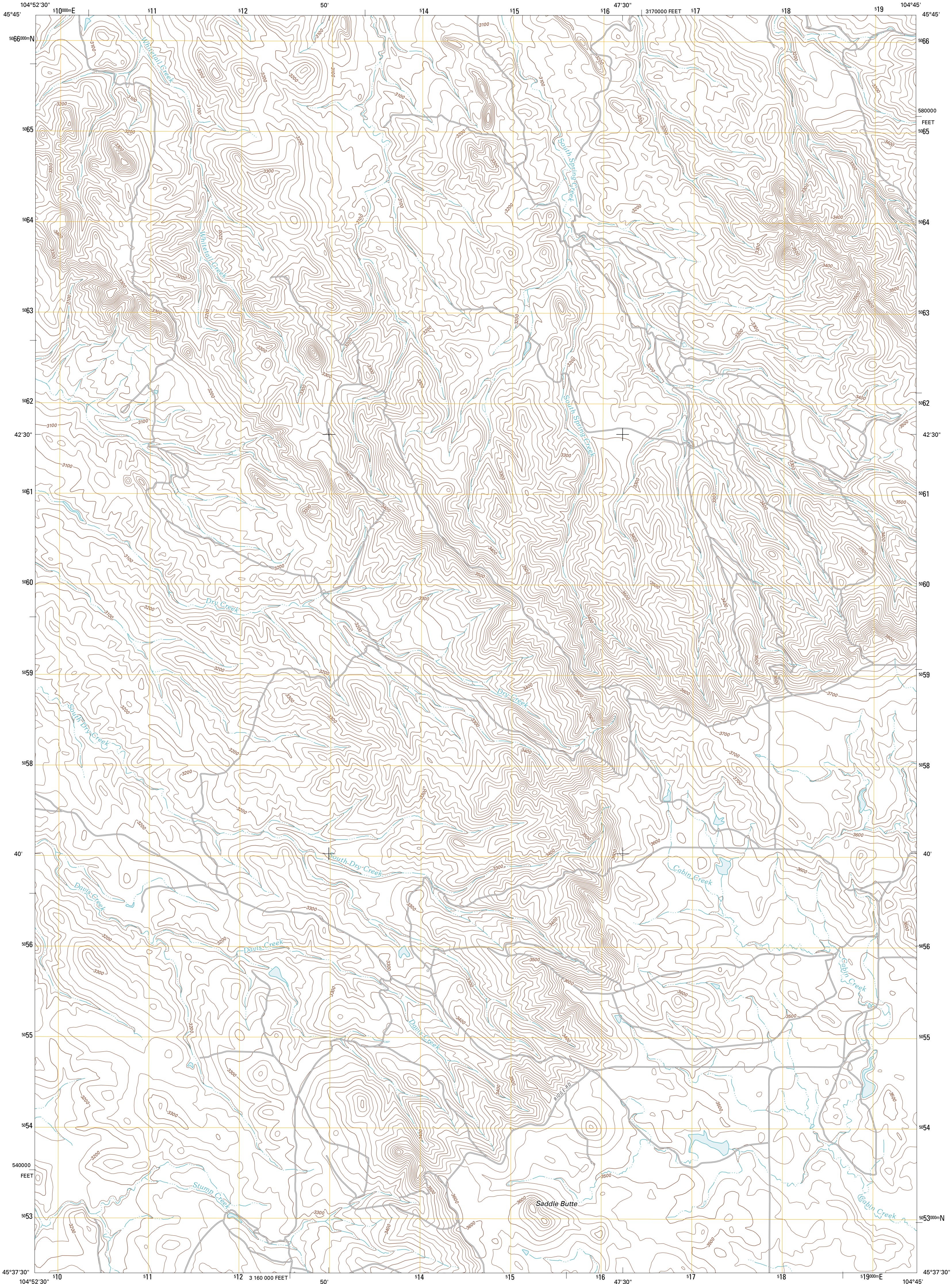




U.S. DEPARTMENT OF THE INTERIOR  
U. S. GEOLOGICAL SURVEY

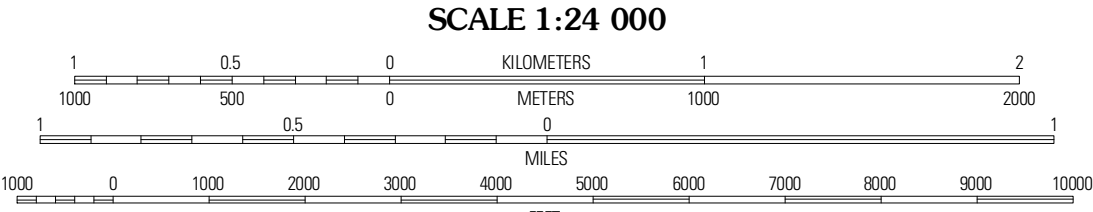
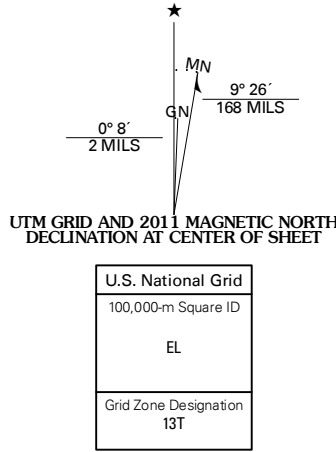


DAVIS CREEK EAST QUADRANGLE  
MONTANA-CARTER CO.  
7.5-MINUTE SERIES



Produced by the United States Geological Survey  
North American Datum of 1983 (NAD83)  
World Geodetic System of 1984 (WGS84). Projection and  
1 000-meter grid: Universal Transverse Mercator, Zone 13T  
10 000-foot ticks: Montana Coordinate System of 1983

Imagery.....NAIP, July 2009  
Roads.....©2006-2010 Tele Atlas  
Names.....GNIS, 2010  
Hydrography.....National Hydrography Dataset, 2009  
Contours.....National Elevation Dataset, 2009  
Boundaries.....Census, IBWC, IBC, USGS, 1972 - 2010



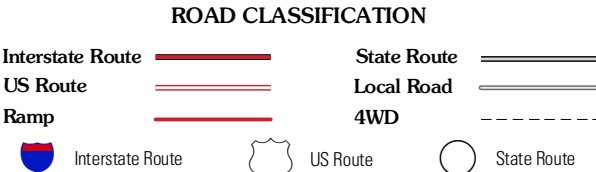
CONTOUR INTERVAL 20 FEET  
NORTH AMERICAN VERTICAL DATUM OF 1988  
This map was produced to conform with version 0.5.10  
of the USGS US Topo Product Standard.  
A metadata file associated with this product is draft version 0.5.16



QUADRANGLE LOCATION

|                        |                        |                         |
|------------------------|------------------------|-------------------------|
| Blacktail<br>Creek SW  | Blacktail<br>Creek SE  | Bever<br>Flats<br>South |
| Davis<br>Creek<br>West | Davis<br>Creek<br>East | Chalk<br>Buttes         |
| Pocahontas<br>Butte    | W L Butte              | Dutchman<br>Creek       |

ADJOINING 7.5' QUADRANGLES



DAVIS CREEK EAST, MT  
2011