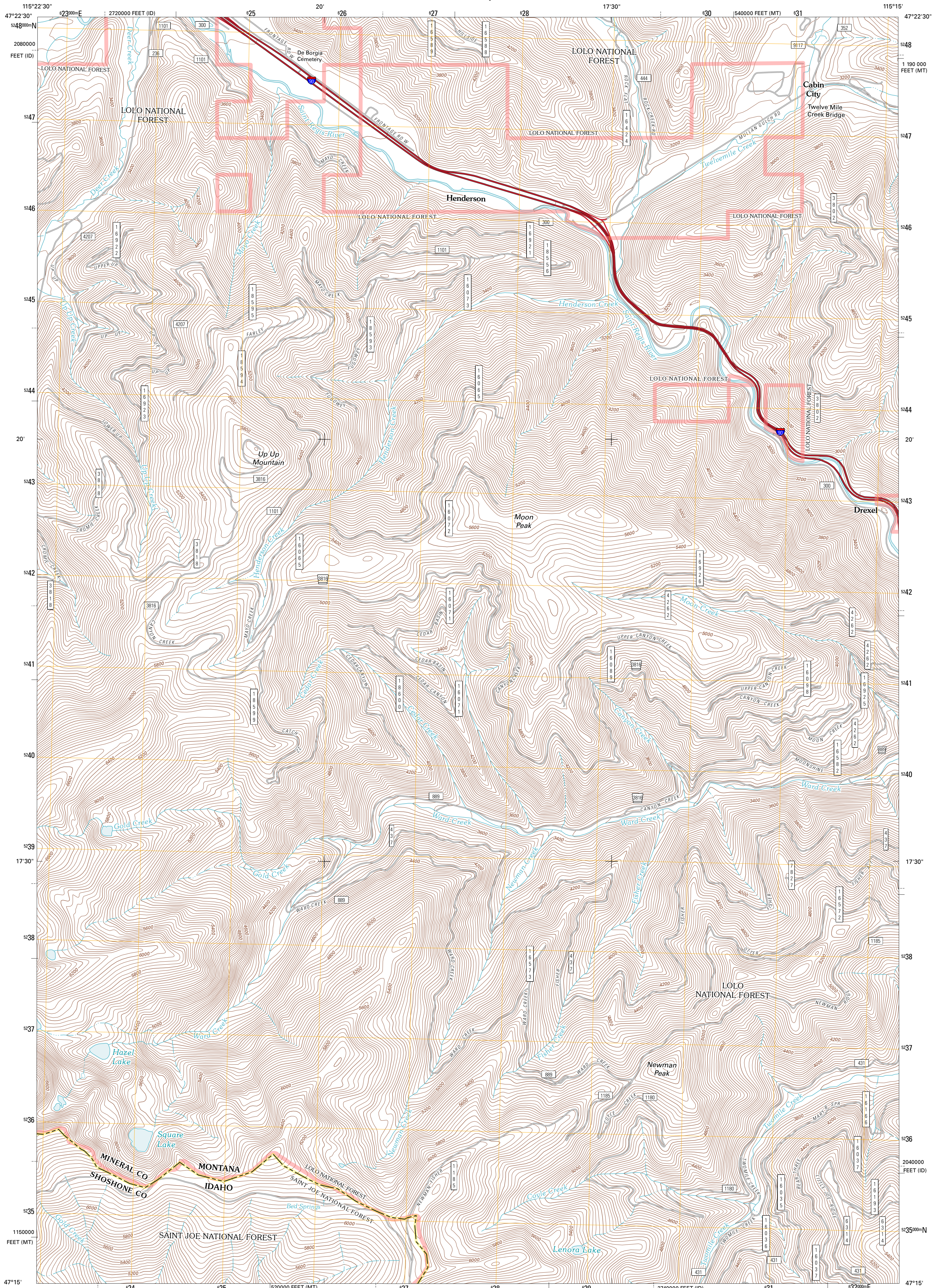




U.S. DEPARTMENT OF THE INTERIOR
U. S. GEOLOGICAL SURVEY

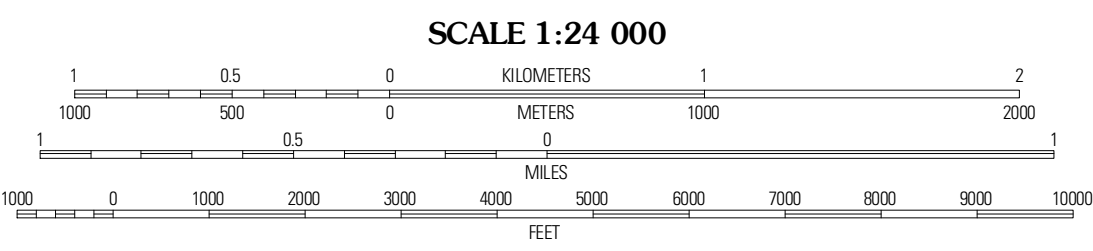
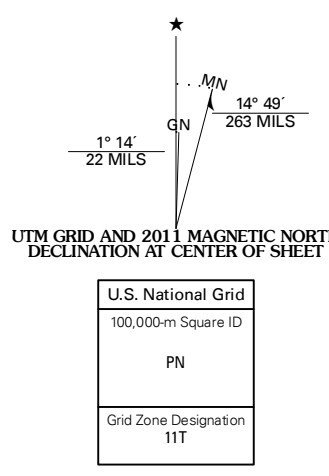


DE BORGIA SOUTH QUADRANGLE
MONTANA-IDAHO
7.5-MINUTE SERIES



Produced by the United States Geological Survey
North American Datum of 1983 (NAD83)
World Geodetic System of 1984 (WGS84). Projection and
1 000-meter grid: Universal Transverse Mercator, Zone 11T
10 000-foot ticks: Montana Coordinate System of 1983,
Idaho Coordinate System of 1983 (west zone)

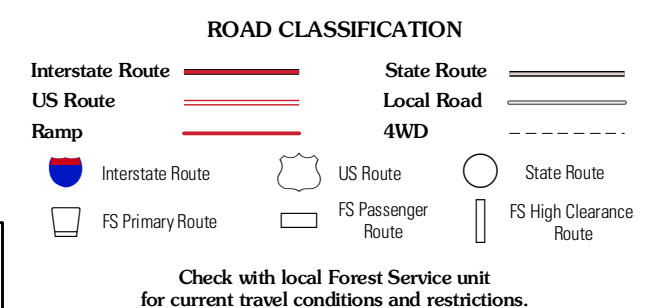
Imagery: N.A.P., July 2009
Roads: ©2006-2010 Tele Atlas
Roads within US Forest Service Lands: FSTopo Data
with limited Forest Service updates, 2009
Names: ©2006-2010 Tele Atlas
Hydrography: National Hydrography Dataset, 2009
Contours: National Elevation Dataset, 2002
Boundaries: Census, IBWC, IBC, USGS, 1972 - 2010



QUADRANGLE LOCATION

Hagan Peak	De Borgia North	Pence Peak
McGee Peak	De Borgia South	Boyd Mountain
Conrad Peak	Berge Peak	Torino Peak

ADJOINING 7.5' QUADRANGLES



Check with local Forest Service unit for current travel conditions and restrictions.

DE BORGIA SOUTH, MT-ID
2011