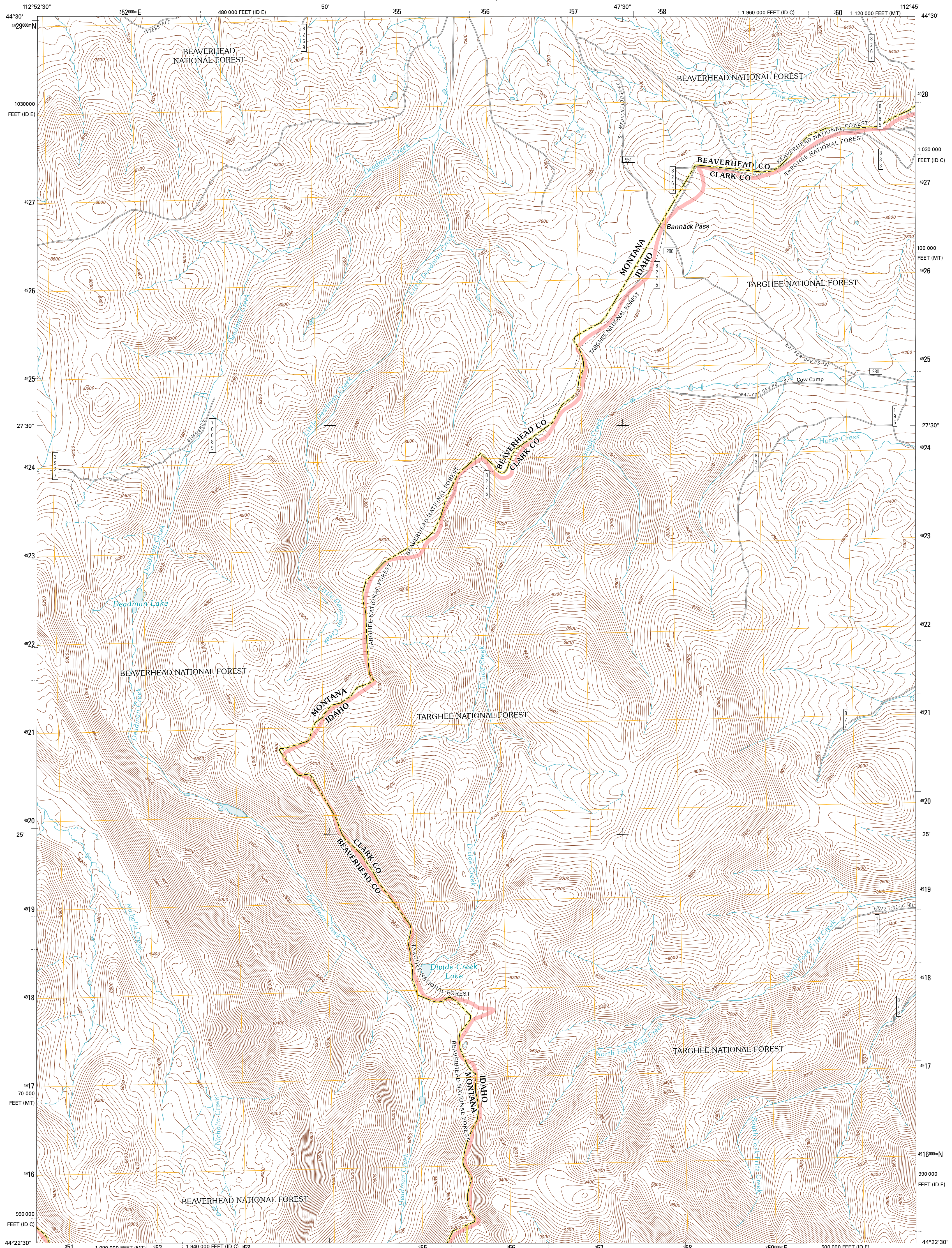




U.S. DEPARTMENT OF THE INTERIOR  
U. S. GEOLOGICAL SURVEY

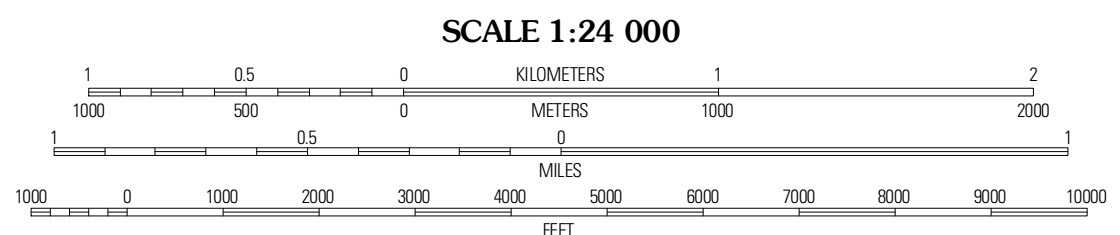
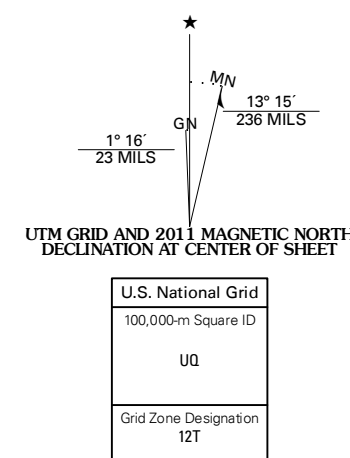


DEADMAN LAKE QUADRANGLE  
MONTANA-IDAHO  
7.5-MINUTE SERIES



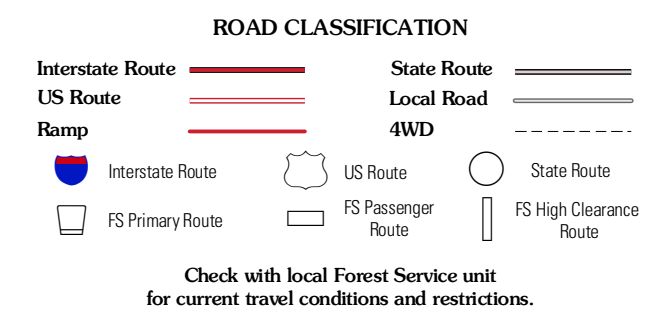
Produced by the United States Geological Survey  
North American Datum of 1983 (NAD83)  
World Geodetic System of 1984 (WGS84). Projection and  
1 000-meter grid: Universal Transverse Mercator, Zone 12T  
10 000-foot ticks: Montana Coordinate System of 1983,  
Idaho Coordinate System of 1983 (east and central zones)

Imagery: NAD, August 2009  
Roads: 02/06/2010 Tele Atlas  
Roads within US Forest Service Lands: FSTopo Data  
with limited Forest Service updates, 2009  
Names: GNIS, 2010  
Hydrography: National Hydrography Dataset, 2009  
Contours: National Elevation Dataset, 2002  
Boundaries: Census, IBWC, IBC, USGS, 1972 - 2010



Island Butte	Caboose Canyon	Gallagher Gulch
Eighteen Mile Peak	Deadman Lake	Frizz Peak
Indian Canyon	Scott Peak	Heart Mountain

ADJOINING 7.5 QUADRANGLES



DEADMAN LAKE, MT-ID  
2011