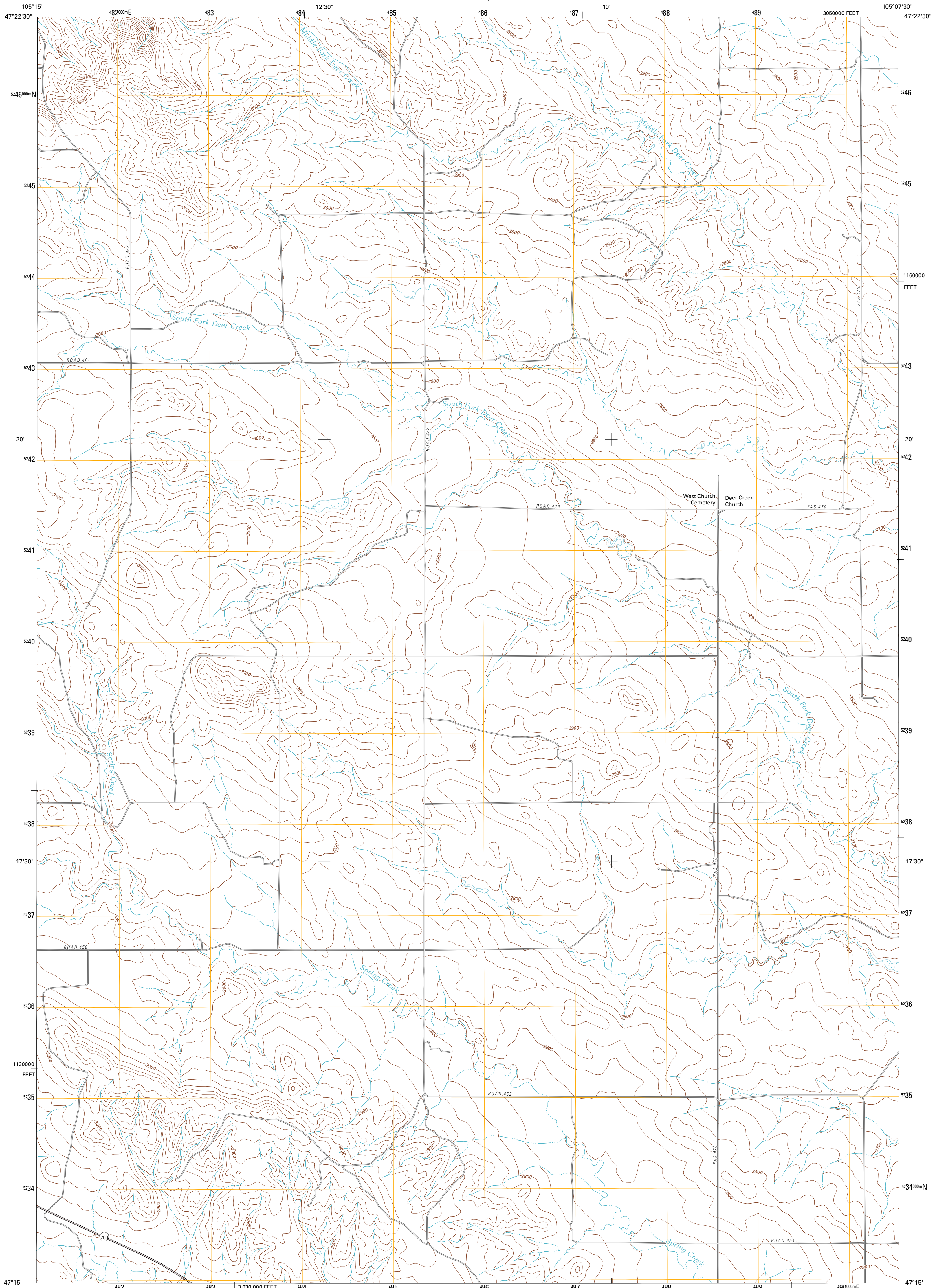




U.S. DEPARTMENT OF THE INTERIOR  
U. S. GEOLOGICAL SURVEY

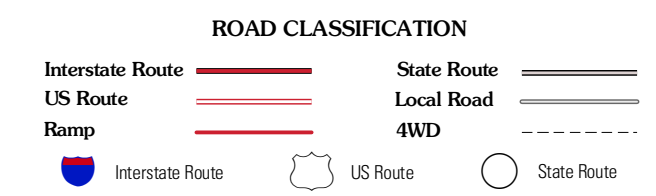
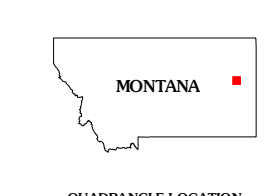
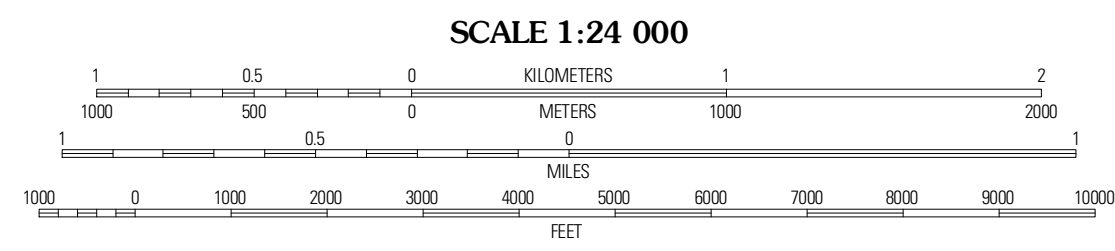
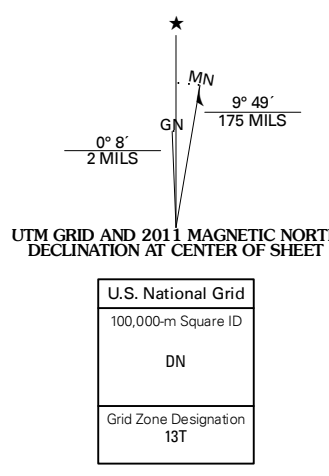


DEER CREEK CHURCH QUADRANGLE  
MONTANA-DAWSON CO.  
7.5-MINUTE SERIES



Produced by the United States Geological Survey  
North American Datum of 1983 (NAD83)  
World Geodetic System of 1984 (WGS84). Projection and  
1 000-meter grid: Universal Transverse Mercator, Zone 13T  
10 000-foot ticks: Montana Coordinate System of 1983

Imagery.....NAIP, August 2009  
Roads.....©2006-2010 Tele Atlas  
Names.....GNIS, 2010  
Hydrography.....National Hydrography Dataset, 2009  
Contours.....National Elevation Dataset, 2009  
Boundaries.....Census, BWC, IBC, USGS, 1972 - 2010



QUADRANGLE LOCATION

Olson Coulter North	Johnson Reservoir NW	Johnson Reservoir NE
Olson Coulter South	Deer Creek Church	Johnson Reservoir
Union School	Lindsay	Woodrow

CONTOUR INTERVAL 20 FEET  
NORTH AMERICAN VERTICAL DATUM OF 1988

This map was produced to conform with version 0.5.10  
of the USGS US Topo Product Standard.  
A metadata file associated with this product is draft version 0.5.16

DEER CREEK CHURCH, MT  
2011

ADJOINING 7.5 QUADRANGLES