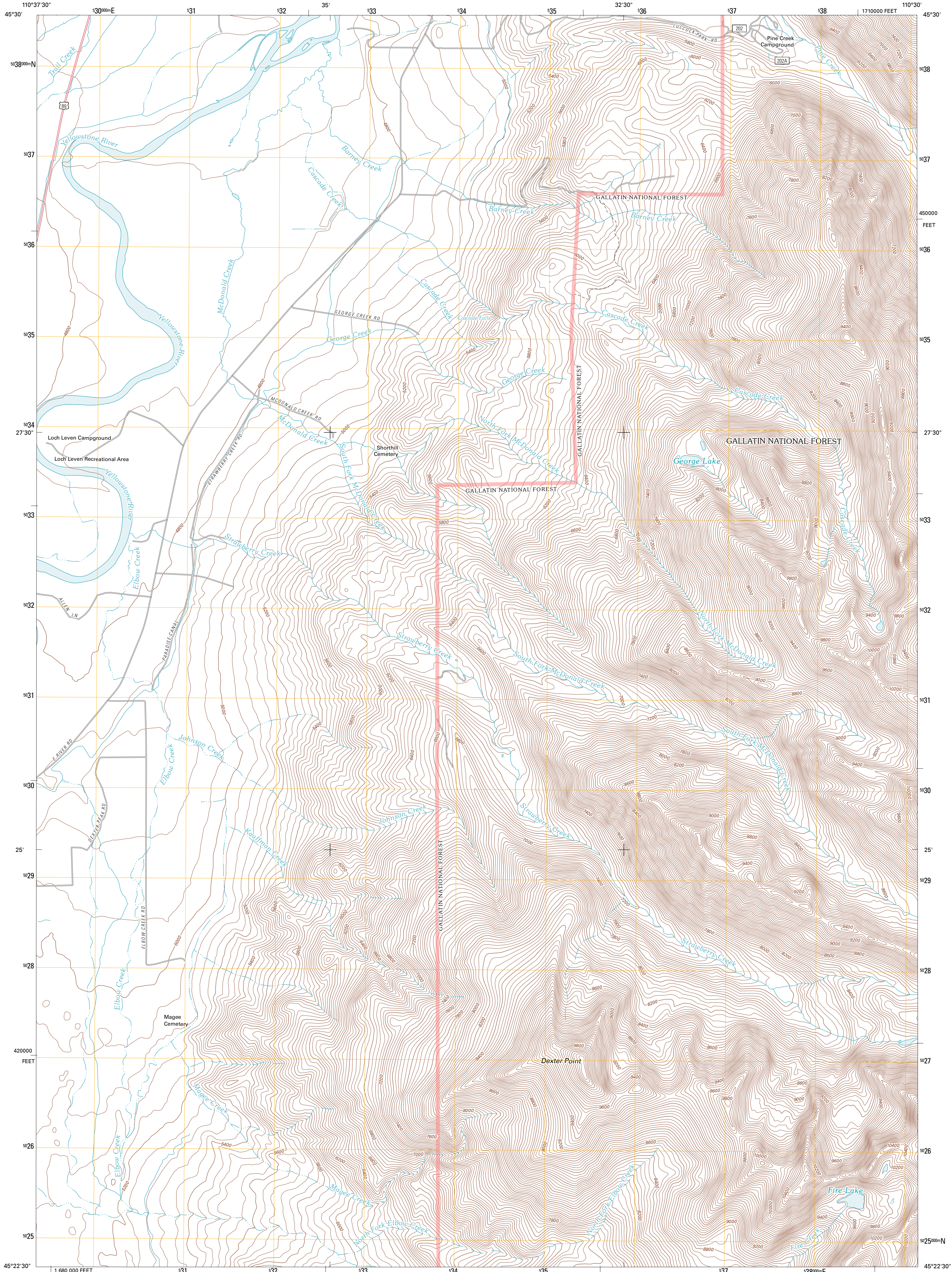




U.S. DEPARTMENT OF THE INTERIOR
U. S. GEOLOGICAL SURVEY

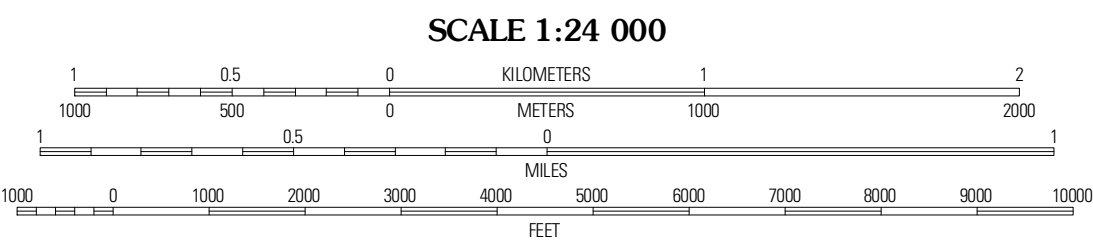
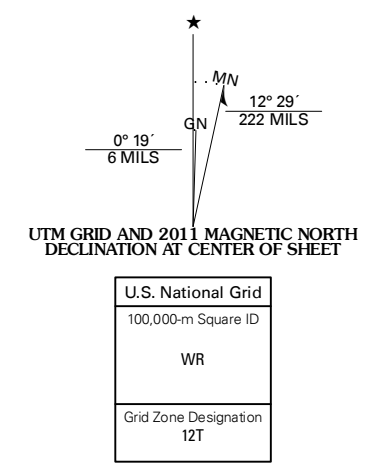


DEXTER POINT QUADRANGLE
MONTANA-PARK CO.
7.5-MINUTE SERIES



Produced by the United States Geological Survey
North American Datum of 1983 (NAD83)
World Geodetic System of 1984 (WGS84). Projection and
1 000-meter grid: Universal Transverse Mercator, Zone 12T
10 000-foot ticks: Montana Coordinate System of 1983

Imagery: NAIP, July 2009
Roads: 02/06-2010 Tele Atlas
Roads within US Forest Service Lands: FSTopo Data
with limited Forest Service updates, 2009
Names: GNS, 2010
Hydrography: National Hydrography Dataset, 2009
Contours: National Elevation Dataset, 2001
Boundaries: Census, IBWC, IBC, USGS, 1972 - 2010



CONTOUR INTERVAL 40 FEET
NORTH AMERICAN VERTICAL DATUM OF 1988
This map was produced to conform with version 0.5.10
of the USGS US Topo Product Standard.
A metadata file associated with this product is draft version 0.5.16

ROAD CLASSIFICATION

Interstate Route	State Route
US Route	Local Road
Ramp	4WD
FS Primary Route	US Route
FS Passenger Route	State Route
FS High Clearance Route	FS High Clearance Route

Check with local Forest Service unit for current travel conditions and restrictions.

QUADRANGLE LOCATION

Chimney Rock	Brisban	Linstington Peak
Phay	Dexter Point	Mount Cowen
Emigrant	Koonles Peak	The Pyramid

ADJOINING 7.5 QUADRANGLES

DEXTER POINT, MT
2011