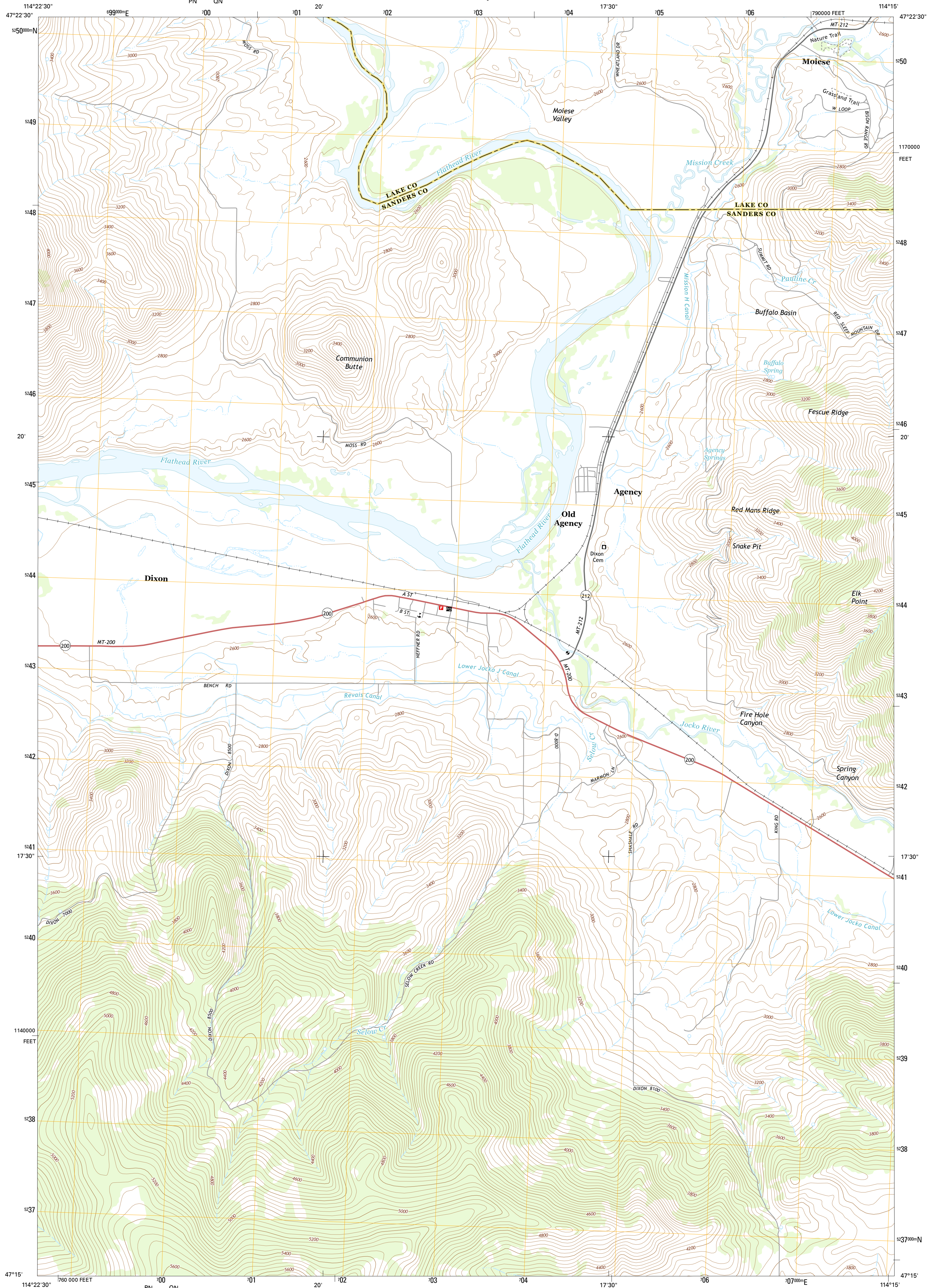




U.S. DEPARTMENT OF THE INTERIOR
U.S. GEOLOGICAL SURVEY



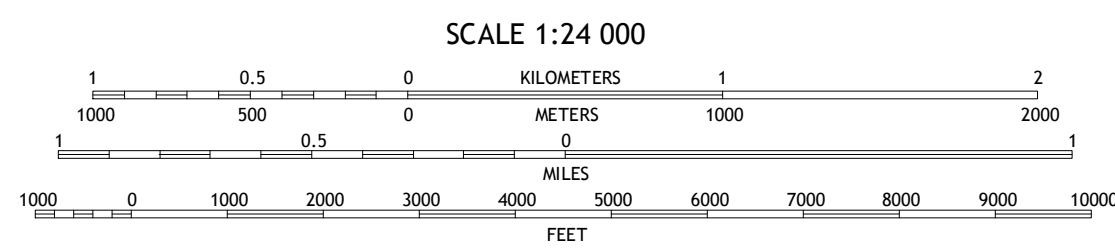
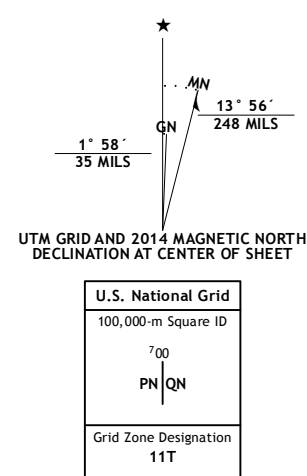
DIXON QUADRANGLE
MONTANA
7.5-MINUTE SERIES



Produced by the United States Geological Survey
North American Datum of 1983 (NAD83)
World Geodetic System of 1984 (WGS84). Projection and
1:000-meter grid: Universal Transverse Mercator, Zone 11T
10 000-foot ticks: Montana Coordinate System of 1983

This map is not a legal document. Boundaries may be
generalized for this map scale. Private lands within government
reservations may not be shown. Obtain permission before
entering private lands.

Imagery.....NAIP, July 2011 - August 2011
Roads.....HERE, ©2013
Names.....GNIS, 2013
Hydrography.....National Hydrography Dataset, 2011
Contours.....National Elevation Dataset, 2002
Boundaries.....Multiple sources; see metadata file 1972 - 2013
Public Land Survey System.....BLM, 2011



ROAD CLASSIFICATION

Expressway	707	Local Connector
Secondary Hwy	—	Local Road
Ramp	—	4WD
Interstate Route	—	US Route
	—	State Route

ADJOINING QUADRANGLES

1	2	3
4	5	
6	7	8

1 Melton Ranch
2 Sloan
3 Charlo
4 McDonald
5 Ravalli
6 McCormick Peak
7 Hewoff Mountain
8 Saddle Mountain

DIXON, MT
2014

