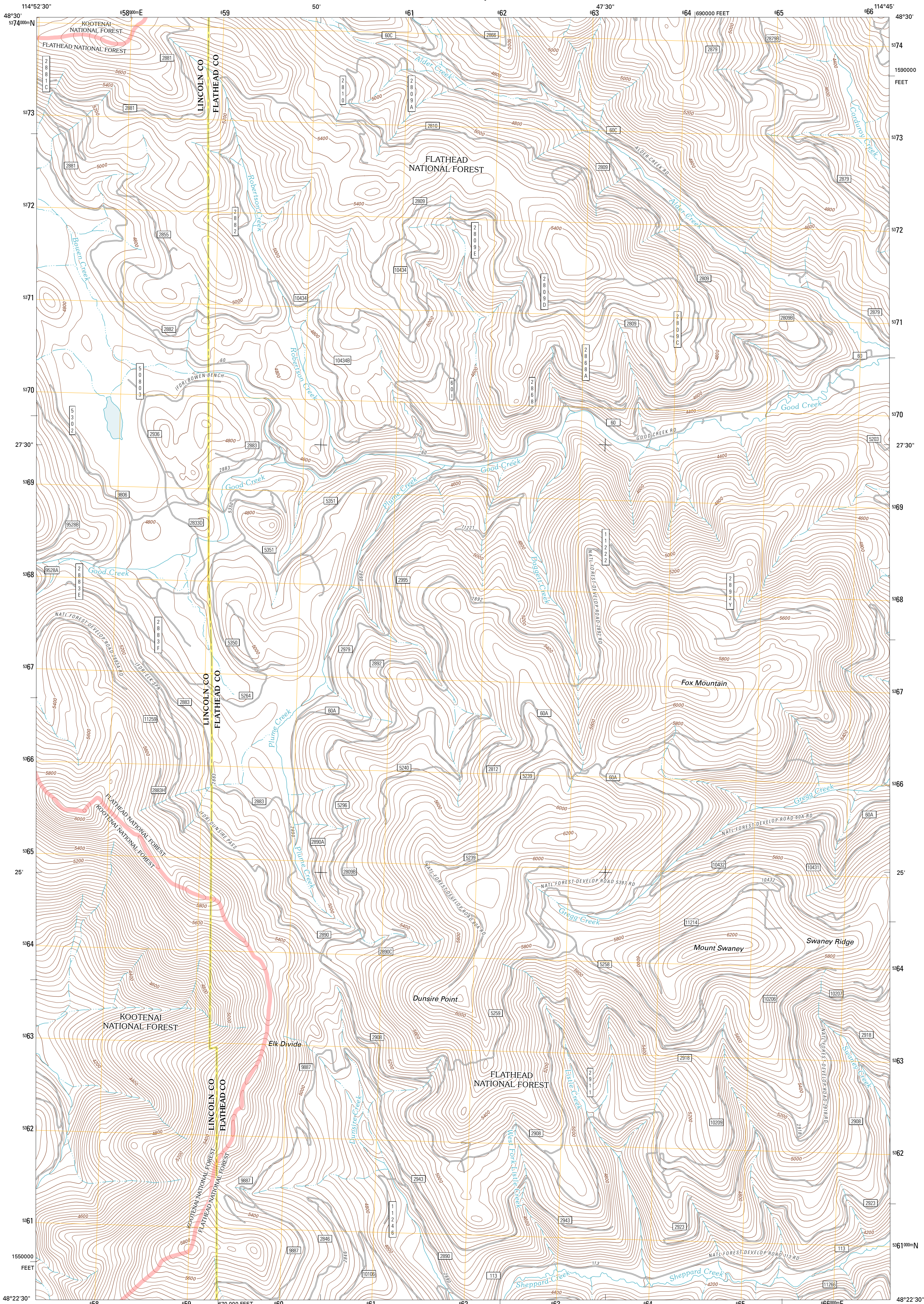




U.S. DEPARTMENT OF THE INTERIOR
U. S. GEOLOGICAL SURVEY

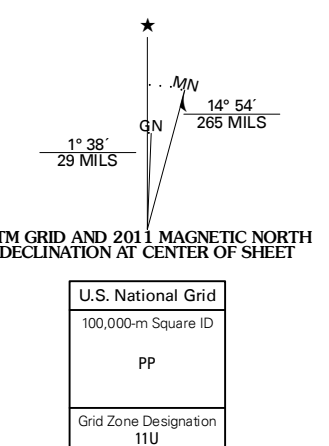


DUNSIRE POINT QUADRANGLE
MONTANA
7.5-MINUTE SERIES



Produced by the United States Geological Survey
North American Datum of 1983 (NAD83)
World Geodetic System of 1984 (WGS84). Projection and
1 000-meter grid: Universal Transverse Mercator, Zone 11U
10 000-foot ticks: Montana Coordinate System of 1983

Imagery: NADP, July 2009
Roads: ©2006-2010 Tele Atlas
Roads within US Forest Service Lands: FSTopo Data
with limited Forest Service updates, 2009
Names: ©2006-2010 Tele Atlas
Hydrography: National Hydrography Dataset, 2009
Contours: National Elevation Dataset, 2005
Boundaries: Census, IBWC, IBC, USGS, 1972 - 2010



CONTOUR INTERVAL 40 FEET
NORTH AMERICAN VERTICAL DATUM OF 1988
This map was produced to conform with version 0.5.10
of the USGS US Topo Product Standard.
A metadata file associated with this product is draft version 0.5.16

ROAD CLASSIFICATION

| | |
|------------------|-------------|
| Interstate Route | State Route |
| US Route | Local Road |
| Ramp | 4WD |

QUADRANGLE LOCATION

| | | |
|------------------|-----------------|-----------------|
| Skillet Mountain | Sunday Mountain | Rudhor |
| Brown Lake | Dunsire Point | Johnson Peak |
| Horse Hill | Sylvia Lake | Ashley Mountain |

Check with local Forest Service unit for current travel conditions and restrictions.

DUNSIRE POINT, MT
2011

ADJOINING 7.5' QUADRANGLES