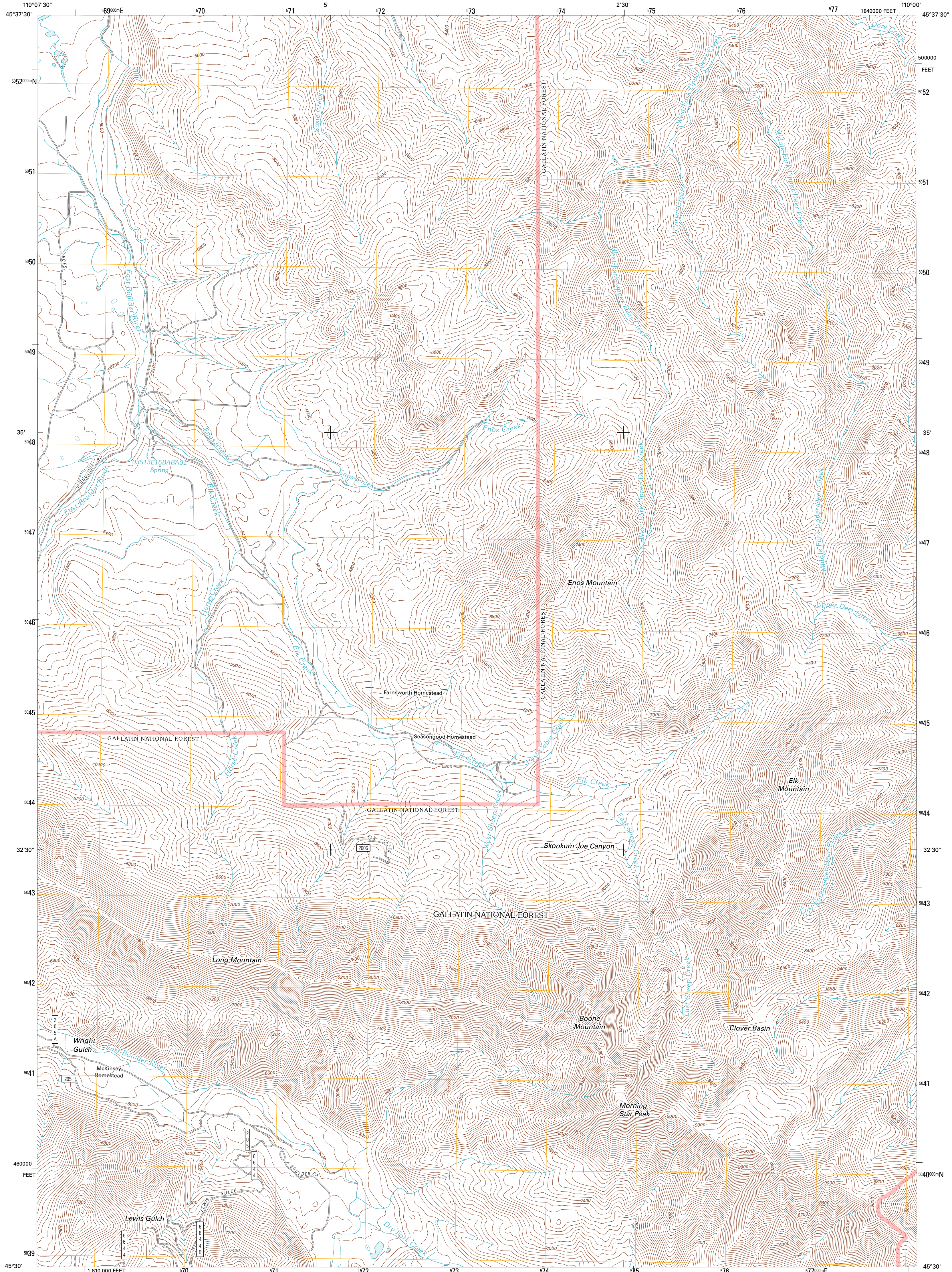




U.S. DEPARTMENT OF THE INTERIOR
U. S. GEOLOGICAL SURVEY

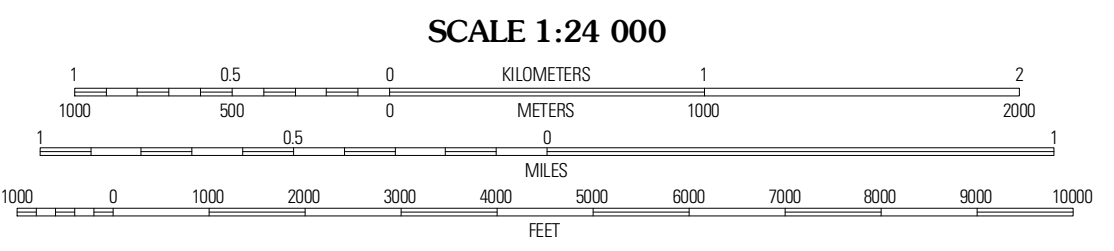
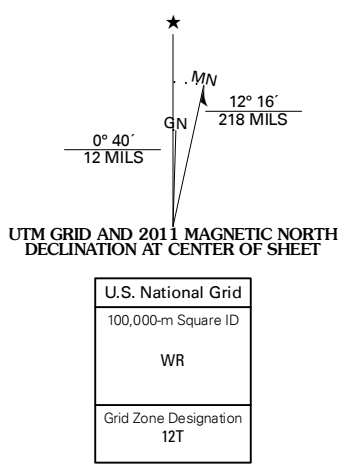


ENOS MOUNTAIN QUADRANGLE
MONTANA-SWEET GRASS CO.
7.5-MINUTE SERIES



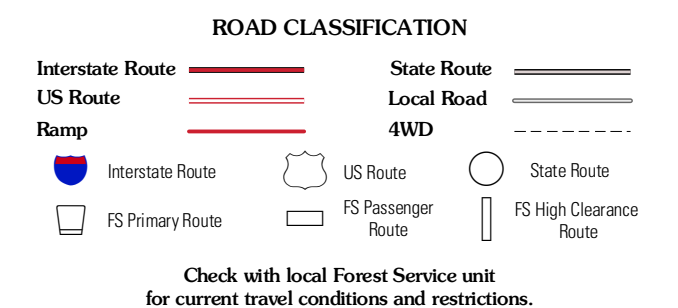
Produced by the United States Geological Survey
North American Datum of 1983 (NAD83)
World Geodetic System of 1984 (WGS84). Projection and
1 000-meter grid: Universal Transverse Mercator, Zone 12T
10 000-foot ticks: Montana Coordinate System of 1983

Imagery.....NAMP, July 2009
Roads.....62006-2010 Tele Atlas
Roads within US Forest Service Lands.....FS Topo Data
with limited Forest Service updates, 2009
Names.....GNIS, 2010
Hydrography.....National Hydrography Dataset, 2009
Contours.....National Elevation Dataset, 2001
Boundaries.....Census, IBWC, IBC, USGS, 1972 - 2010



Springdale	McLeod	Ross Canyon
McLeod Basin	Enos Mountain	Silvercreek Mountain
Chrome Mountain	Picket Pin Mountain	Meyer Mountain

ADJOINING 7.5 QUADRANGLES



ENOS MOUNTAIN, MT
2011