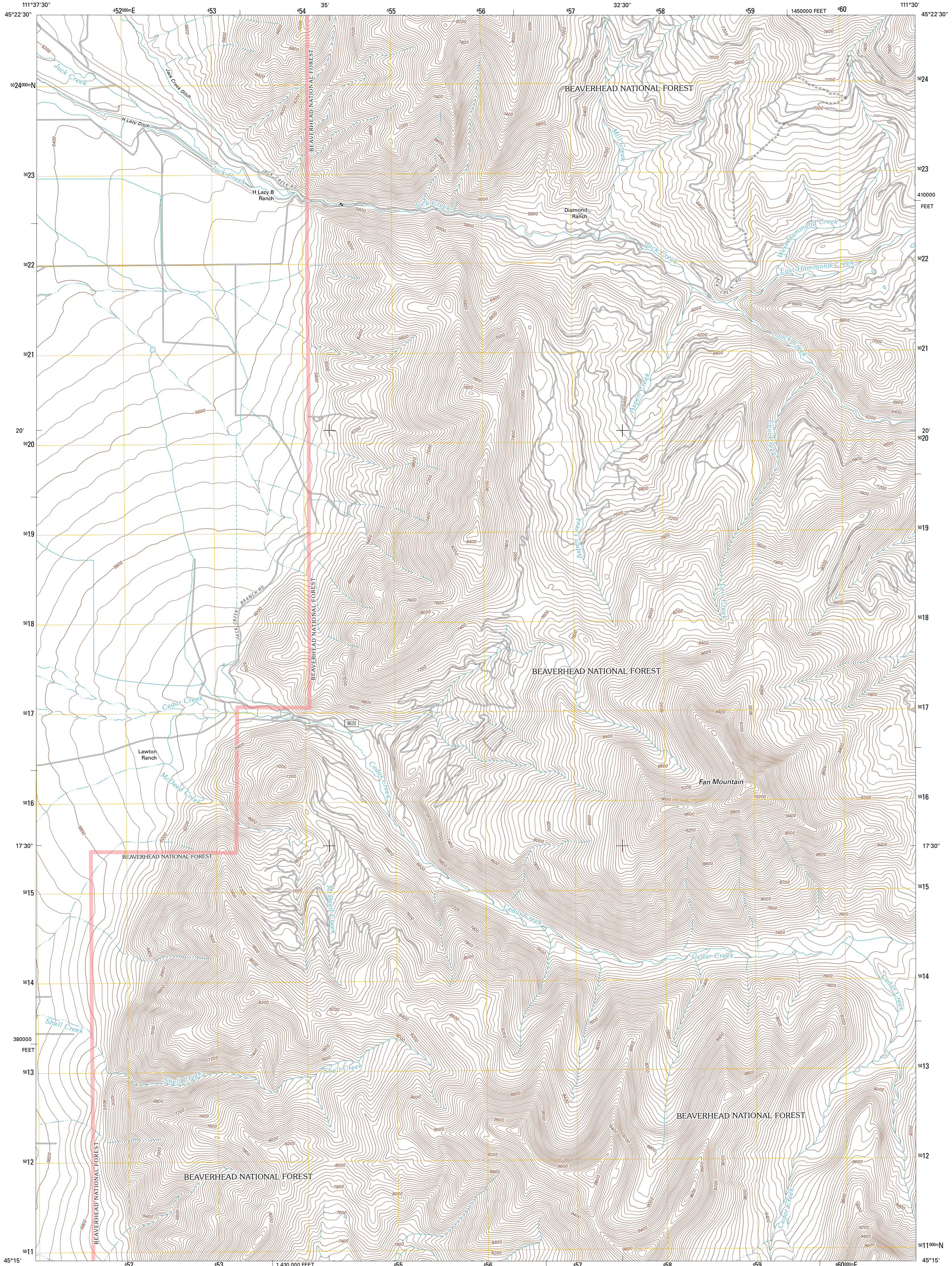




U.S. DEPARTMENT OF THE INTERIOR  
U. S. GEOLOGICAL SURVEY

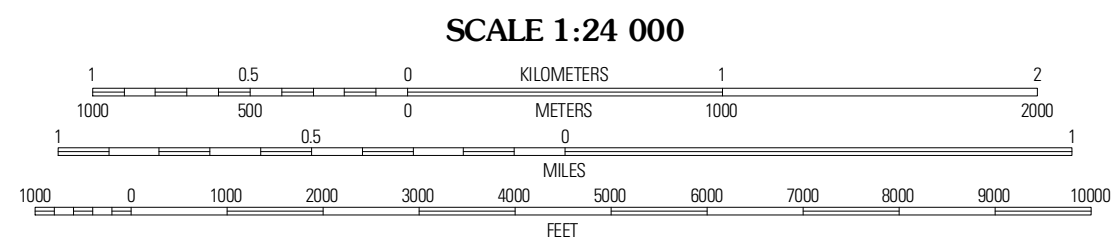
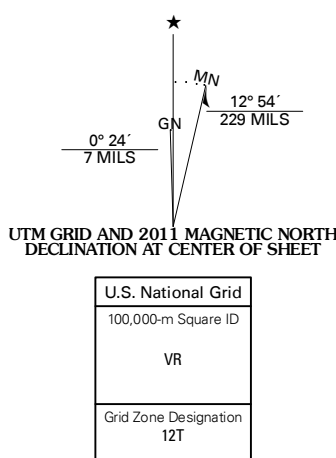


FAN MOUNTAIN QUADRANGLE  
MONTANA-MADISON CO.  
7.5-MINUTE SERIES



Produced by the United States Geological Survey  
North American Datum of 1983 (NAD83)  
World Geodetic System of 1984 (WGS84). Projection and  
1 000-meter grid: Universal Transverse Mercator, Zone 12T  
10 000-foot ticks: Montana Coordinate System of 1983

Imagery: NAD, July 2009  
Roads: 2006-2010 Tele Atlas  
Roads within US Forest Service Lands: FSTopo Data  
with limited Forest Service updates, 2009  
Names: GNIS, 2010  
Hydrography: National Hydrography Dataset, 2009  
Contours: National Elevation Dataset, 2001  
Boundaries: Census, IBWC, IBC, USGS, 1972 - 2010

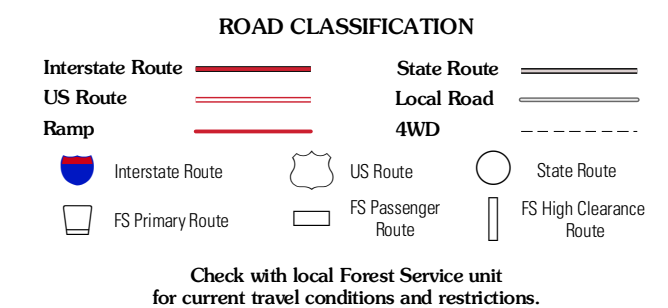


This map was produced to conform with version 0.5.10  
of the USGS US Topo Product Standard.  
A metadata file associated with this product is draft version 0.5.16



QUADRANGLE LOCATION

Ernie Lake	Cherry Lake	Willow Swamp
Ernie	Fan Mountain	Lone Mountain
Cameron	Lake Cameron	Sphinx Mountain



Check with local Forest Service unit  
for current travel conditions and restrictions.

FAN MOUNTAIN, MT  
2011

ADJOINING 7.5 QUADRANGLES