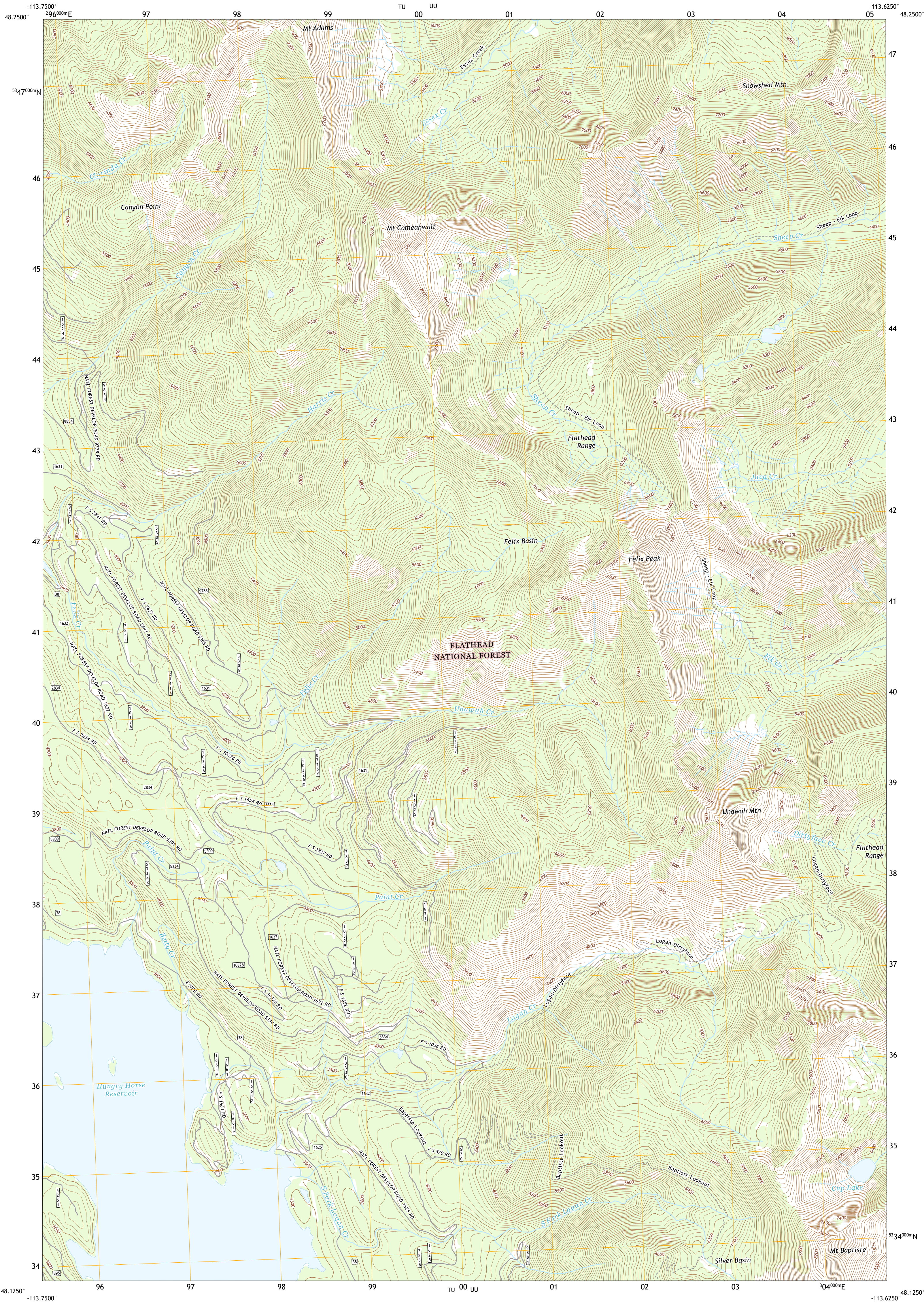




U.S. DEPARTMENT OF THE INTERIOR
U.S. GEOLOGICAL SURVEY



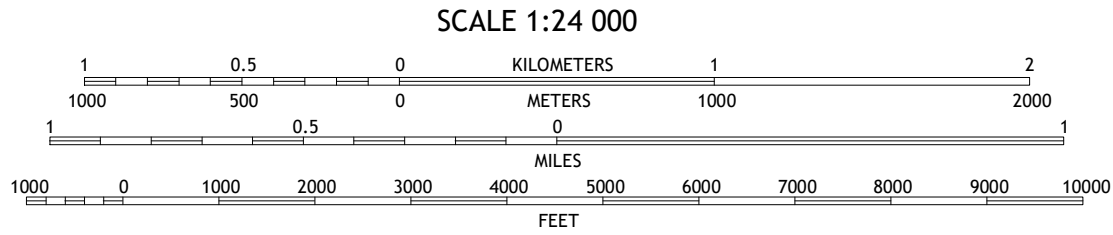
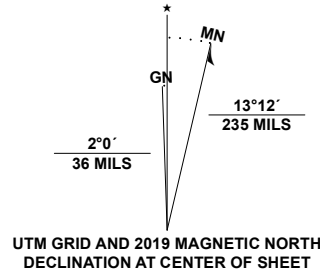
FELIX PEAK QUADRANGLE
MONTANA - FLATHEAD COUNTY
7.5-MINUTE SERIES



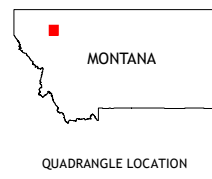
Produced by the United States Geological Survey

North American Datum of 1983 (NAD83)
World Geodetic System of 1984 (WGS84), Projection and
1 000-meter grid-Universal Transverse Mercator, Zone 12U
This map is not a legal document. Boundaries may be
generalized for this map scale. Private lands within government
reservations may not be shown. Obtain permission before
entering private lands.

Imagery.....NAIP, Not Available
Roads.....U.S. Census Bureau, Not Available
Roads within US Forest Service Lands.....FSTopo Data
with limited Forest Service updates, 2013
Names.....Multiple sources; see metadata
Hydrography.....National Hydrography Dataset, 1999 - 2019
Contours.....National Elevation Dataset, 2001
Boundaries.....Multiple sources; see metadata
Public Land Survey System.....BLM, 2018
Wetlands.....FWS National Wetlands Inventory Not Available



CONTOUR INTERVAL 40 FEET
NORTH AMERICAN VERTICAL DATUM OF 1988
This map was produced to conform with the
National Geospatial Program US Topo Product Standard, 2011.
A metadata file associated with this product is draft version 0.6.18



| | | |
|---|---|---|
| 1 | 2 | 3 |
| 4 | 5 | 6 |
| 7 | 8 | 9 |

ADJOINING QUADRANGLES

1 Mount Grant
2 Pinnacle
3 Essex
4 Pioneer Ridge
5 Nimrod
6 Big Hawk Mountain
7 Quintonkon
8 Circus Peak

| ROAD CLASSIFICATION | |
|---------------------|-------------------------|
| Expressway | Local Connector |
| Secondary Hwy | Local Road |
| Ramp | 4WD |
| Interstate Route | US Route |
| FS Primary Route | FS Passenger Route |
| | FS High Clearance Route |

Check with local Forest Service unit
for current travel conditions and restrictions.

FELIX PEAK, MT
2020

