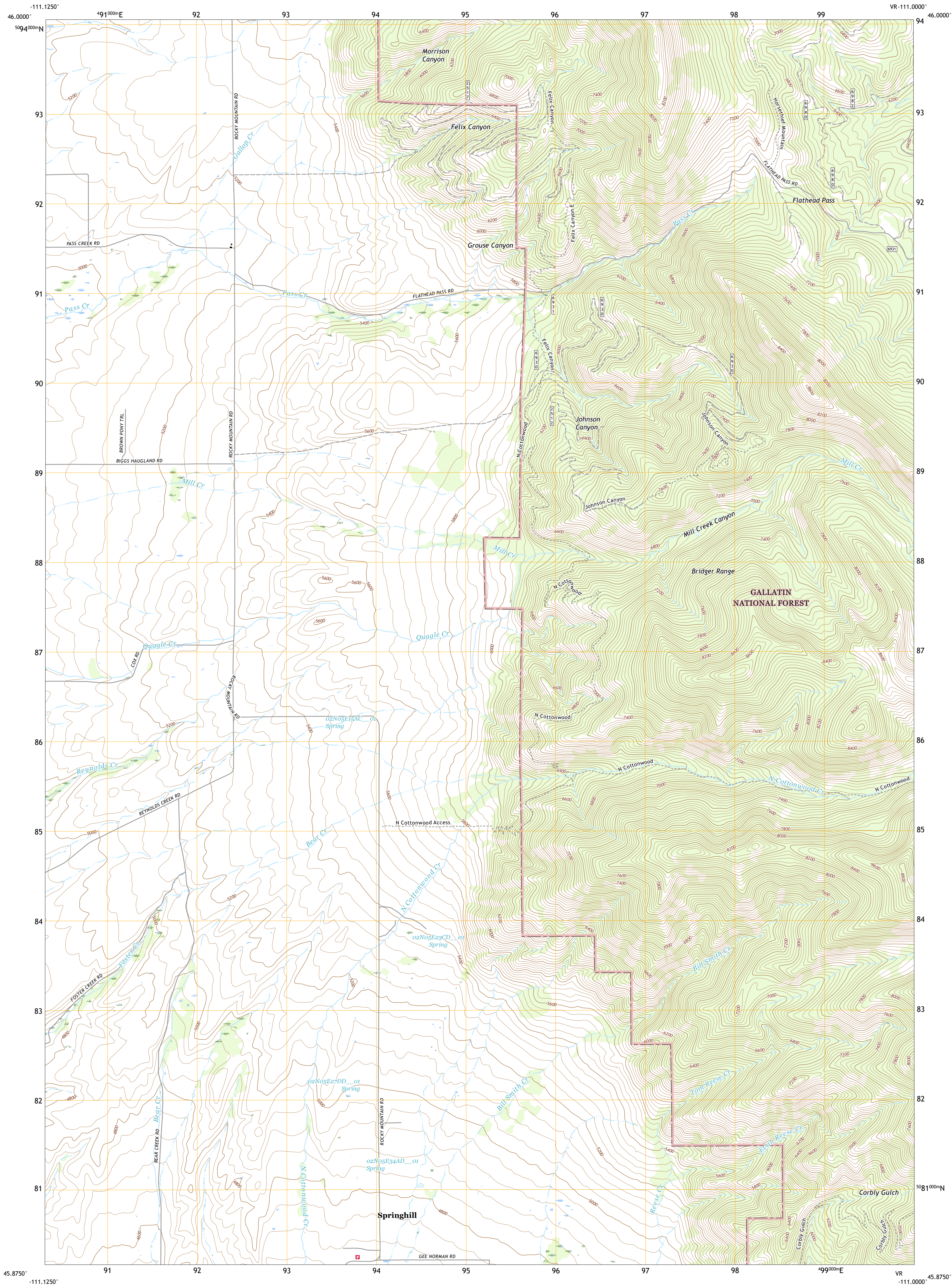




U.S. DEPARTMENT OF THE INTERIOR  
U.S. GEOLOGICAL SURVEY



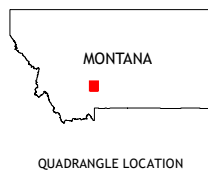
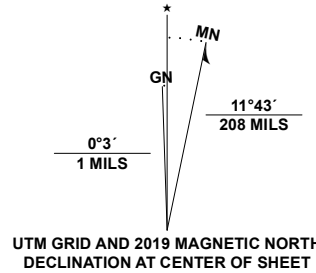
FLATHEAD PASS QUADRANGLE  
MONTANA - GALLATIN COUNTY  
7.5-MINUTE SERIES



Produced by the United States Geological Survey

North American Datum of 1983 (NAD83)  
World Geodetic System of 1984 (WGS84). Projection and  
1 000-meter grid/Universal Transverse Mercator, Zone 12T  
This map is not a legal document. Boundaries may be  
generalized for this map scale. Private lands within government  
reservations may not be shown. Obtain permission before  
entering private lands.

Imagery.....NAIP, August 2015 - November 2015  
Roads.....U.S. Census Bureau, 2016  
Roads within US Forest Service Lands.....FS Topo Data  
with limited Forest Service updates, 2013 - 2017  
Names.....GNIS, 1980 - 2020  
Hydrography.....National Hydrography Dataset, 2002 - 2019  
Contours.....National Elevation Dataset, 2005  
Boundaries.....Multiple sources; see metadata file, 2018 - 2019  
Public Land Survey System.....BLM, 2018  
Wetlands.....FWS National Wetlands Inventory 2005 - 2006



1	2	3
4	5	6
7	8	9

- 1 Maudlow
- 2 Blacktail Mountain
- 3 Hatfield Mountain
- 4 Horseshoe Creek
- 5 Sacagwea Peak
- 6 Belgrade
- 7 Miser Creek
- 8 Saddle Peak

ROAD CLASSIFICATION	
Expressway	Local Connector
Secondary Hwy	Local Road
Interstate Route	4WD
FS Primary Route	US Route
FS Passenger Route	State Route
FS High Clearance Route	FS High Clearance Route

Check with local Forest Service unit  
for current travel conditions and restrictions.

FLATHEAD PASS, MT  
2020

