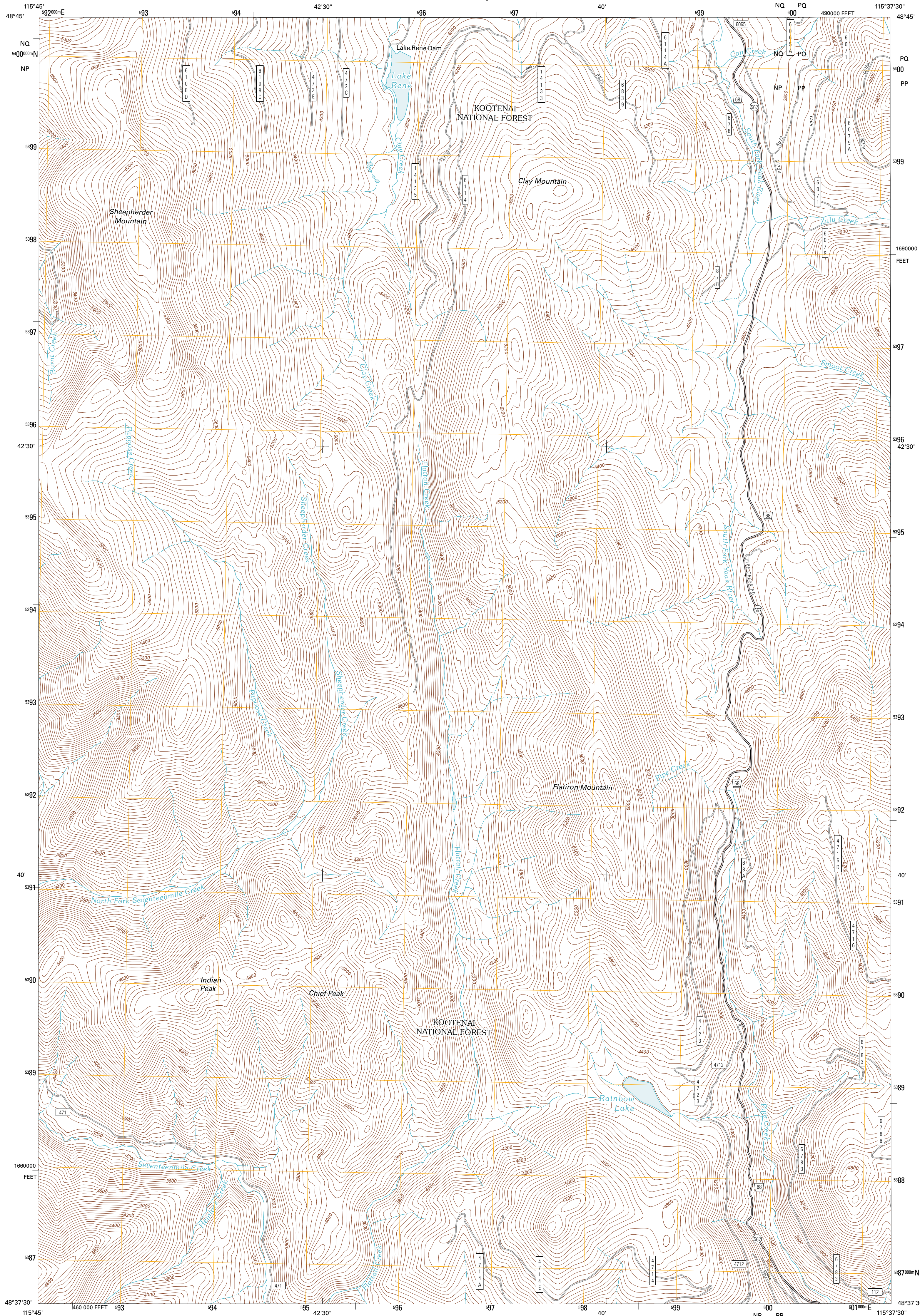




U.S. DEPARTMENT OF THE INTERIOR
U. S. GEOLOGICAL SURVEY

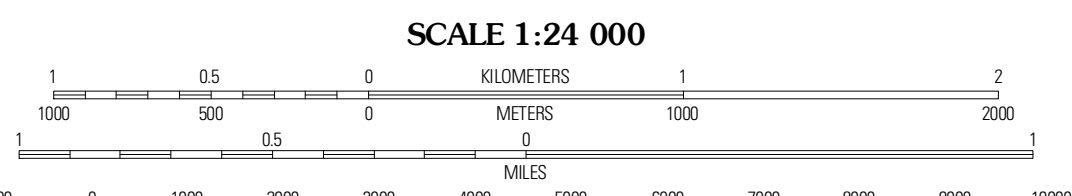
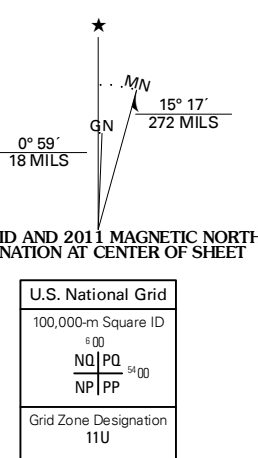


FLATIRON MOUNTAIN QUADRANGLE
MONTANA-LINCOLN CO.
7.5-MINUTE SERIES



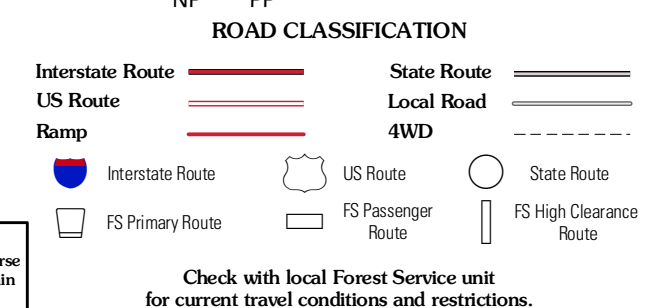
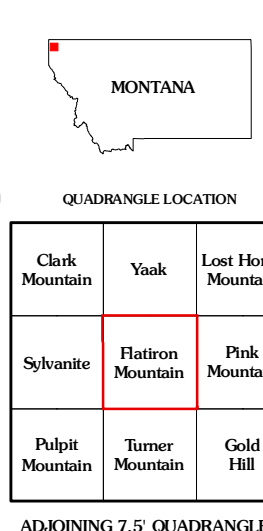
Produced by the United States Geological Survey
North American Datum of 1983 (NAD83)
World Geodetic System of 1984 (WGS84). Projection and
1 000 meter grid. Universal Transverse Mercator, Zone 11U
10 000-foot ticks: Montana Coordinate System of 1983

Imagery: NAIP, July 2009 - August 2009
Roads: 2006-2010 Tele Atlas
Roads within US Forest Service Lands: FSTopo Data
with limited Forest Service updates, 2009
Names: 2010 National Hydrography Dataset, 2010
Hydrography: 2010 National Hydrography Dataset, 2009
Contours: 2006 National Elevation Dataset, 2006
Boundaries: Census, IBWC, IBC, USGS, 1972 - 2010



CONTOUR INTERVAL 40 FEET
NORTH AMERICAN VERTICAL DATUM OF 1988

This map was produced to conform with version 0.5.10
of the USGS US Topo Product Standard.
A metadata file associated with this product is draft version 0.5.16



Check with local Forest Service unit
for current travel conditions and restrictions.

FLATIRON MOUNTAIN, MT
2011