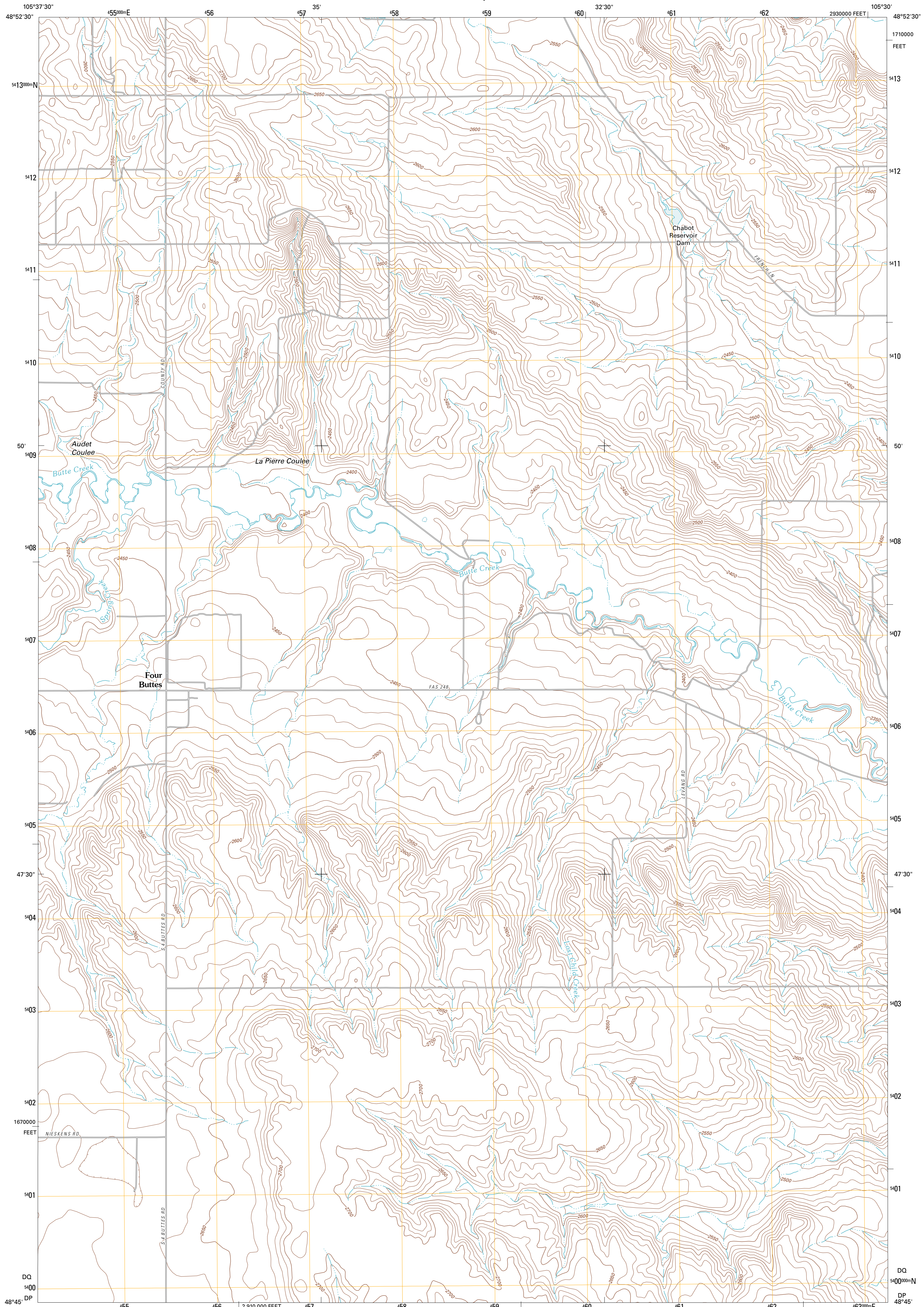




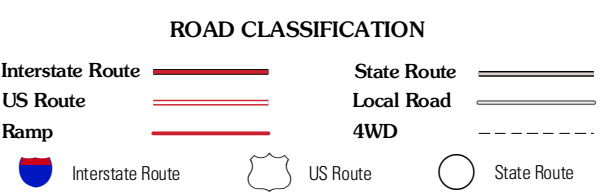
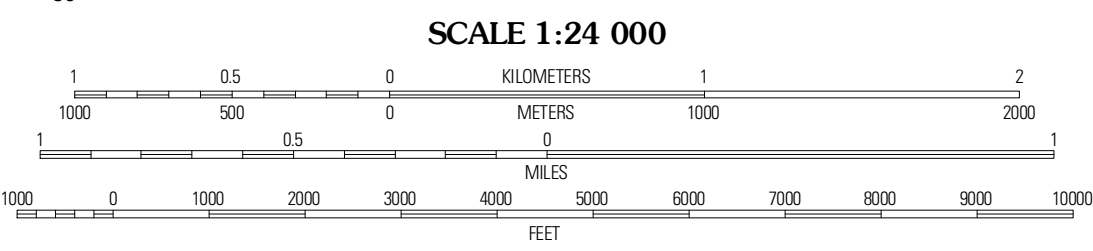
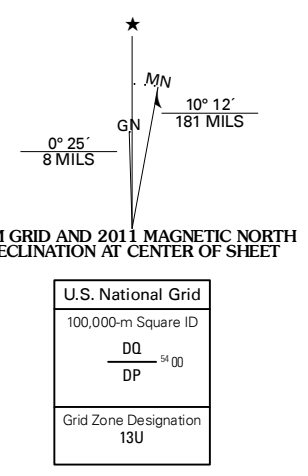
U.S. DEPARTMENT OF THE INTERIOR
U. S. GEOLOGICAL SURVEY



FOUR BUTTES QUADRANGLE
MONTANA-DANIELS CO.
7.5-MINUTE SERIES



Produced by the United States Geological Survey
North American Datum of 1983 (NAD83)
World Geodetic System of 1984 (WGS84). Projection and
1 000-meter grid: Universal Transverse Mercator, Zone 13U
10 000-foot ticks: Montana Coordinate System of 1983



Imagery.....NAIP, July 2009
Roads.....©2006-2010 Tele Atlas
Names.....National Geographic, GNS, 2010
Hydrography.....National Hydrography Dataset, 2009
Contours.....National Elevation Dataset, 2008
Boundaries.....Census, IBWC, IBC, USGS, 1972 - 2010

Four Buttes NW	Four Buttes NE	Scobey NW
Killebuck Reservoir	Four Buttes	Scobey
Shipstead Coulee	South of Four Buttes	Chabert Coulee

CONTOUR INTERVAL 10 FEET
NORTH AMERICAN VERTICAL DATUM OF 1988

This map was produced to conform with version 0.5.10
of the USGS US Topo Product Standard.
A metadata file associated with this product is draft version 0.5.16

ADJOINING 7.5 QUADRANGLES

Four Buttes NW	Four Buttes NE	Scobey NW
Killebuck Reservoir	Four Buttes	Scobey
Shipstead Coulee	South of Four Buttes	Chabert Coulee

FOUR BUTTES, MT
2011