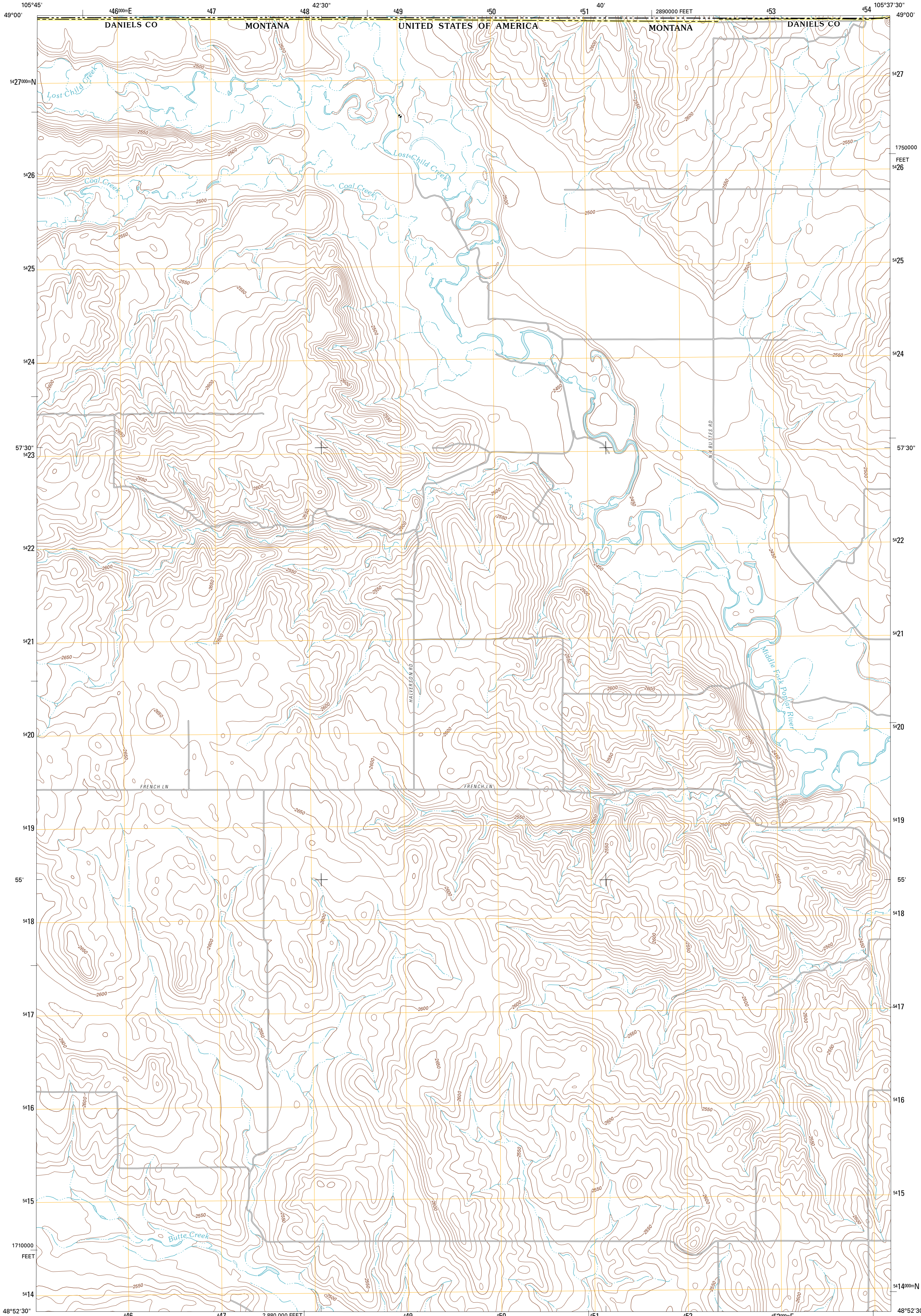




U.S. DEPARTMENT OF THE INTERIOR
U. S. GEOLOGICAL SURVEY

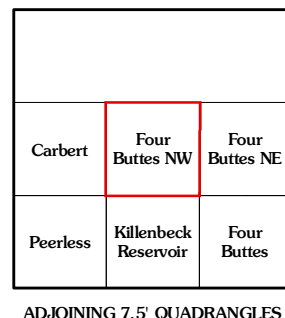
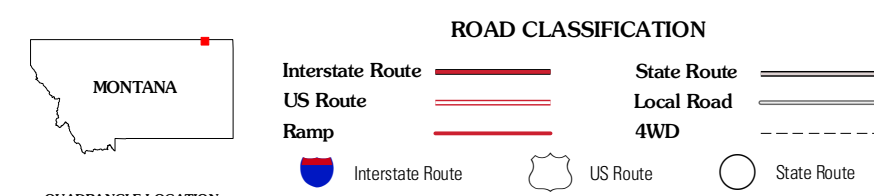
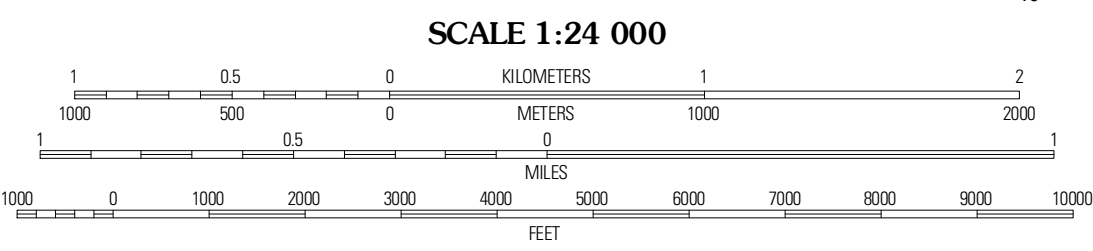
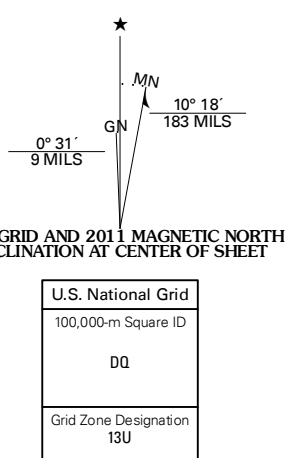


FOUR BUTTES NW QUADRANGLE
MONTANA-SASKATCHEWAN
7.5-MINUTE SERIES



Produced by the United States Geological Survey
North American Datum of 1983 (NAD83)
World Geodetic System of 1984 (WGS84). Projection and
1 000-meter grid: Universal Transverse Mercator, Zone 13U
10 000-foot ticks: Montana Coordinate System of 1983

Imagery.....NAP, July 2009
Roads.....©2006-2010 Tele Atlas
Names.....GNS, 2010
Hydrography.....National Hydrography Dataset, 2009
Contours.....National Elevation Dataset, 2008
Boundaries.....Census, IBWC, IBC, USGS, 1972 - 2010



FOUR BUTTES NW, MT-SK
2011

This map was produced to conform with version 0.5.10 of the USGS US Topo Product Standard. A metadata file associated with this product is draft version 0.5.16