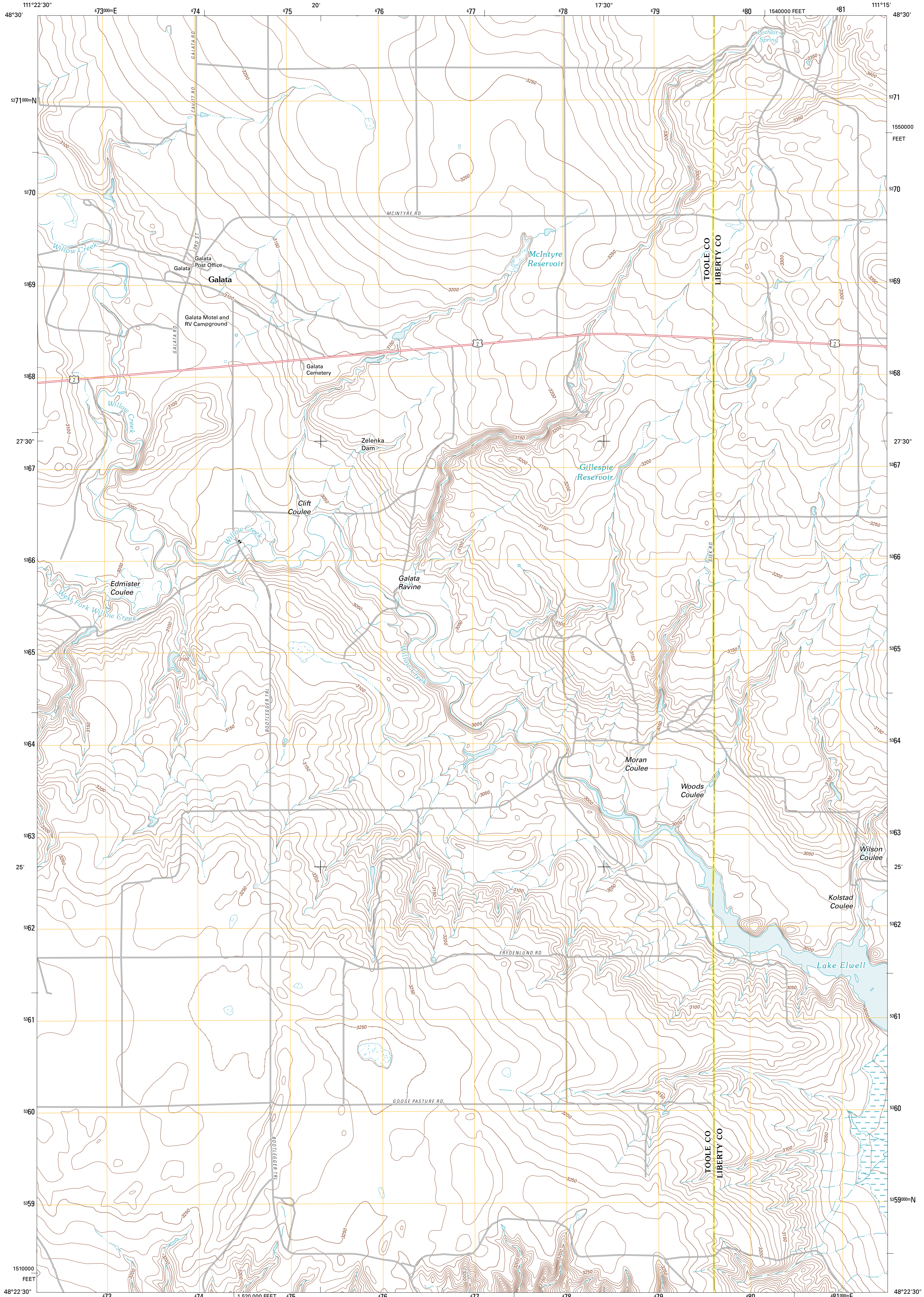




U.S. DEPARTMENT OF THE INTERIOR
U. S. GEOLOGICAL SURVEY

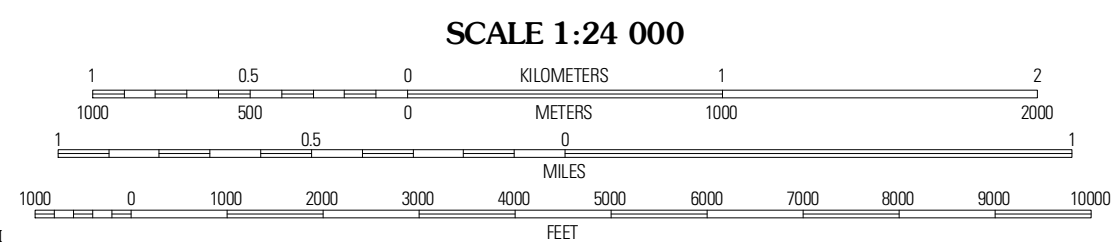
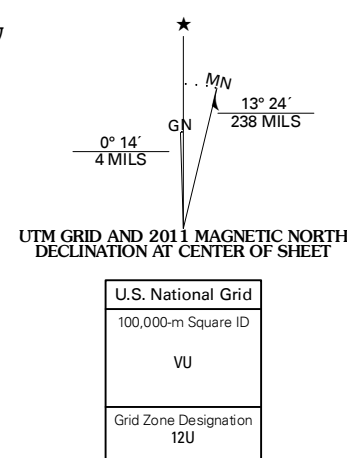


GALATA QUADRANGLE
MONTANA
7.5-MINUTE SERIES



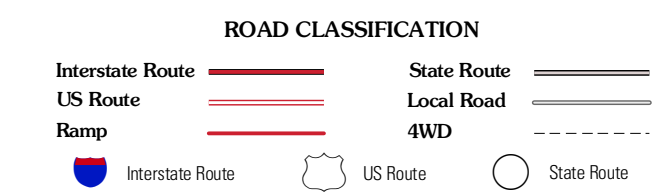
Produced by the United States Geological Survey
North American Datum of 1983 (NAD83)
World Geodetic System of 1984 (WGS84). Projection and
1 000-meter grid: Universal Transverse Mercator, Zone 12U
10 000-foot ticks: Montana Coordinate System of 1983

Imagery.....NAIP, August 2009
Roads.....©2006-2010 Tele Atlas
Names.....©2010
Hydrography.....National Hydrography Dataset, 2009
Contours.....National Elevation Dataset, 2008
Boundaries.....Census, IBWC, IBC, USGS, 1972 - 2010



QUADRANGLE LOCATION

McCarters Lake	McCarters Lake SE	North Lothair School
Devon	Galata	Lothair
Denson Ranch	Pondera School	Lothair SW



CONTOUR INTERVAL 10 FEET
NORTH AMERICAN VERTICAL DATUM OF 1988

This map was produced to conform with version 0.5.10
of the USGS US Topo Product Standard.
A metadata file associated with this product is draft version 0.5.16

GALATA, MT
2011

ADJOINING 7.5 QUADRANGLES