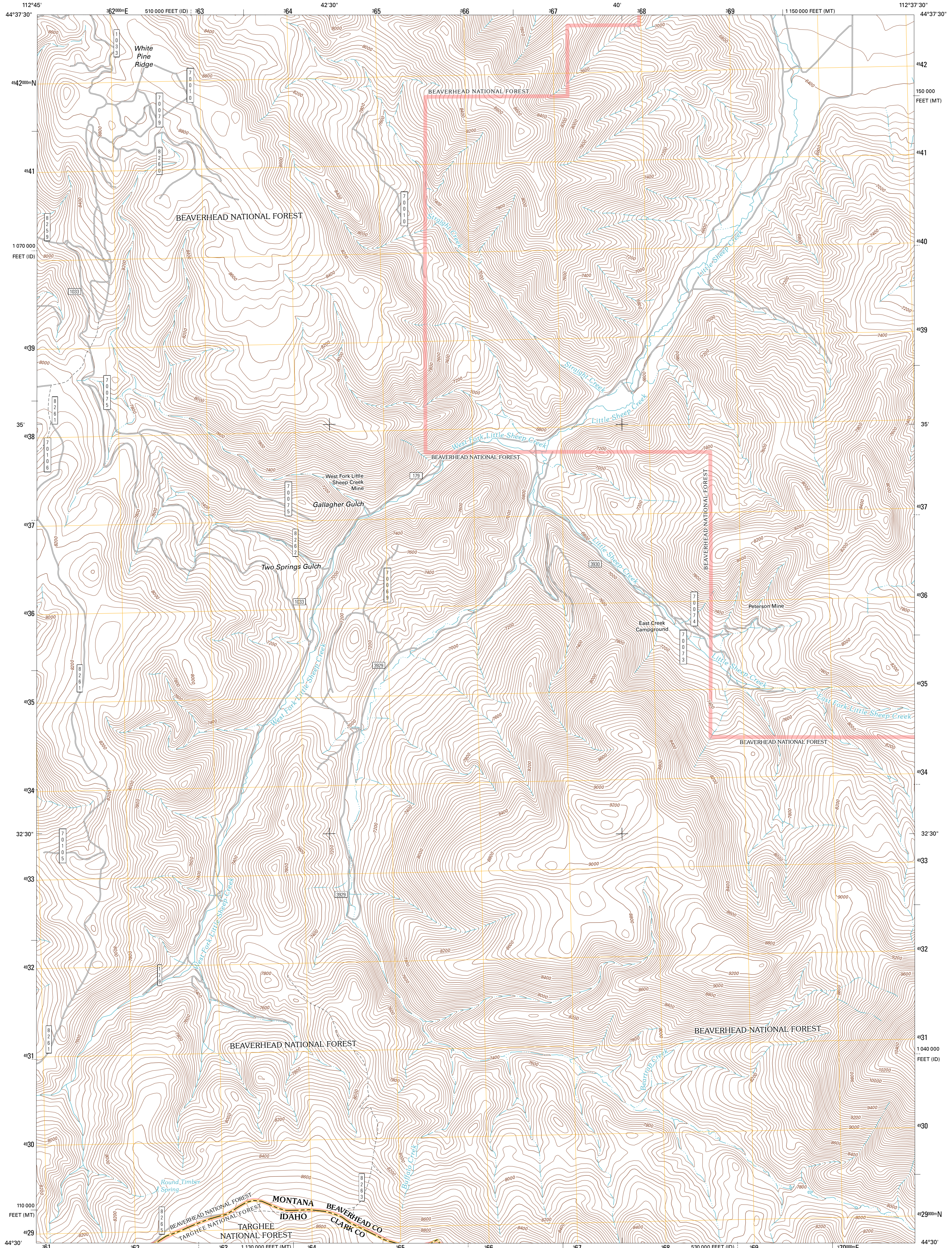




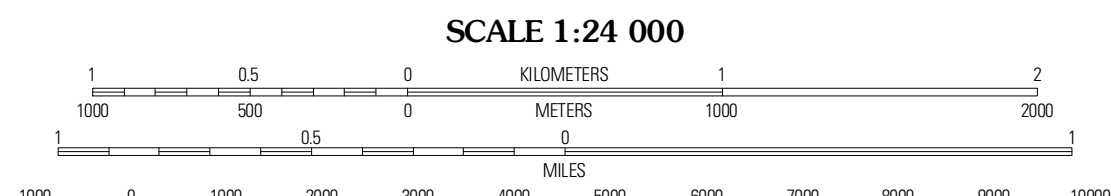
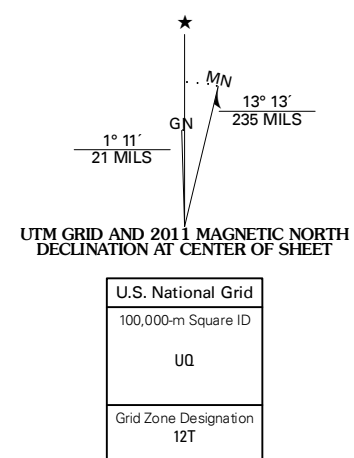
U.S. DEPARTMENT OF THE INTERIOR  
U. S. GEOLOGICAL SURVEY



GALLAGHER GULCH QUADRANGLE  
MONTANA-IDAHO  
7.5-MINUTE SERIES

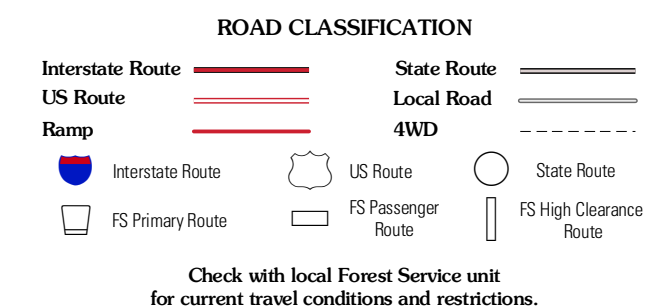


Produced by the United States Geological Survey  
North American Datum of 1983 (NAD83)  
World Geodetic System of 1984 (WGS84). Projection and  
1 000-meter grid: Universal Transverse Mercator, Zone 12T  
10 000-foot ticks: Montana Coordinate System of 1983,  
Idaho Coordinate System of 1983 (east zone)



QUADRANGLE LOCATION

Dixon Mountain	Dell	Lima
Caboose Canyon	Gallagher Gulch	Lima Peaks
Deedman Lake	Fritz Peak	Edie Creek



Imagery: NADP, July 2009  
Roads: 1:25000-2010 Tele Atlas  
Roads within US Forest Service Lands: FSTopo Data with limited Forest Service updates, 2009  
Names: GNIS, 2010  
Hydrography: National Hydrography Dataset, 2009  
Contours: National Elevation Dataset, 2002  
Boundaries: Census, IBWC, IBC, USGS, 1972 - 2010

CONTOUR INTERVAL 40 FEET  
NORTH AMERICAN VERTICAL DATUM OF 1988  
This map was produced to conform with version 0.5.10 of the USGS US Topo Product Standard.  
A metadata file associated with this product is draft version 0.5.16

GALLAGHER GULCH, MT-ID  
2011