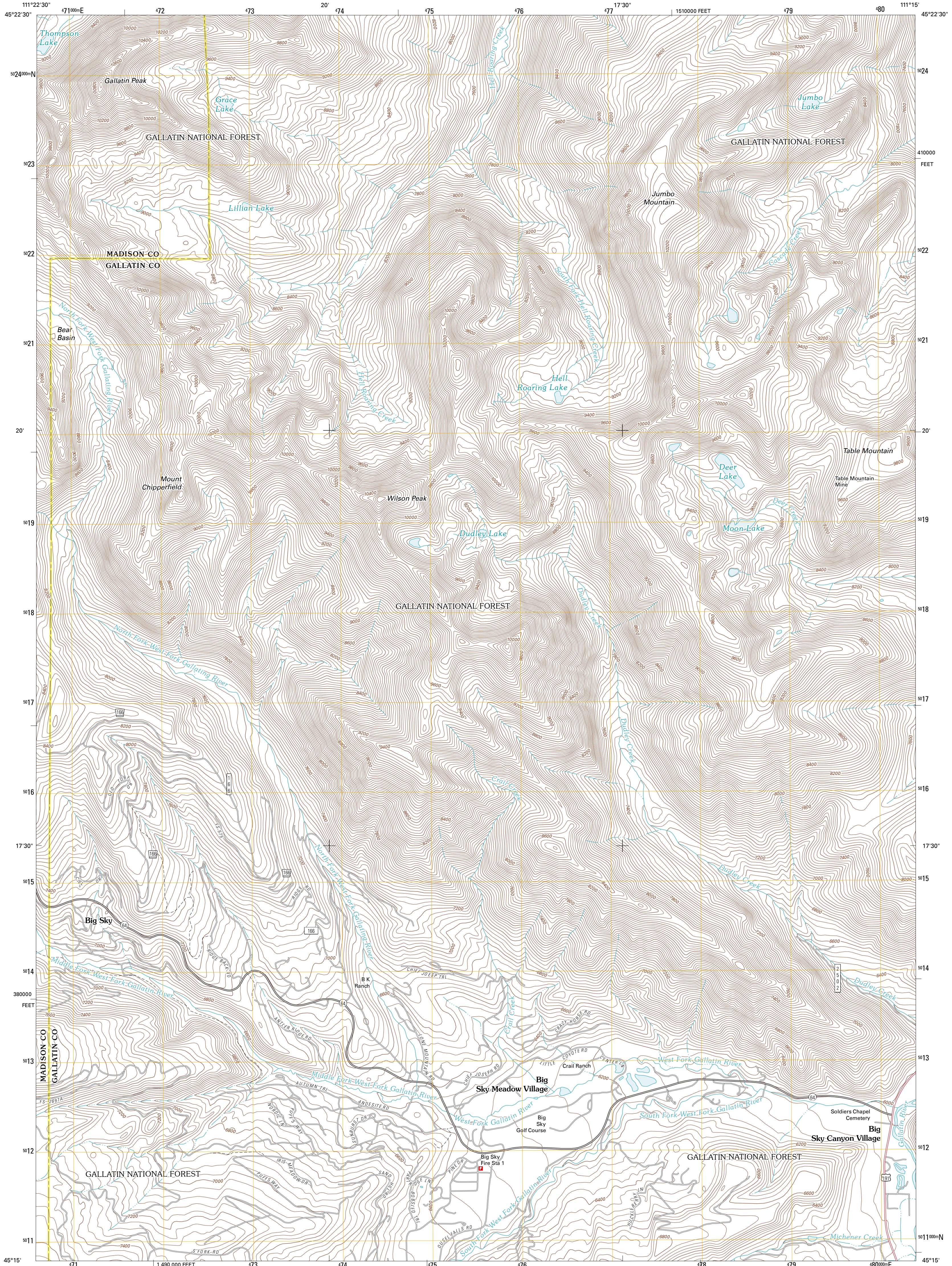




U.S. DEPARTMENT OF THE INTERIOR
U. S. GEOLOGICAL SURVEY

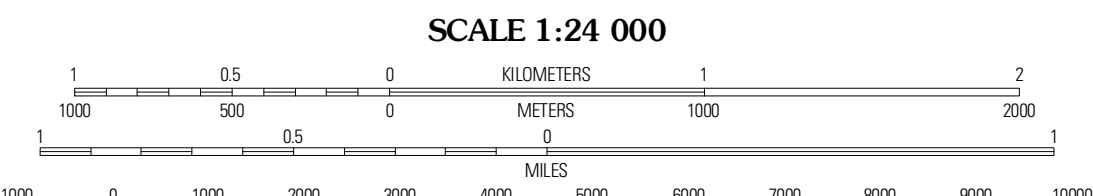
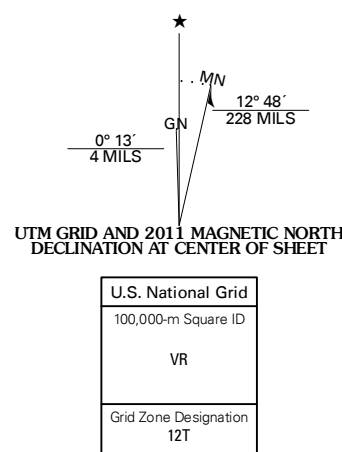


GALLATIN PEAK QUADRANGLE
MONTANA
7.5-MINUTE SERIES



Produced by the United States Geological Survey
North American Datum of 1983 (NAD83)
World Geodetic System of 1984 (WGS84). Projection and
1 000 meter grid: Universal Transverse Mercator, Zone 12T
10 000-foot ticks: Montana Coordinate System of 1983

Imagery: NAD, June 2009
Roads: ©2006-2010 Tele Atlas
Roads within US Forest Service Lands: FSTopo Data
with limited Forest Service updates, 2009
Names: National Hydrography Dataset, 2009
Contours: National Elevation Dataset, 2001
Boundaries: Census, IBWC, IBC, USGS, 1972 - 2010



CONTOUR INTERVAL 40 FEET
NORTH AMERICAN VERTICAL DATUM OF 1988
This map was produced to conform with version 0.5.10
of the USGS US Topo Product Standard.
A metadata file associated with this product is draft version 0.5.16

ROAD CLASSIFICATION

| | | | |
|--|-------------------------|--|--------------------|
| | Interstate Route | | State Route |
| | US Route | | Local Road |
| | Ramp | | 4WD |
| | Interstate Route | | US Route |
| | FS Primary Route | | FS Passenger Route |
| | FS High Clearance Route | | State Route |

Check with local Forest Service unit for current travel conditions and restrictions.

QUADRANGLE LOCATION

| | | |
|-----------------|---------------|------------------|
| Willow Swamp | Bacon Point | Garnet Mountain |
| Lone Mountain | Gallatin Peak | Hidden Lakes |
| Sphinx Mountain | Ousel Falls | Lone Indian Peak |

GALLATIN PEAK, MT
2011

ADJOINING 7.5' QUADRANGLES