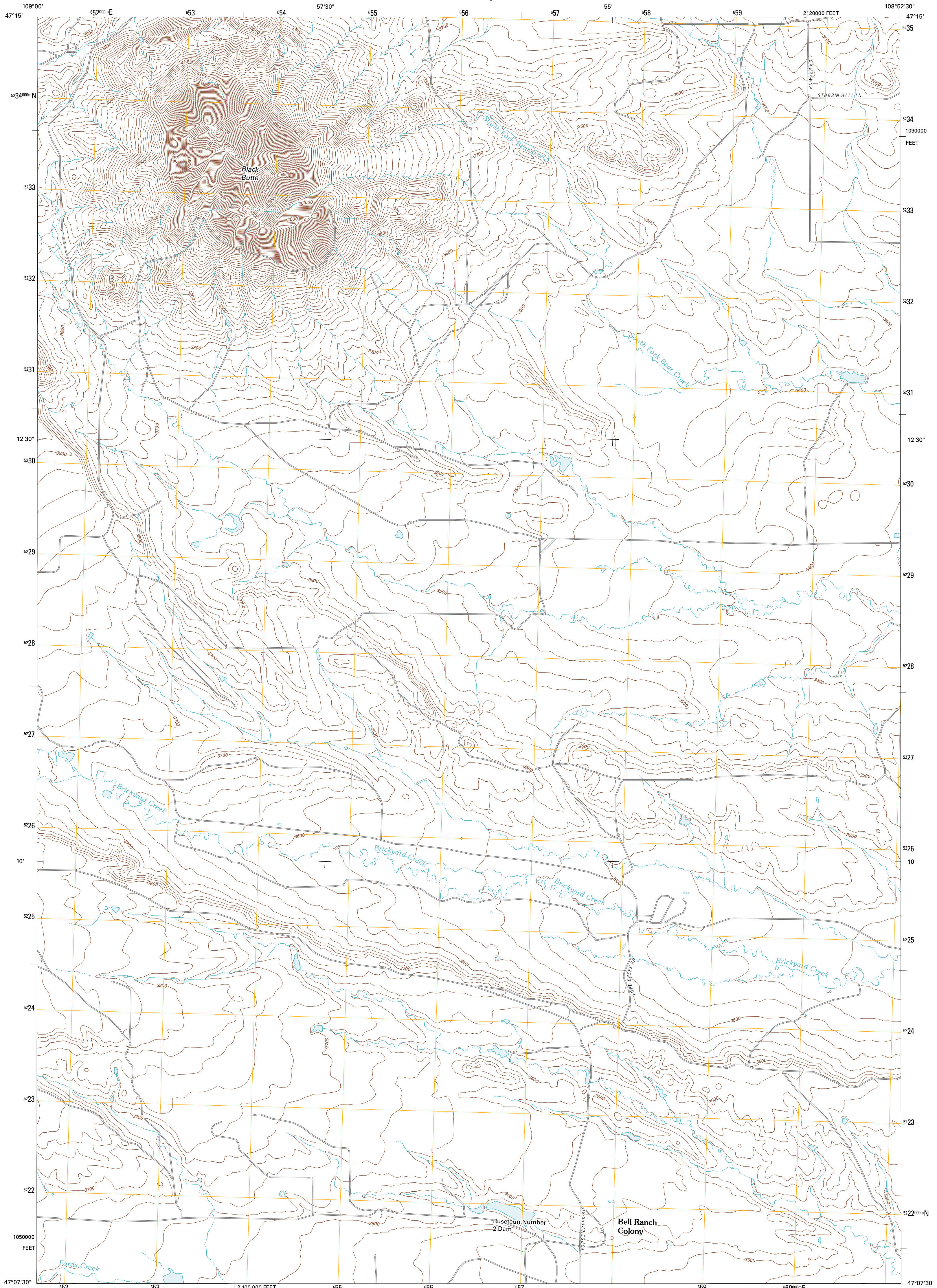




U.S. DEPARTMENT OF THE INTERIOR  
U. S. GEOLOGICAL SURVEY

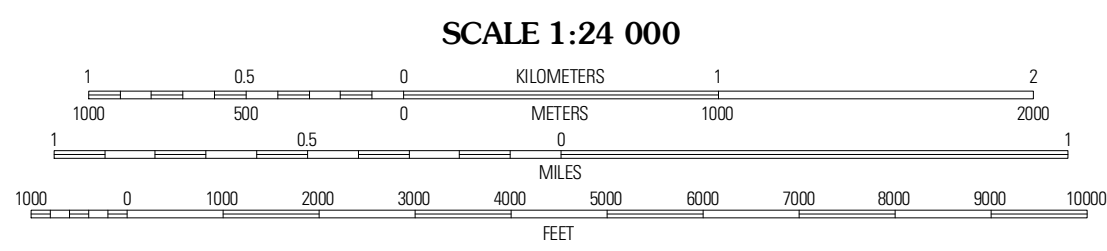
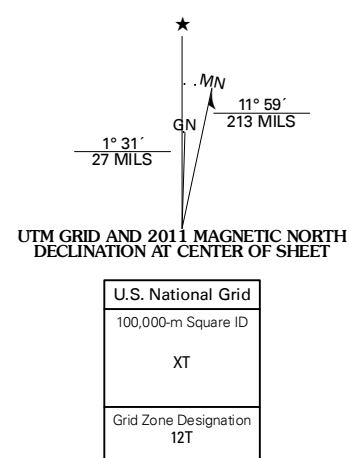


GRASS RANGE NW QUADRANGLE  
MONTANA-FERGUS CO.  
7.5-MINUTE SERIES



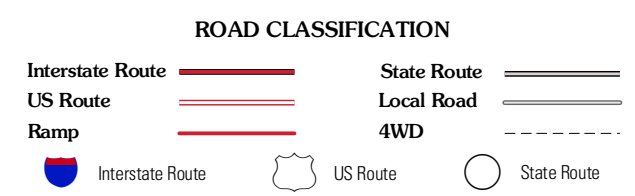
Produced by the United States Geological Survey  
North American Datum of 1983 (NAD83)  
World Geodetic System of 1984 (WGS84). Projection and  
1 000-meter grid: Universal Transverse Mercator, Zone 12T  
10 000-foot ticks: Montana Coordinate System of 1983

Imagery.....NAP, June 2009  
Roads.....©2006-2010 Tele Atlas  
Names.....GNIS, 2010  
Hydrography.....National Hydrography Dataset, 2009  
Contours.....National Elevation Dataset, 2005  
Boundaries.....Census, IBWC, IBG, USGS, 1972 - 2010



|                       |                |                  |
|-----------------------|----------------|------------------|
| Fergus                | Roy            | Bohemian Corners |
| Lois Peak             | Grass Range NW | Grass Range NE   |
| Horseshed Coulee East | Fish Dam       | Grass Range      |

ADJOINING 7.5 QUADRANGLES



CONTOUR INTERVAL 20 FEET  
NORTH AMERICAN VERTICAL DATUM OF 1988

This map was produced to conform with version 0.5.10  
of the USGS US Topo Product Standard.  
A metadata file associated with this product is draft version 0.5.16

GRASS RANGE NW, MT  
2011