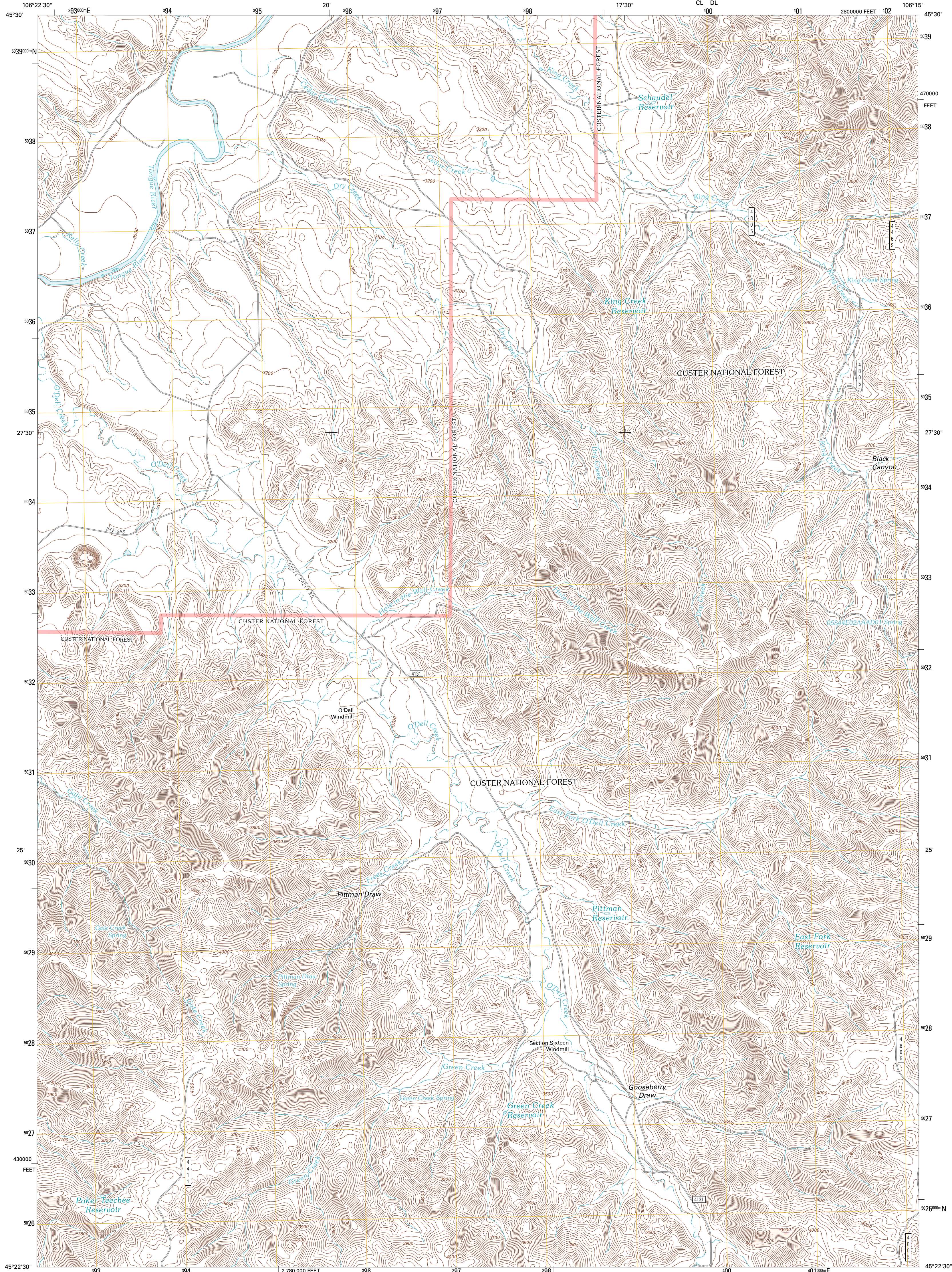




U.S. DEPARTMENT OF THE INTERIOR
U. S. GEOLOGICAL SURVEY

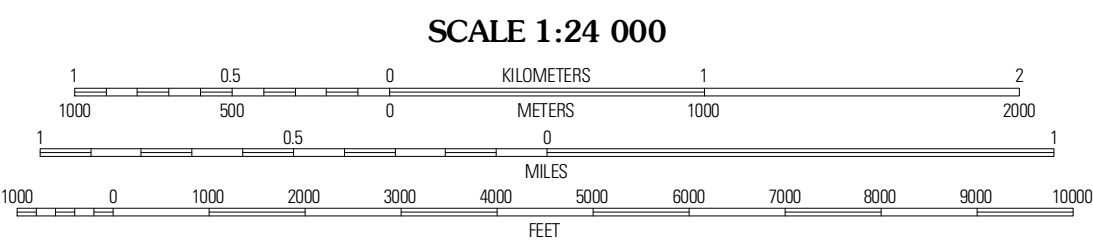
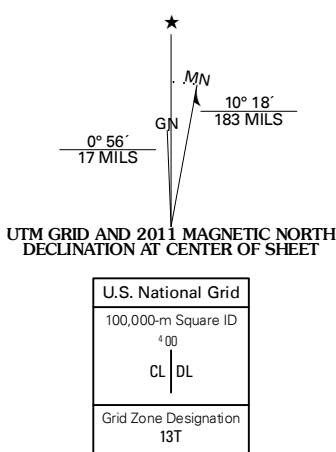


GREEN CREEK QUADRANGLE
MONTANA-ROSEBUD CO.
7.5-MINUTE SERIES

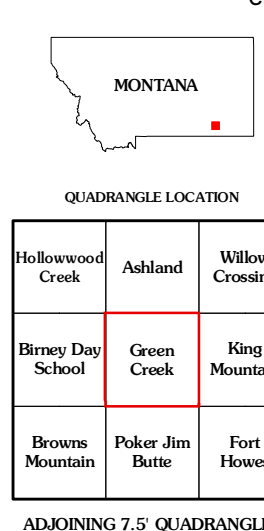


Produced by the United States Geological Survey
North American Datum of 1983 (NAD83)
World Geodetic System of 1984 (WGS84). Projection and
1 000-meter grid: Universal Transverse Mercator, Zone 13T
10 000-foot ticks: Montana Coordinate System of 1983

Imagery: NAD, August 2009
Roads: 2006-2010 Tele Atlas
Roads within US Forest Service Lands: FSTopo Data
with limited Forest Service updates, 2009
Names: GNS, 2010
Hydrography: National Hydrography Dataset, 2009
Contours: National Elevation Dataset, 2003
Boundaries: Census, IBWC, IBC, USGS, 1972 - 2010



CONTOUR INTERVAL 20 FEET
NORTH AMERICAN VERTICAL DATUM OF 1988
This map was produced to conform with version 0.5.10
of the USGS US Topo Product Standard.
A metadata file associated with this product is draft version 0.5.16



ROAD CLASSIFICATION

Interstate Route	State Route	US Route	State Route
US Route	Local Road	FS Passenger Route	FS High Clearance Route
Ramp	4WD		
FS Primary Route			

Check with local Forest Service unit for current travel conditions and restrictions.

GREEN CREEK, MT
2011

ADJOINING 7.5 QUADRANGLES

Hollywood Creek	Ashland	Willow Crossing
Breyer Day School	Green Creek	King Mountain
Browns Mountain	Poker Jim Butte	Fort Howes