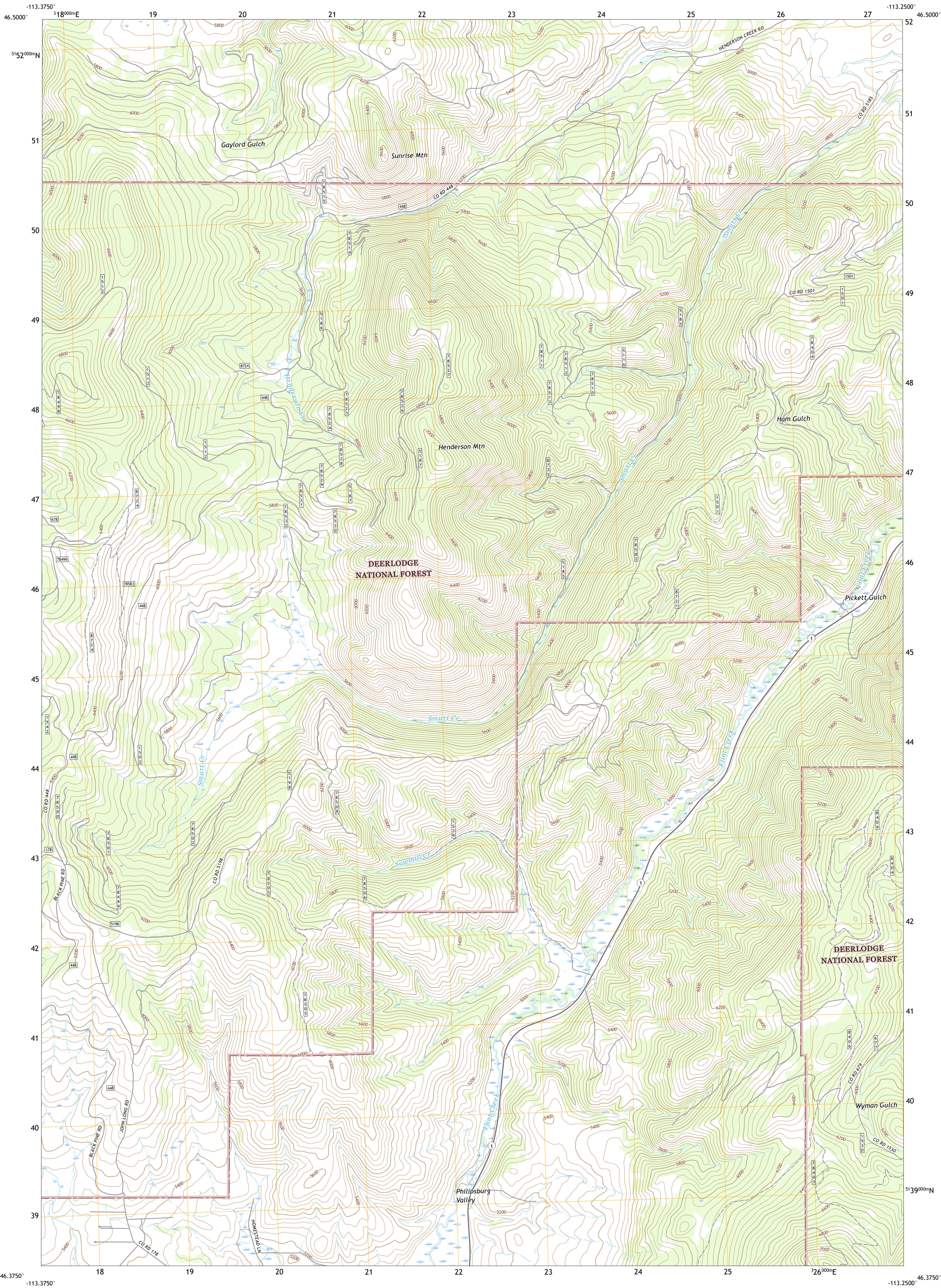




U.S. DEPARTMENT OF THE INTERIOR
U.S. GEOLOGICAL SURVEY



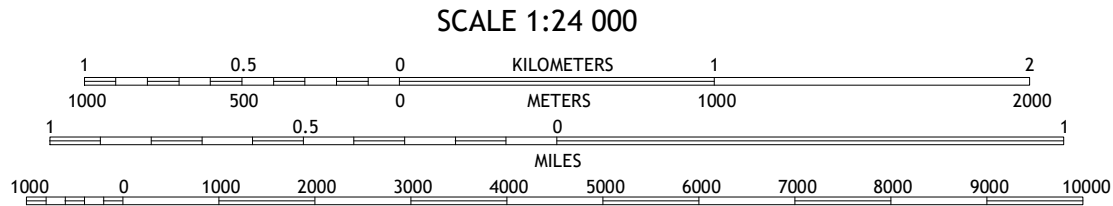
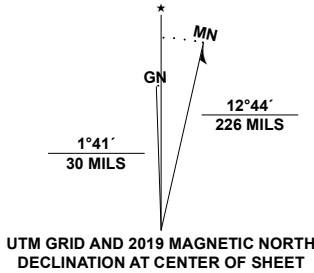
HENDERSON MOUNTAIN QUADRANGLE
MONTANA - GRANITE COUNTY
7.5-MINUTE SERIES



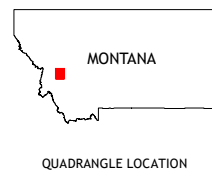
Produced by the United States Geological Survey

North American Datum of 1983 (NAD83)
World Geodetic System of 1984 (WGS84). Projection and
1 000-meter grid: Universal Transverse Mercator, Zone 12T
This map is not a legal document. Boundaries may be
generalized for this map scale. Private lands within government
reservations may not be shown. Obtain permission before
entering private lands.

Imagery.....N.A.P., October 2015 - January 2016
Roads.....U.S. Census Bureau, 2016
Roads within US Forest Service Lands.....FS Topo Data
with Limited Forest Service updates, 2013 - 2017
Names.....GHS, 1980 - 2020
Hydrography.....National Hydrography Dataset, 1899 - 2019
Contours.....National Elevation Dataset, 2005
Boundaries.....Multiple sources: see metadata file, 2018 - 2019
Public Land Survey System.....BLM, 2018
Wetlands.....FWS National Wetlands Inventory, 2009



CONTOUR INTERVAL 40 FEET
NORTH AMERICAN VERTICAL DATUM OF 1988
This map was produced to conform with the
National Geospatial Program US Topo Product Standard, 2011.
A metadata file associated with this product is draft version 0.6.18



1	2	3
4	5	6
7	8	9

ADJOINING QUADRANGLES

1 Harvey Point
2 Writing Hill
3 Hall
4 Black Pine Ridge
5 Maxwell
6 Antelope Creek
7 Phillipsburg
8 Fred Burr Lake

ROAD CLASSIFICATION		
Expressway	Local Connector	
Secondary Hwy	Local Road	
Ramp	4WD	
Interstate Route	US Route	State Route
FS Primary Route	FS Passenger Route	FS High Clearance Route

Check with local Forest Service unit
for current travel conditions and restrictions.

HENDERSON MOUNTAIN, MT
2020

