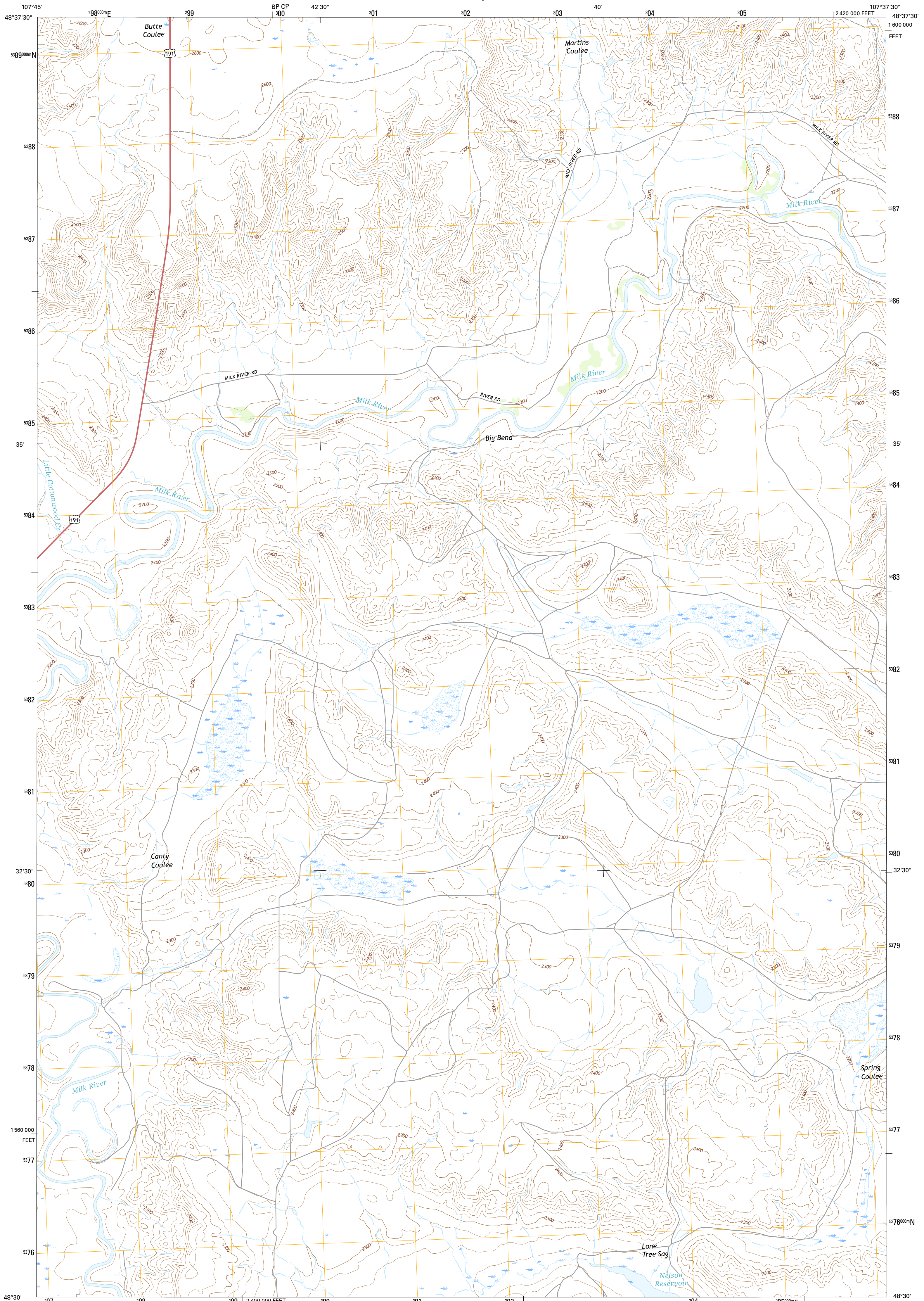




U.S. DEPARTMENT OF THE INTERIOR  
U.S. GEOLOGICAL SURVEY



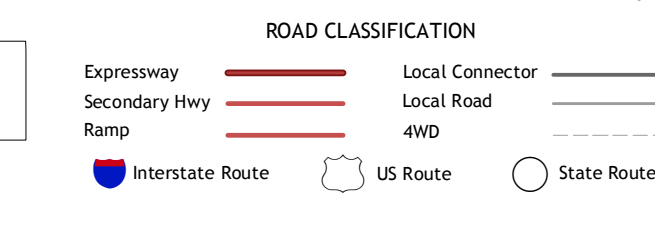
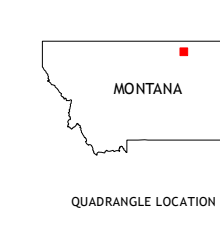
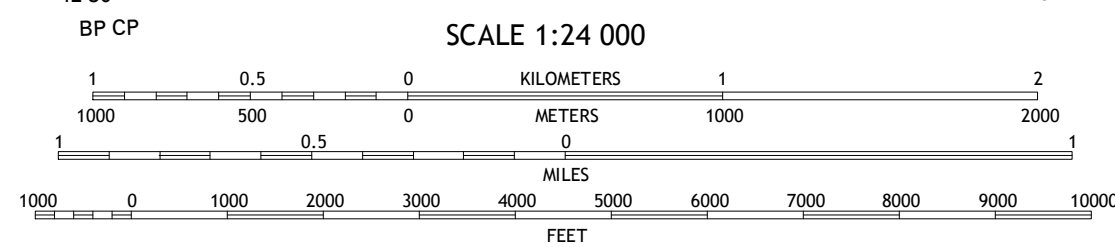
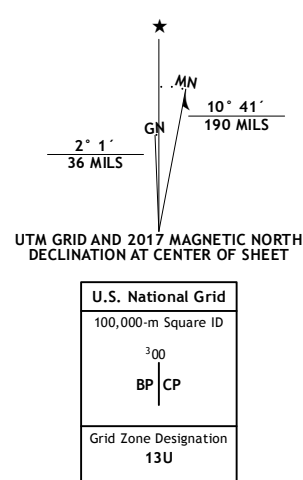
HEWITT LAKE SW QUADRANGLE  
MONTANA-PHILLIPS CO.  
7.5-MINUTE SERIES



Produced by the United States Geological Survey  
North American Datum of 1983 (NAD83)  
World Geodetic System of 1984 (WGS84), Projection and  
1 000-meter grid: Universal Transverse Mercator, Zone 13U  
10 000-foot ticks: Montana Coordinate System of 1983

This map is not a legal document. Boundaries may be  
generalized for this map scale. Private lands within government  
reservations may not be shown. Obtain permission before  
entering private lands.

Imagery.....NAIP, January 2016  
Roads.....U.S. Census Bureau, 2015 - 2016  
Names.....GNS, 2016  
Hydrography.....National Hydrography Dataset, 2016  
Contours.....National Elevation Dataset, 1999  
Boundaries.....Multiple sources; see metadata file 1972 - 2016  
Public Land Survey System.....BLM, 2016  
Wetlands.....FWS National Wetlands Inventory 1977 - 2014



|   |   |   |                 |
|---|---|---|-----------------|
| 1 | 2 | 3 | 1 Austin Coulee |
| 2 | 3 | 4 | 2 Austin Lake   |
| 3 | 4 | 5 | 3 Tattnell      |
| 4 | 5 | 6 | 4 Fanny Hill    |
| 5 | 6 | 7 | 5 Hewitt Lake   |
| 6 | 7 | 8 | 6 Malta NE      |
| 7 | 8 |   | 7 Lake Bowdoin  |
| 8 |   |   | 8 Bowdoin       |

HEWITT LAKE SW, MT  
2017

