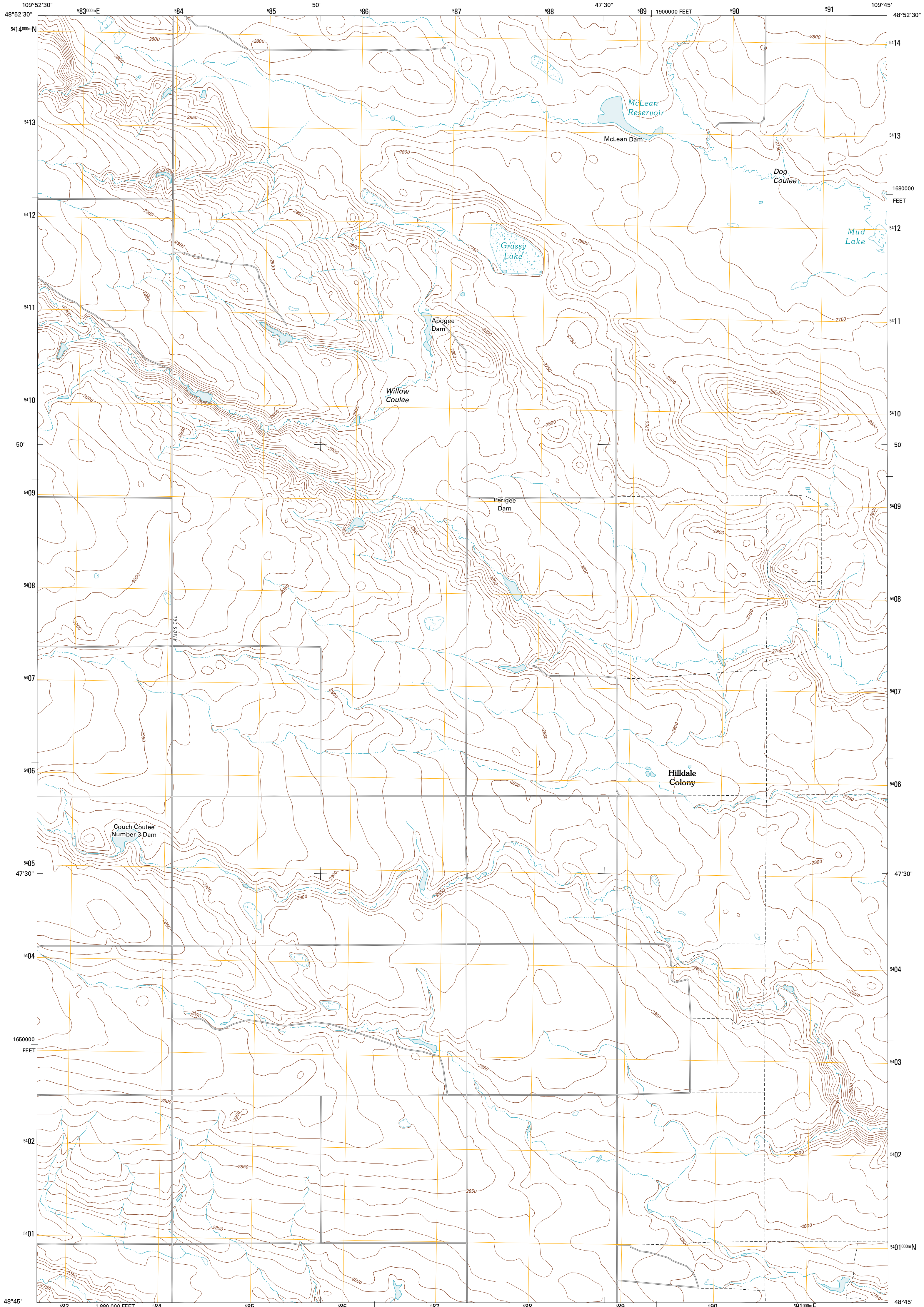




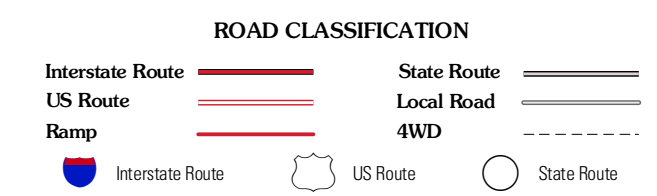
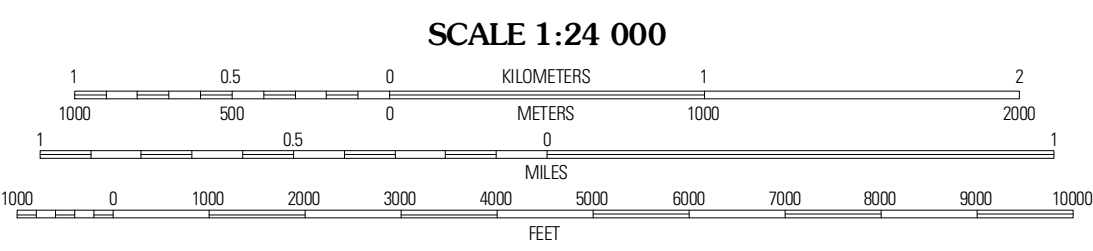
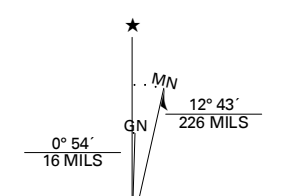
U.S. DEPARTMENT OF THE INTERIOR  
U. S. GEOLOGICAL SURVEY



HILLDALE COLONY QUADRANGLE  
MONTANA-HILL CO.  
7.5-MINUTE SERIES



Produced by the United States Geological Survey  
North American Datum of 1983 (NAD83)  
World Geodetic System of 1984 (WGS84) Projection and  
1 000-meter grid: Universal Transverse Mercator, Zone 12U  
10 000-foot ticks: Montana Coordinate System of 1983



Imagery.....NAIP, August 2009  
Roads.....©2006-2010 Tele Atlas  
Names.....National Geographic, 2010  
Hydrography.....National Elevation Dataset, 2009  
Contours.....National Elevation Dataset, 2008  
Boundaries.....Census, IBWC, IBC, USGS, 1972 - 2010

UTM GRID AND 2011 MAGNETIC NORTH DECLINATION AT CENTER OF SHEET

U.S. National Grid	12° 43' W
100,000-m Square ID	WW
Grid Zone Designation	12U

CONTOUR INTERVAL 10 FEET  
NORTH AMERICAN VERTICAL DATUM OF 1988  
This map was produced to conform with version 0.5.10 of the USGS US Topo Product Standard.  
A metadata file associated with this product is draft version 0.5.16

QUADRANGLE LOCATION

Wild Horse Lake East	Creedman Coulee West	Creedman Coulee East
Cottowood	Hilldale Colony	Lake Thibodeau SW
Kishers Coulee	Quigley Coulee	Have NW

ADJOINING 7.5' QUADRANGLES

HILLDALE COLONY, MT  
2011