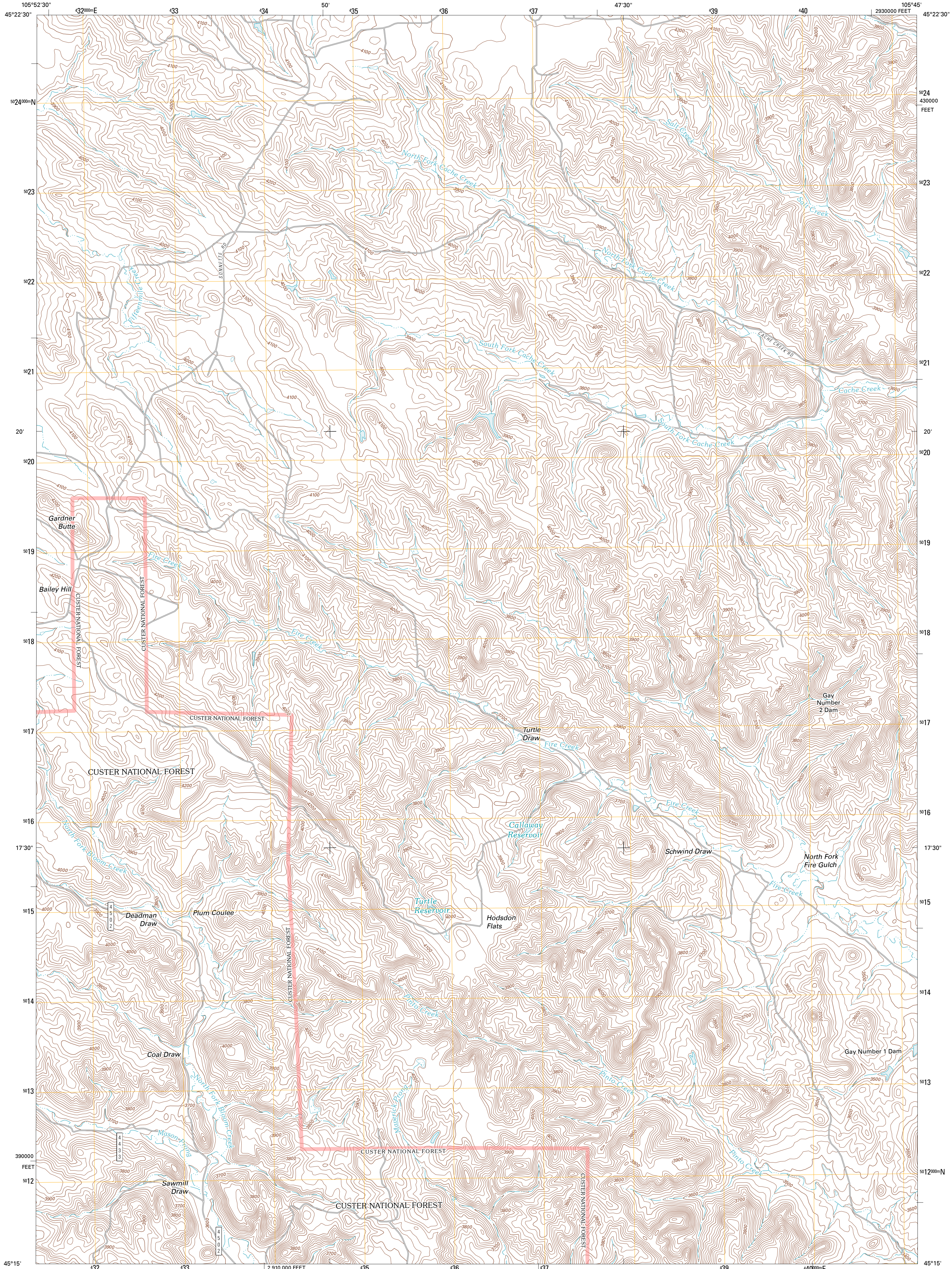




U.S. DEPARTMENT OF THE INTERIOR  
U. S. GEOLOGICAL SURVEY

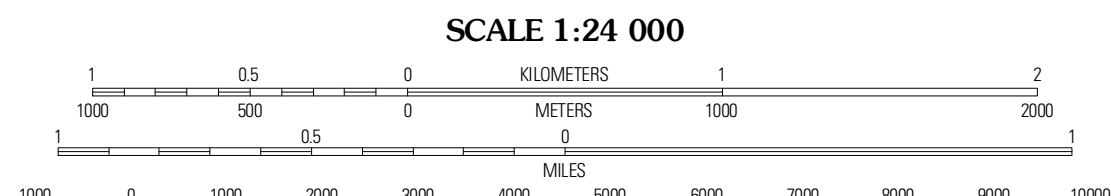
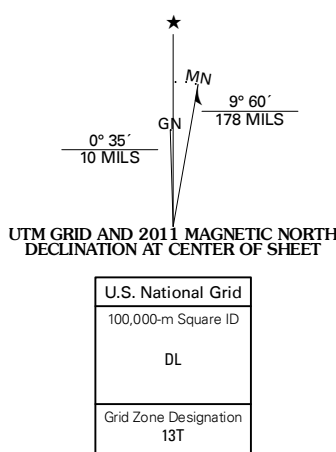


HODSDON FLATS QUADRANGLE  
MONTANA-POWDER RIVER CO.  
7.5-MINUTE SERIES

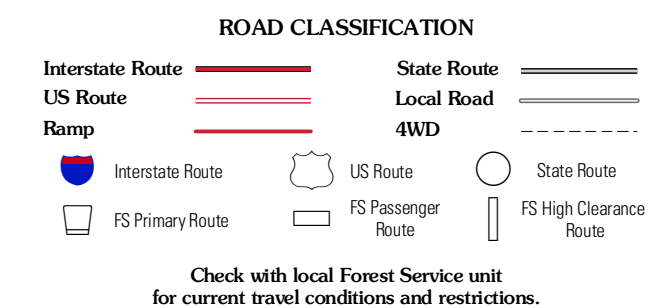
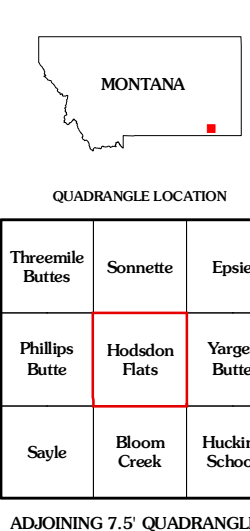


Produced by the United States Geological Survey  
North American Datum of 1983 (NAD83)  
World Geodetic System of 1984 (WGS84). Projection and  
1 000 meter grid: Universal Transverse Mercator, Zone 13T  
10 000-foot ticks: Montana Coordinate System of 1983

Imagery: NAD, July 2009  
Roads: 2006-2010 TLE Atlas  
Roads within US Forest Service Lands: FSTopo Data  
with limited Forest Service updates, 2009  
Names: GNS, 2010  
Hydrography: National Hydrography Dataset, 2009  
Contours: National Elevation Dataset, 2003  
Boundaries: Census, IBWC, IBC, USGS, 1972 - 2010



CONTOUR INTERVAL 20 FEET  
NORTH AMERICAN VERTICAL DATUM OF 1988  
This map was produced to conform with version 0.5.10  
of the USGS US Topo Product Standard.  
A metadata file associated with this product is draft version 0.5.16



Check with local Forest Service unit  
for current travel conditions and restrictions.

HODSDON FLATS, MT  
2011

QUADRANGLE LOCATION

Threemile Butte	Sonnette	Epse
Phillips Butte	Hodsdon Flats	Yarger Butte
Style	Bloom Creek	Huckins School

ADJOINING 7.5 QUADRANGLES