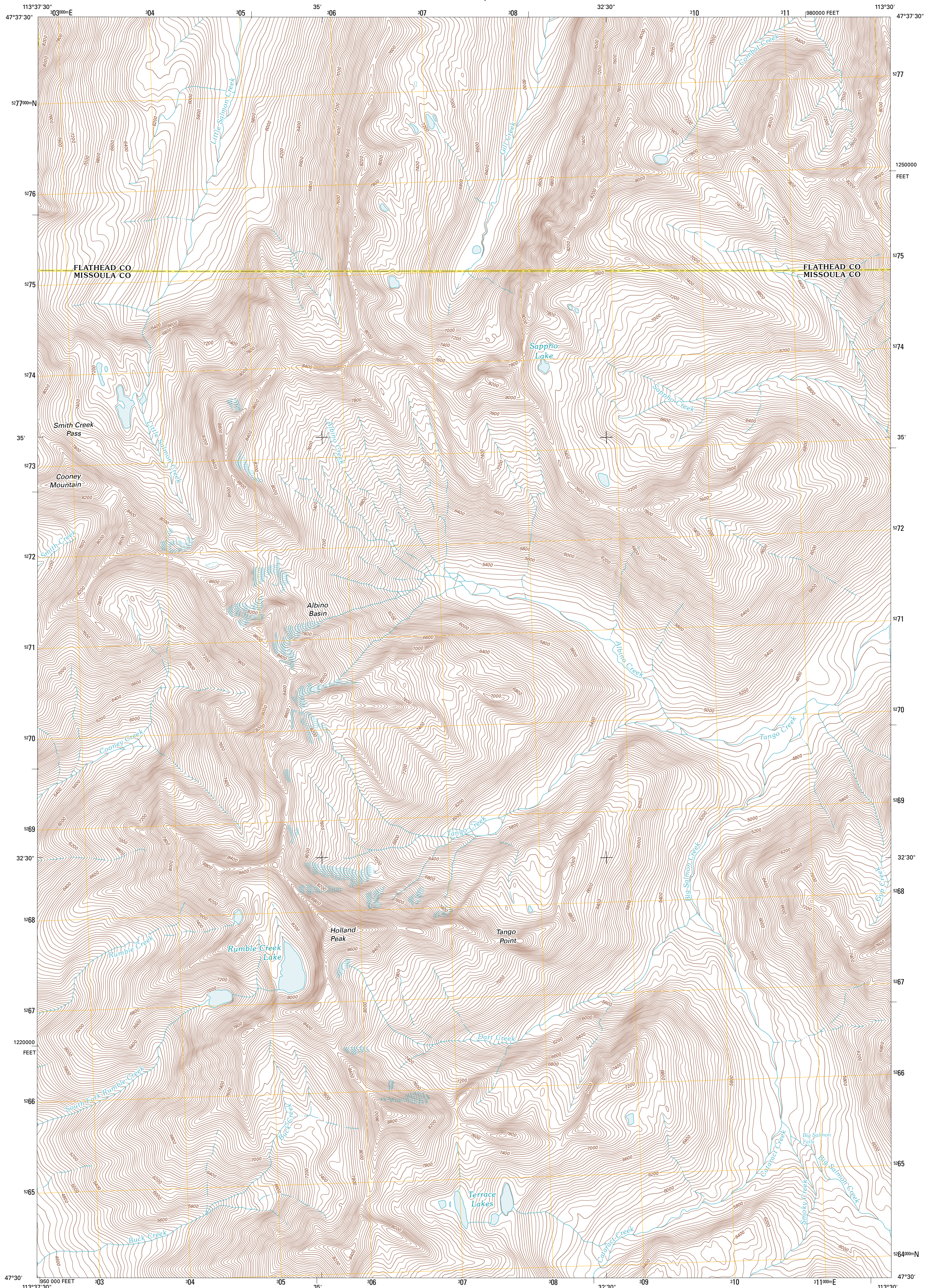




U.S. DEPARTMENT OF THE INTERIOR  
U. S. GEOLOGICAL SURVEY

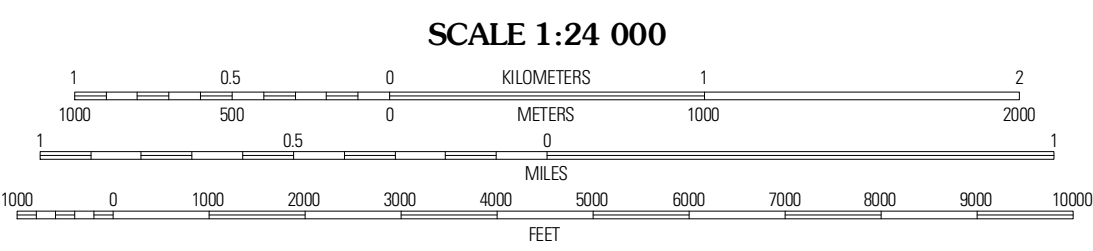
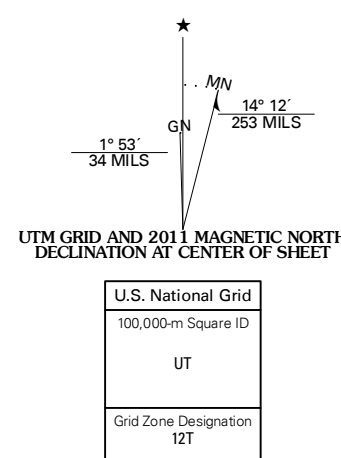


HOLLAND PEAK QUADRANGLE  
MONTANA  
7.5-MINUTE SERIES

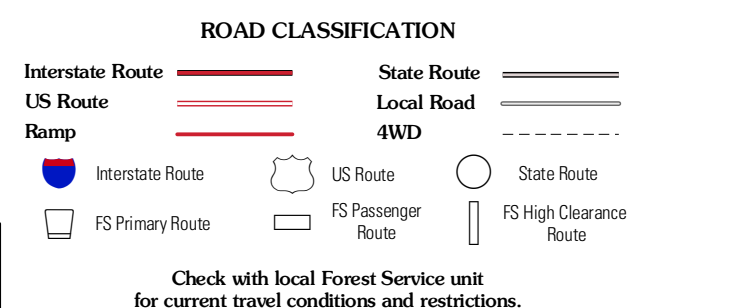
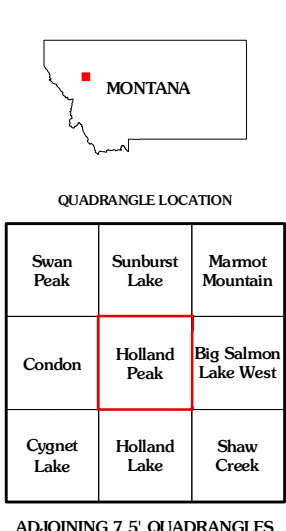


Produced by the United States Geological Survey  
North American Datum of 1983 (NAD83)  
World Geodetic System of 1984 (WGS84). Projection and  
1 000 meter grid. Universal Transverse Mercator, Zone 12T  
10 000-foot ticks. Montana Coordinate System of 1983

Imagery.....NAP, July 2009  
Roads.....©2006-2010 Tele Atlas  
Roads within US Forest Service Lands.....FSTopo Data  
with limited Forest Service updates, 2009  
Names.....©2006-2010 Tele Atlas  
Hydrography.....National Hydrography Dataset, 2010  
Contours.....National Elevation Dataset, 1999  
Boundaries.....Census, IBWC, IBC, USGS, 1972 - 2010



SCALE 1:24 000  
CONTOUR INTERVAL 40 FEET  
NORTH AMERICAN VERTICAL DATUM OF 1988  
This map was produced to conform with version 0.5.10  
of the USGS US Topo Product Standard.  
A metadata file associated with this product is draft version 0.5.16



Check with local Forest Service unit for current travel conditions and restrictions.

HOLLAND PEAK, MT  
2011

ADJOINING 7.5' QUADRANGLES