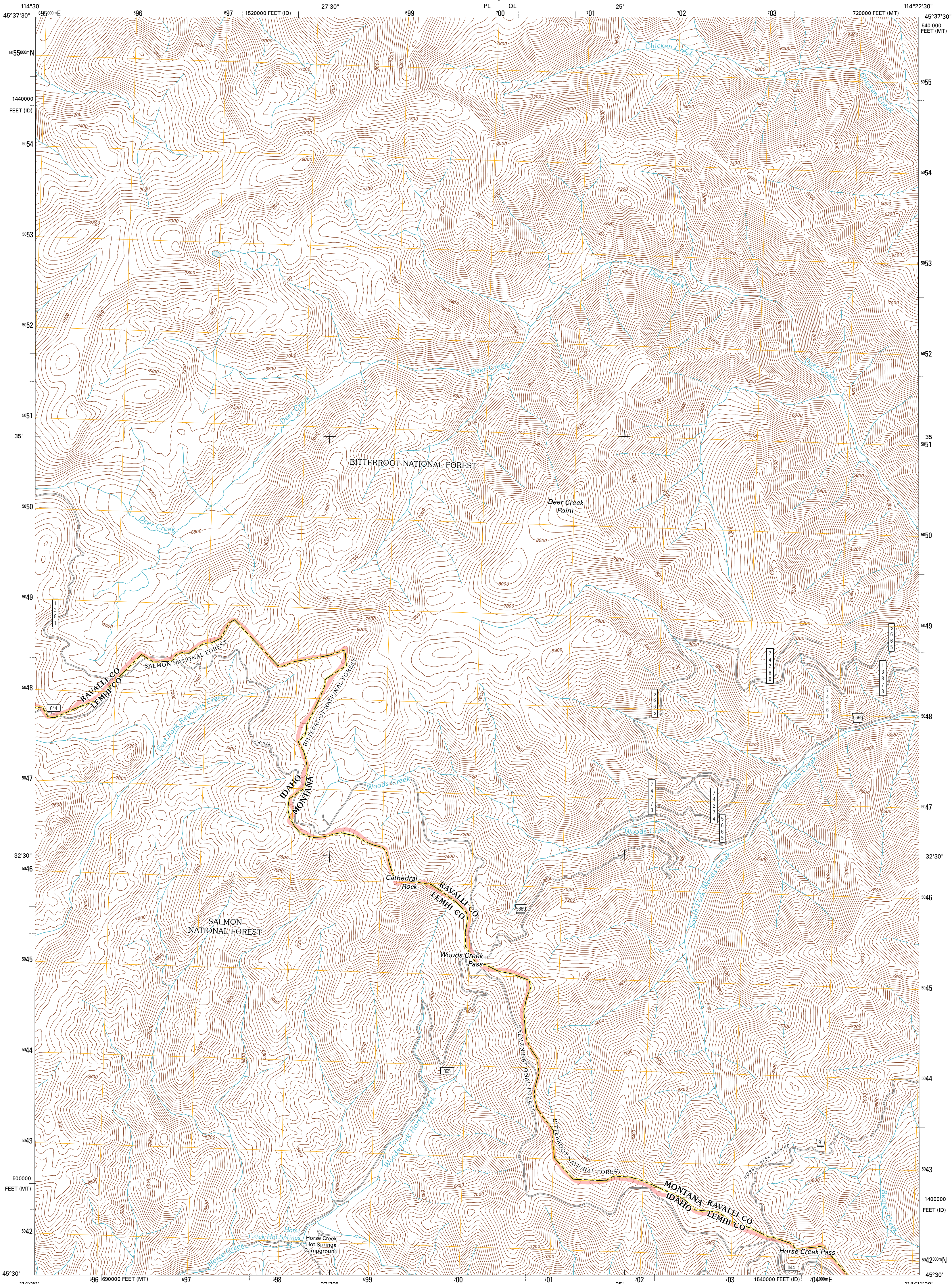




U.S. DEPARTMENT OF THE INTERIOR  
U. S. GEOLOGICAL SURVEY

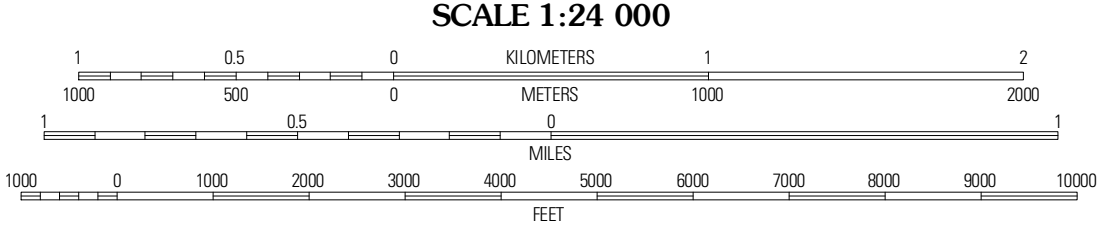
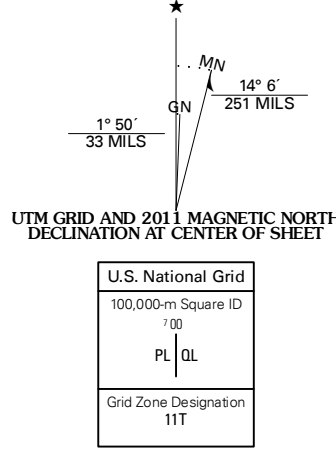


HORSE CREEK PASS QUADRANGLE  
MONTANA-IDAHO  
7.5-MINUTE SERIES



Produced by the United States Geological Survey  
North American Datum of 1983 (NAD83)  
World Geodetic System of 1984 (WGS84). Projection and  
1 000-meter grid: Universal Transverse Mercator, Zone 11T  
10 000-foot ticks: Montana Coordinate System of 1983,  
Idaho Coordinate System of 1983 (central zone)

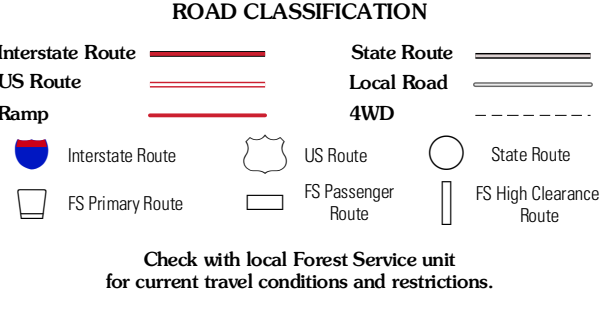
Imagery.....NAP, July 2009  
Roads.....52006-2010 Tele Atlas  
Roads within US Forest Service Lands.....FSTopo Data  
with limited Forest Service updates, 2009  
Names.....GNIS, 2010  
Hydrography.....National Hydrography Dataset, 2009  
Contours.....National Elevation Dataset, 2002  
Boundaries.....Census, IBWC, IBC, USGS, 1972 - 2010



CONTOUR INTERVAL 40 FEET  
NORTH AMERICAN VERTICAL DATUM OF 1988  
This map was produced to conform with version 0.5.10  
of the USGS US Topo Product Standard.  
A metadata file associated with this product is draft version 0.5.16



Nez Perce Peak	Bare Cone	Painted Rocks Lake
Blue Joint	Horse Creek Pass	Alta
Horse Creek Butte	Thucup Hill	Shoop



HORSE CREEK PASS, MT-ID  
2011