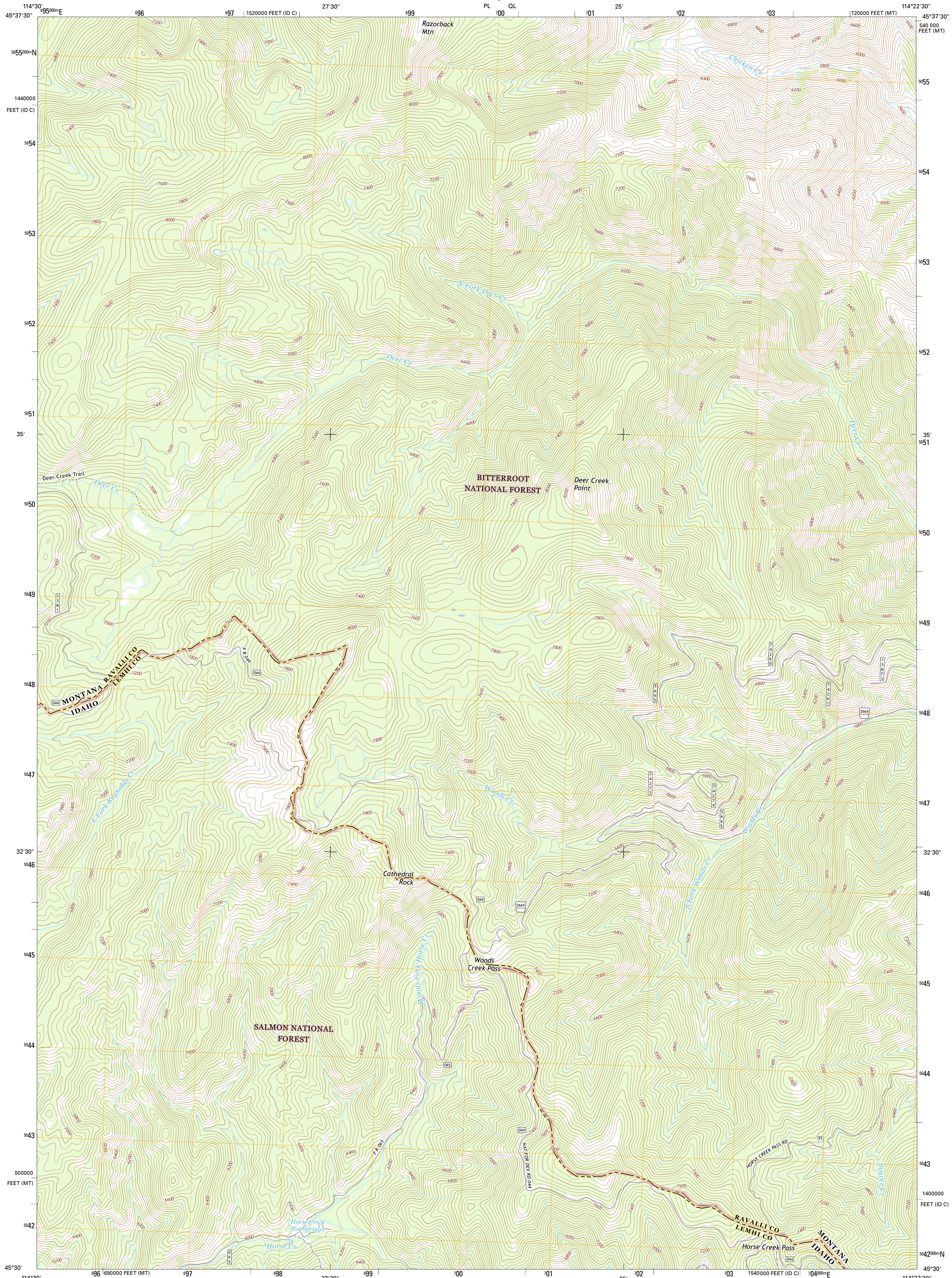




U.S. DEPARTMENT OF THE INTERIOR
U.S. GEOLOGICAL SURVEY



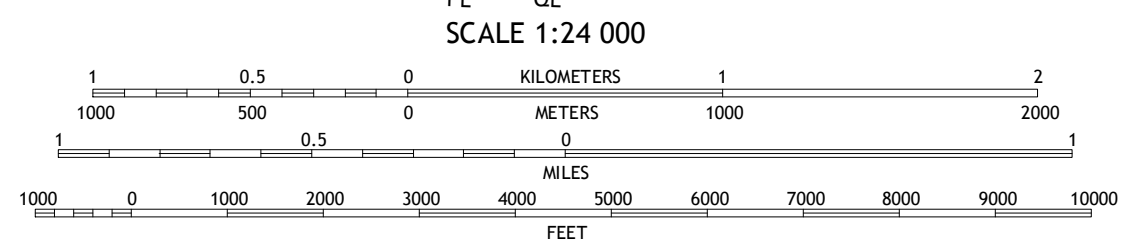
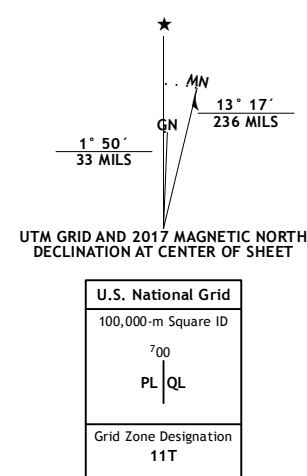
HORSE CREEK PASS QUADRANGLE
MONTANA-IDAHO
7.5-MINUTE SERIES



Produced by the United States Geological Survey
 North American Datum of 1983 (NAD83)
 World Geodetic System of 1984 (WGS84). Projection and
 1 000-meter grid: Universal Transverse Mercator, Zone 11T
 10 000-foot ticks: Montana Coordinate System of 1983, Idaho
 Coordinate System of 1983 (central zone)

This map is not a legal document. Boundaries may be
 generalized for this map scale. Private lands within government
 reservations may not be shown. Obtain permission before
 entering private lands.

Imagery.....N.A.I.P. January 2016
 Roads.....U.S. Census Bureau, 2015 - 2016
 Roads within US Forest Service Lands.....FSTopo Data
 with limited Forest Service updates, 2012 - 2016
 Names.....GNIS, 2016
 Hydrography.....National Hydrography Dataset, 2016
 Contours.....National Elevation Dataset, 2002
 Boundaries.....Multiple sources; see metadata file 1972 - 2016
 Public Land Survey System.....BLM, 2015 - 2016
 Wetlands.....FWS National Wetlands Inventory 1977 - 2014



ROAD CLASSIFICATION

Expressway	Local Connector
Secondary Hwy	Local Road
Ramp	4WD
Interstate Route	US Route
FS Primary Route	FS Passenger Route
	FS High Clearance Route

Check with local Forest Service unit
 for current travel conditions and restrictions.

ADJOINING QUADRANGLES

1	2	3
4	5	6
7	8	

1 Nez Perce Peak
 2 Bare Cone
 3 Painted Rocks Lake
 4 Blue Joint
 5 Alta
 6 Horse Creek Butte
 7 Tincup Hill
 8 Shoup

HORSE CREEK PASS, MT-ID
 2017

