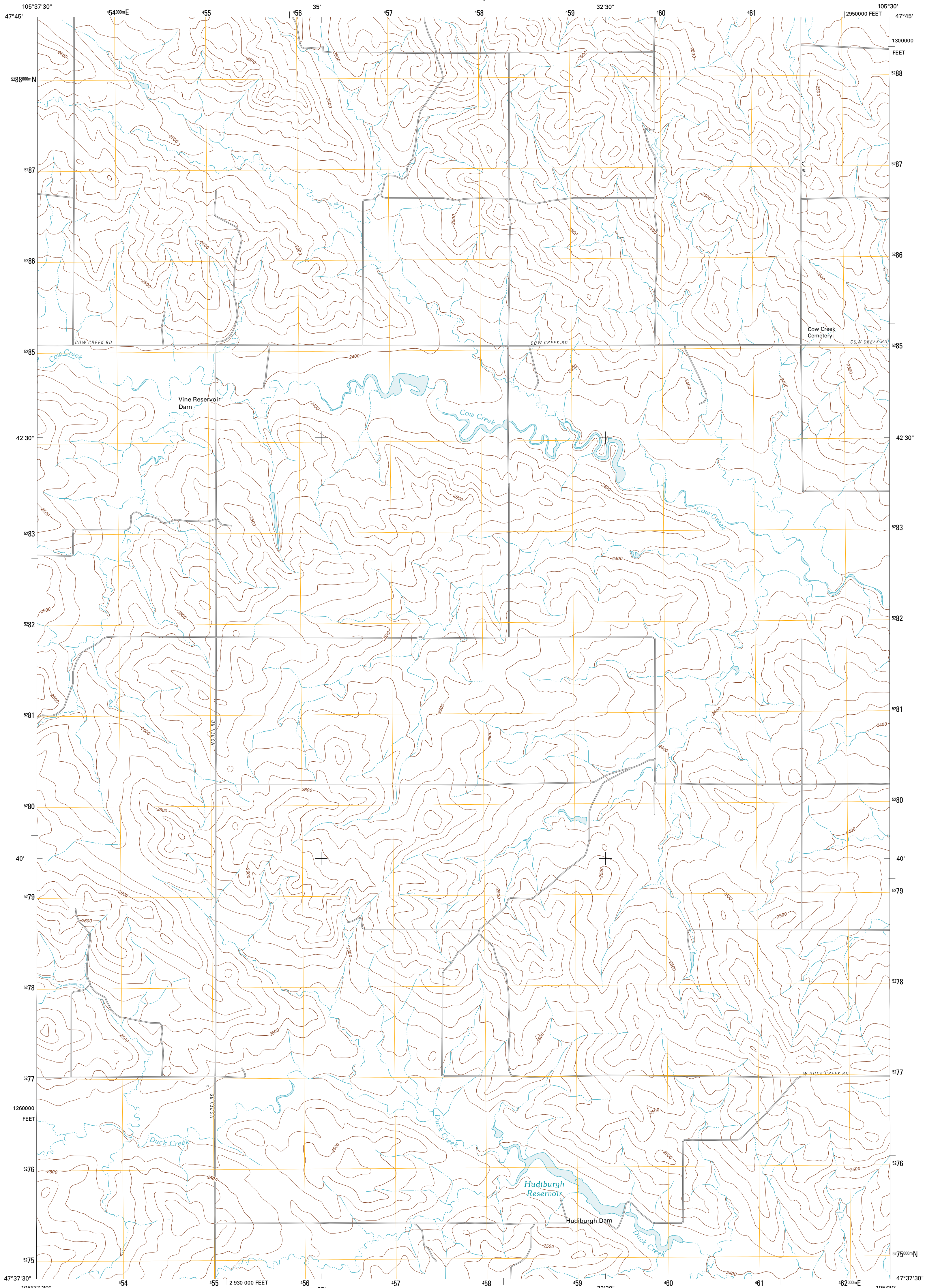




U.S. DEPARTMENT OF THE INTERIOR  
U. S. GEOLOGICAL SURVEY

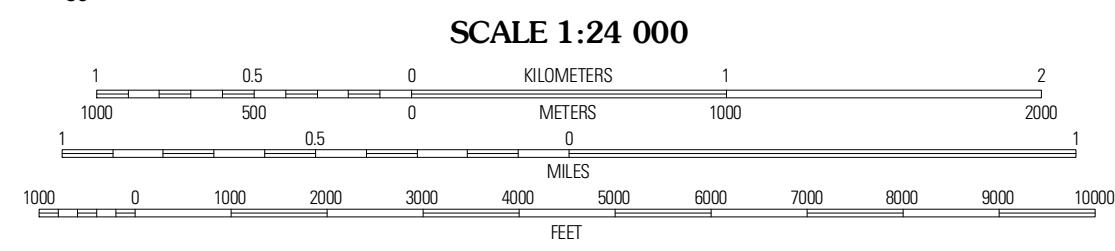
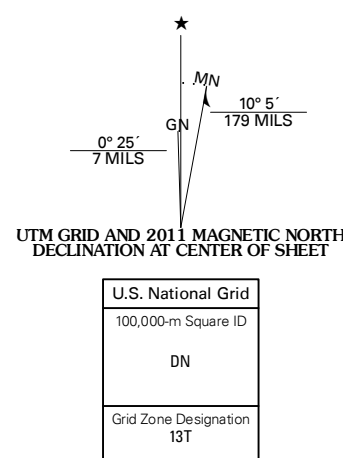


HUDIBURGH RESERVOIR QUADRANGLE  
MONTANA-MCCONE CO.  
7.5-MINUTE SERIES

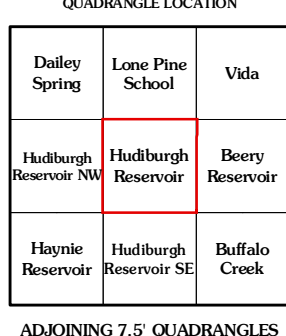
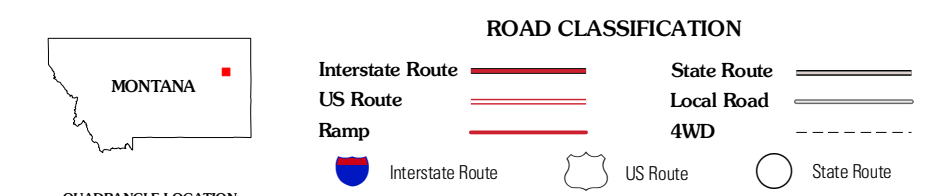


Produced by the United States Geological Survey  
North American Datum of 1983 (NAD83)  
World Geodetic System of 1984 (WGS84). Projection and  
1 000-meter grid: Universal Transverse Mercator, Zone 13T  
10 000-foot ticks: Montana Coordinate System of 1983

Imagery.....NAIP, July 2009  
Roads.....©2006-2010 Tele Atlas  
Names.....GNS, 2010  
Hydrography.....National Hydrography Dataset, 2009  
Contours.....National Elevation Dataset, 2009  
Boundaries.....Census, IBWC, IBC, USGS, 1972 - 2010



SCALE 1:24 000  
CONTOUR INTERVAL 20 FEET  
NORTH AMERICAN VERTICAL DATUM OF 1988  
This map was produced to conform with version 0.5.10  
of the USGS US Topo Product Standard.  
A metadata file associated with this product is draft version 0.5.16



ADJOINING 7.5' QUADRANGLES		
Dalley Spring	Loze Pine	Vida
Hudiburgh Reservoir NW	Hudiburgh Reservoir	Berry Reservoir
Haystack Reservoir	Hudiburgh Reservoir SE	Buffalo Creek

HUDIBURGH RESERVOIR, MT  
2011