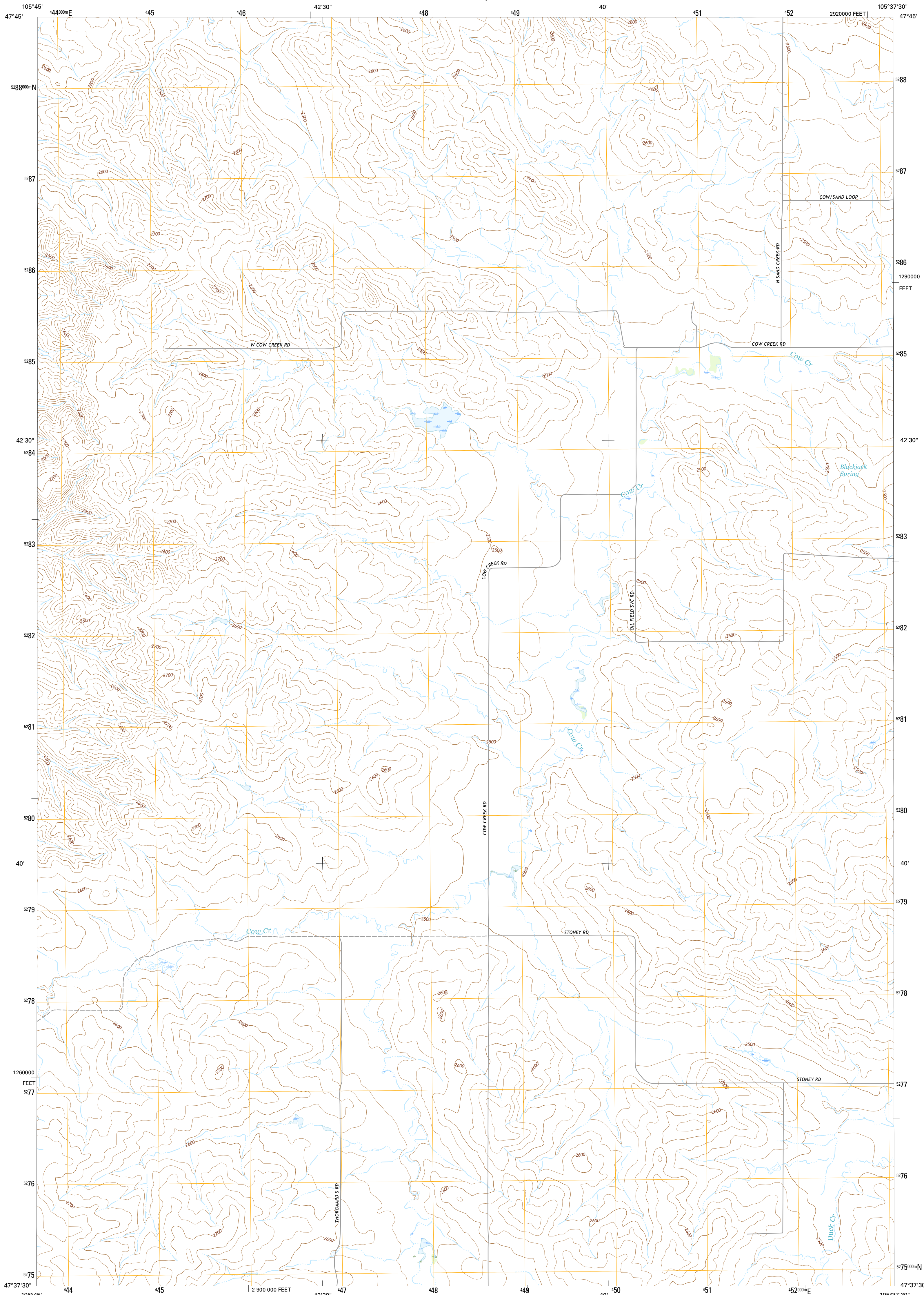




U.S. DEPARTMENT OF THE INTERIOR  
U.S. GEOLOGICAL SURVEY



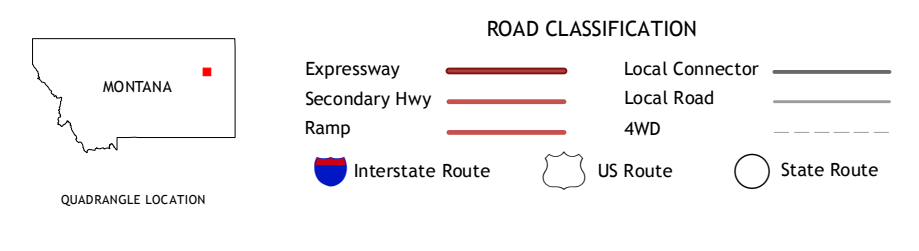
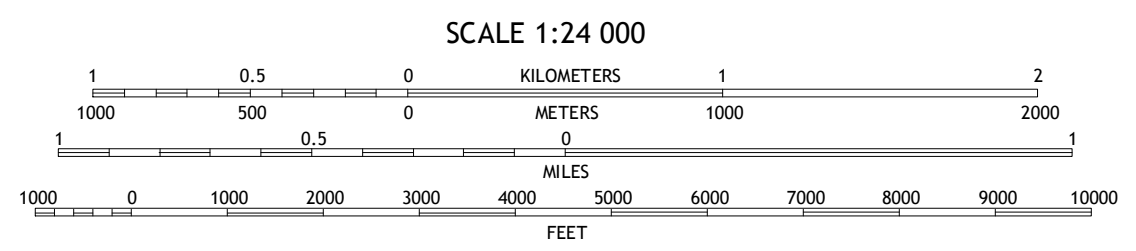
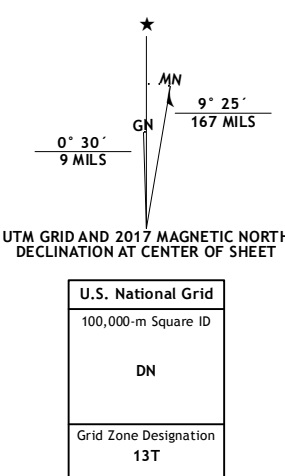
HUDIBURGH RESERVOIR NW QUADRANGLE  
MONTANA-MCCONE CO.  
7.5-MINUTE SERIES



Produced by the United States Geological Survey  
North American Datum of 1983 (NAD83)  
World Geodetic System of 1984 (WGS84). Projection and  
1 000-meter grid: Universal Transverse Mercator, Zone 13T  
10 000-foot ticks: Montana Coordinate System of 1983

This map is not a legal document. Boundaries may be  
generalized for this map scale. Private lands within government  
reservations may not be shown. Obtain permission before  
entering private lands.

Imagery	.....NAIP, January 2016
Roads	.....U.S. Census Bureau, 2015 - 2016
Names	.....GNIS, 2016
Hydrography	.....National Hydrography Dataset, 2016
Contours	.....National Elevation Dataset, 2009
Boundaries	.....Multiple sources; see metadata file 1972 - 2016
Public Land Survey System	.....BLM, 2016
Wetlands	.....FWS National Wetlands Inventory 1977 - 2014



CONTOUR INTERVAL 20 FEET  
NORTH AMERICAN VERTICAL DATUM OF 1988  
This map was produced to conform with the  
National Geospatial Program US Topo Product Standard, 2011.  
A metadata file associated with this product is draft version 0.6.19

1	2	3
4	5	6
7	8	

ADJOINING QUADRANGLES

1 Sadie Coulee  
2 Dalley Spring  
3 Lone Pine School  
4 Pedigo Coulee  
5 Hudiburgh Reservoir  
6 North Fork Horse Creek  
7 Haymie Reservoir  
8 Hudiburgh Reservoir SE

**HUDIBURGH RESERVOIR NW, MT**  
2017

