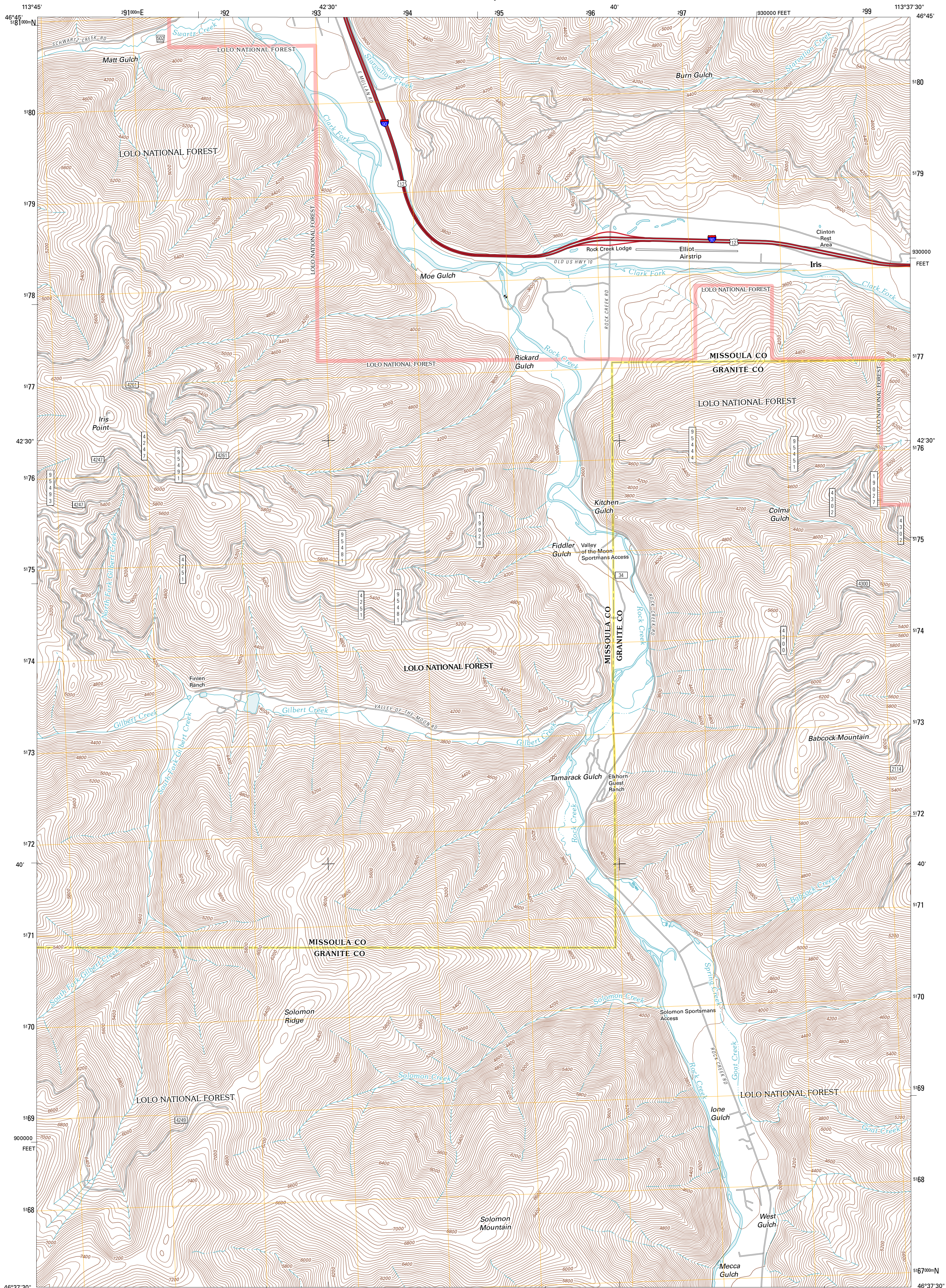




U.S. DEPARTMENT OF THE INTERIOR
U. S. GEOLOGICAL SURVEY

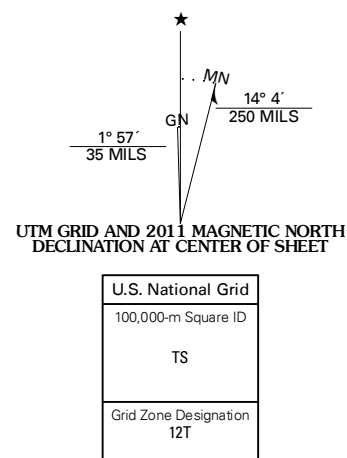


IRIS POINT QUADRANGLE
MONTANA
7.5-MINUTE SERIES

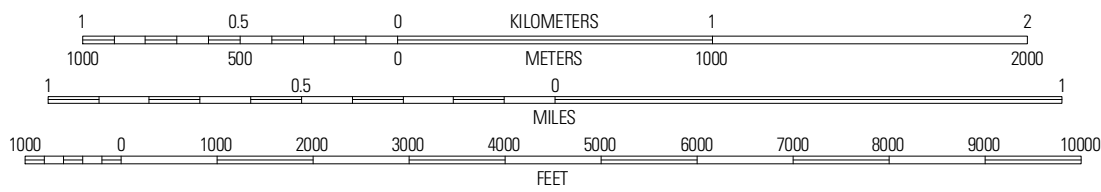


Produced by the United States Geological Survey
North American Datum of 1983 (NAD83)
World Geodetic System of 1984 (WGS84). Projection and
1 000-meter grid: Universal Transverse Mercator, Zone 12T
10 000-foot ticks: Montana Coordinate System of 1983

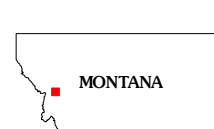
Imagery.....NAP, July 2009
Roads.....5/2006-2010 Tele Atlas
Roads within US Forest Service Lands.....FS Topo Data
with limited Forest Service updates, 2009
Names.....National Hydrography Dataset, 2010
Hydrography.....National Hydrography Dataset, 2009
Contours.....National Elevation Dataset, 2005
Boundaries.....Census, IBWC, IBC, USGS, 1972 - 2010



SCALE 1:24 000



CONTOUR INTERVAL 40 FEET
NORTH AMERICAN VERTICAL DATUM OF 1988
This map was produced to conform with version 0.5.10
of the USGS US Topo Product Standard.
A metadata file associated with this product is draft version 0.5.16



| ADJOINING 7.5' QUADRANGLES | | |
|----------------------------|-------------|---------------|
| Bonner | Clinton | Mineral Ridge |
| Elk Mountain | Iris Point | Ravenna |
| Cleveland Mountain | Groby Point | Spink Point |

ROAD CLASSIFICATION

Interstate Route State Route
US Route Local Road
Ramp 4WD
Interstate Route US Route
FS Primary Route FS Passenger Route
FS High Clearance Route

Check with local Forest Service unit
for current travel conditions and restrictions.

IRIS POINT, MT
2011