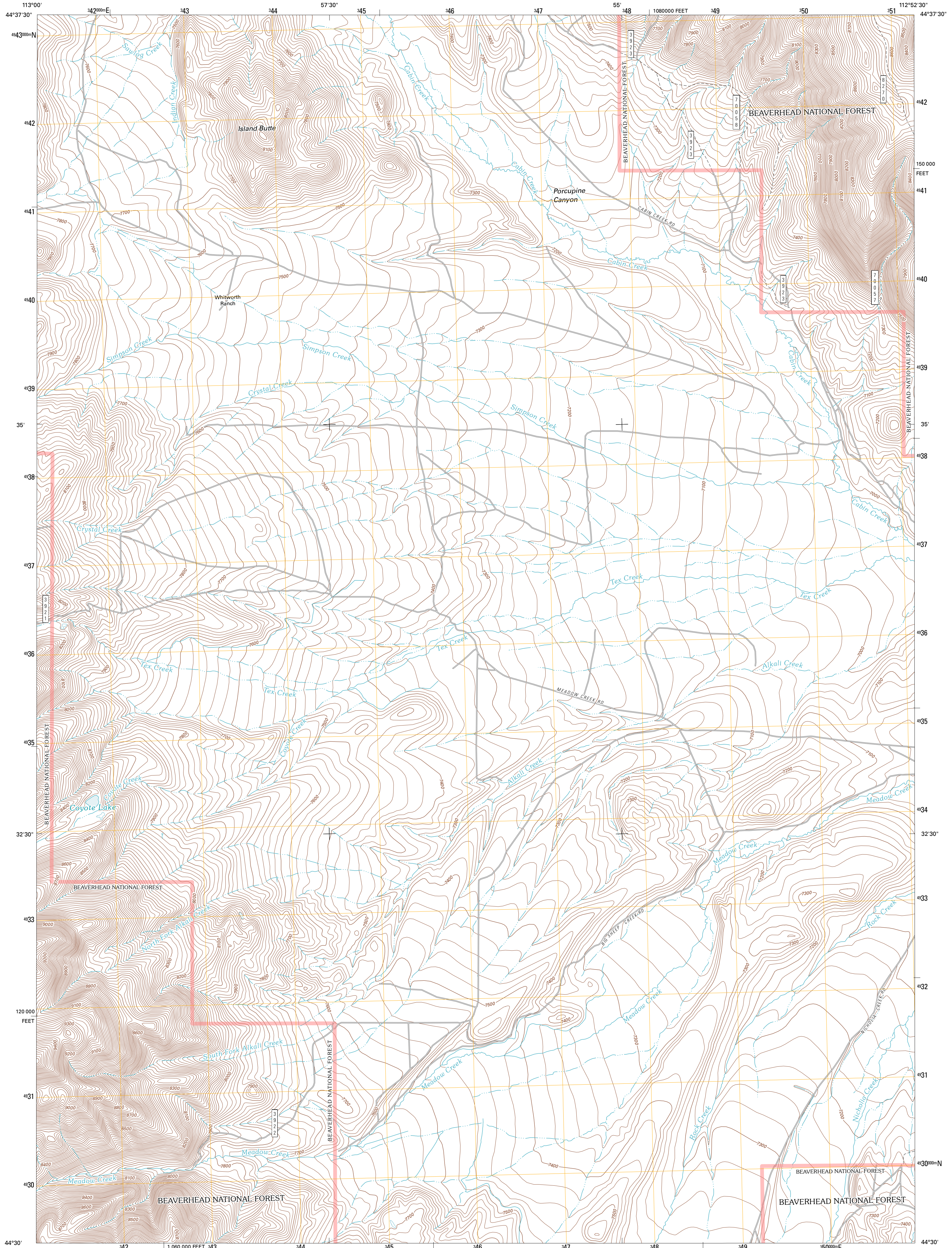




U.S. DEPARTMENT OF THE INTERIOR  
U. S. GEOLOGICAL SURVEY

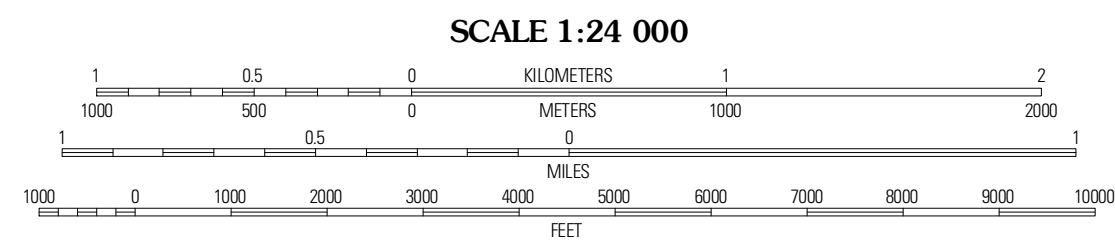
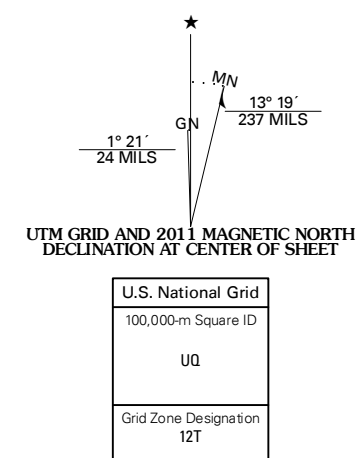


ISLAND BUTTE QUADRANGLE  
MONTANA-BEAVERHEAD CO.  
7.5-MINUTE SERIES



Produced by the United States Geological Survey  
North American Datum of 1983 (NAD83)  
World Geodetic System of 1984 (WGS84). Projection and  
1 000-meter grid: Universal Transverse Mercator, Zone 12T  
10 000-foot ticks: Montana Coordinate System of 1983

Imagery: NIP, August 2009  
Roads: 02/06-2010 Tele Atlas  
Roads within US Forest Service Lands: FSTopo Data  
with limited Forest Service updates, 2009  
Names: GNS, 2010  
Hydrography: National Hydrography Dataset, 2009  
Contours: National Elevation Dataset, 2005  
Boundaries: Census, IBWC, IBC, USGS, 1972 - 2010



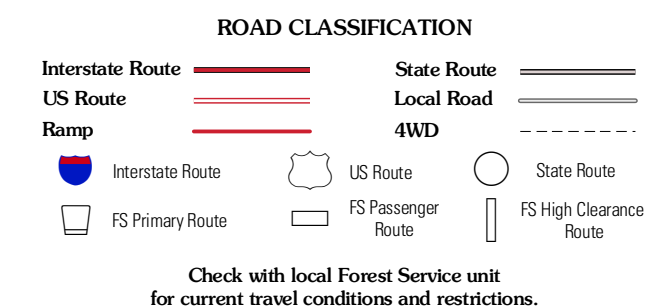
CONTOUR INTERVAL 20 FEET  
NORTH AMERICAN VERTICAL DATUM OF 1988  
This map was produced to conform with version 0.5.10  
of the USGS US Topo Product Standard.  
A metadata file associated with this product is draft version 0.5.16



QUADRANGLE LOCATION

Tepee Mountain	Graphite Mountain	Dixon Mountain
Morrison Lake	Island Butte	Caboose Canyon
Cottonwood Creek	Eightmile Peak	Dardman Lake

ADJOINING 7.5 QUADRANGLES



Check with local Forest Service unit for current travel conditions and restrictions.

ISLAND BUTTE, MT  
2011