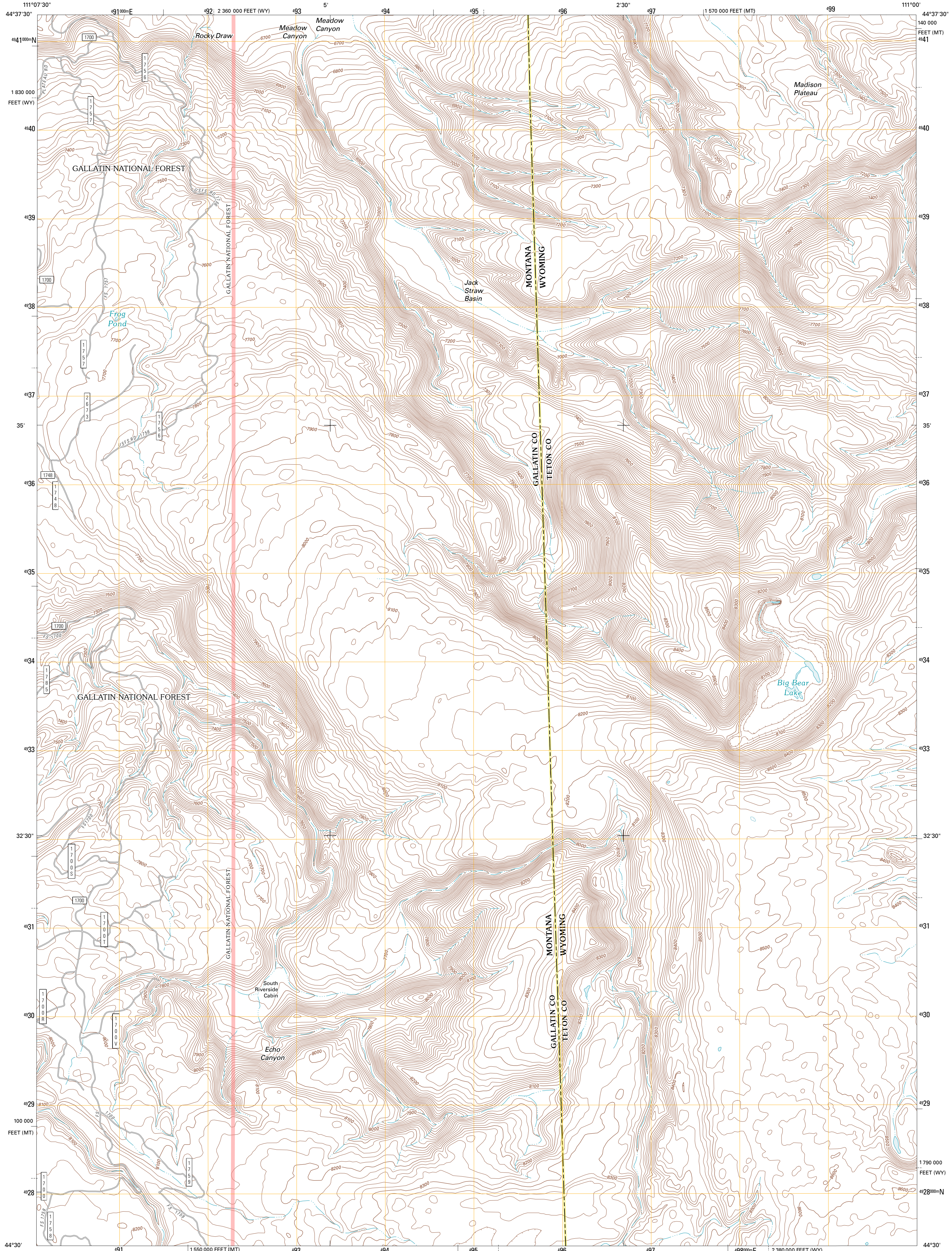




U.S. DEPARTMENT OF THE INTERIOR
U. S. GEOLOGICAL SURVEY

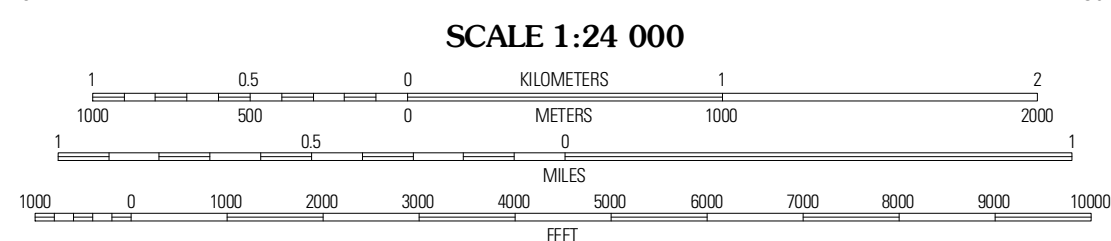
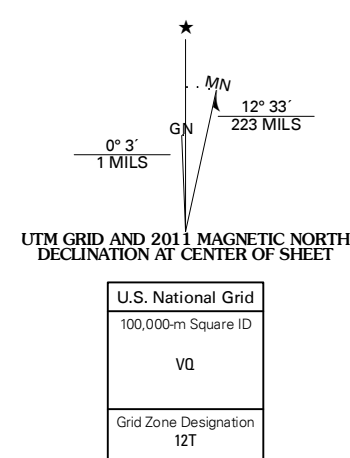


JACK STRAW BASIN QUADRANGLE
MONTANA-WYOMING
7.5-MINUTE SERIES



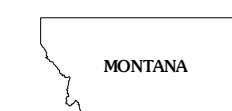
Produced by the United States Geological Survey
North American Datum of 1983 (NAD83)
World Geodetic System of 1984 (WGS84). Projection and
1 000-meter grid. Universal Transverse Mercator, Zone 12T
10 000-foot ticks: Montana Coordinate System of 1983,
Wyoming Coordinate System of 1983 (west zone)

Imagery: NADP, July 2009
Roads: 192006-2010 Tele Atlas
Roads within US Forest Service Lands: FSTopo Data
with limited Forest Service updates, 2009
Names: GNIS, 2010
Hydrography: National Hydrography Dataset, 2009
Contours: National Elevation Dataset, 1999
Boundaries: Census, IBWC, IBC, USGS, 1972 - 2010



CONTOUR INTERVAL 20 FEET
NORTH AMERICAN VERTICAL DATUM OF 1988

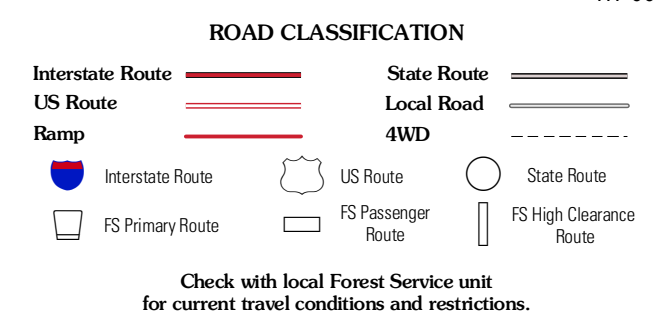
This map was produced to conform with version 0.5.10
of the USGS US Topo Product Standard.
A metadata file associated with this product is draft version 0.5.16



QUADRANGLE LOCATION

Madison Arm	West Yellowstone	Mount Jackson
Reas Pass	Jack Straw Basin	Buffalo Meadows
Latham Spring	Buffalo Lake NE	Summit Lake

ADJOINING 7.5 QUADRANGLES



JACK STRAW BASIN, MT-WY
2011