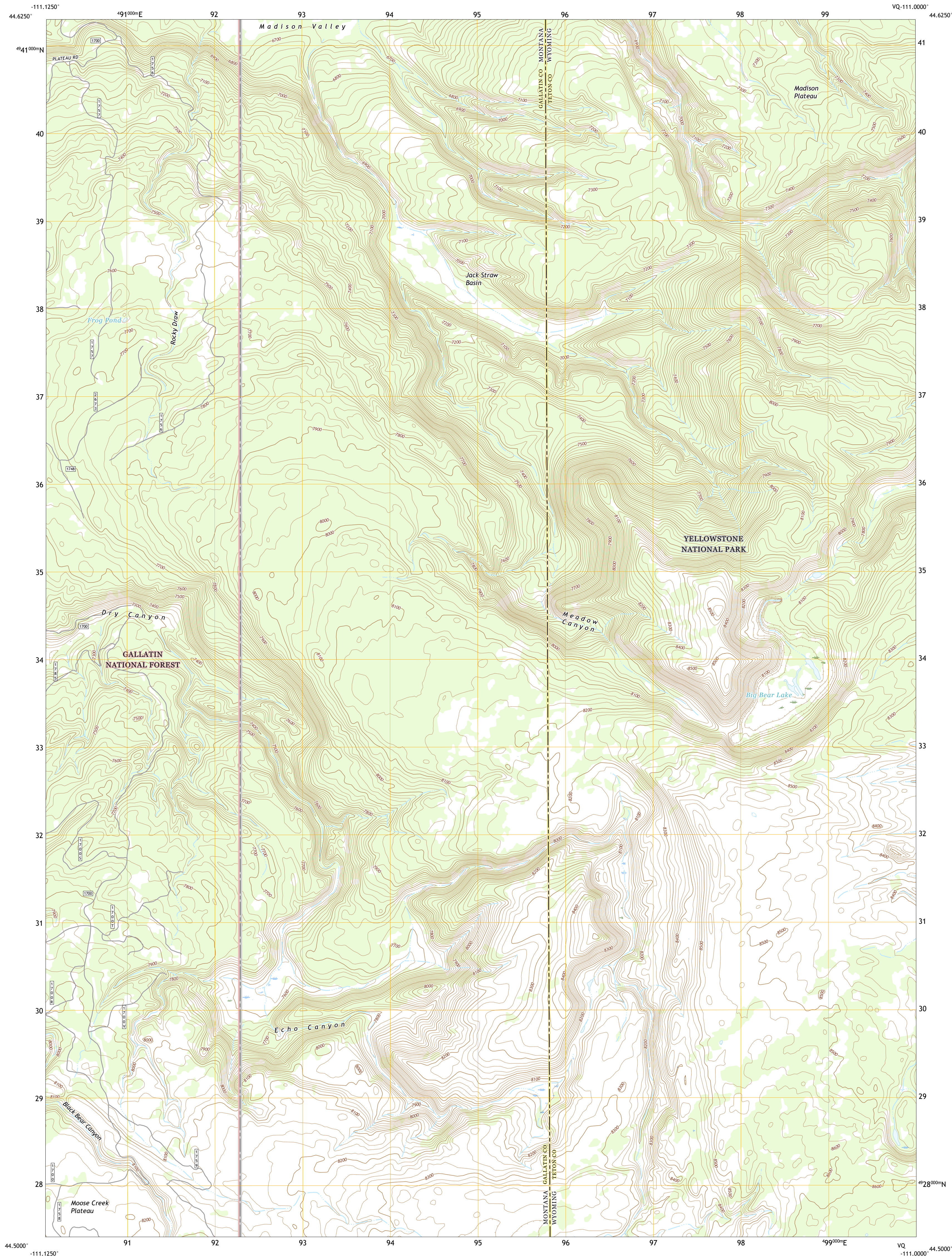




U.S. DEPARTMENT OF THE INTERIOR
U.S. GEOLOGICAL SURVEY



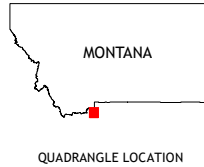
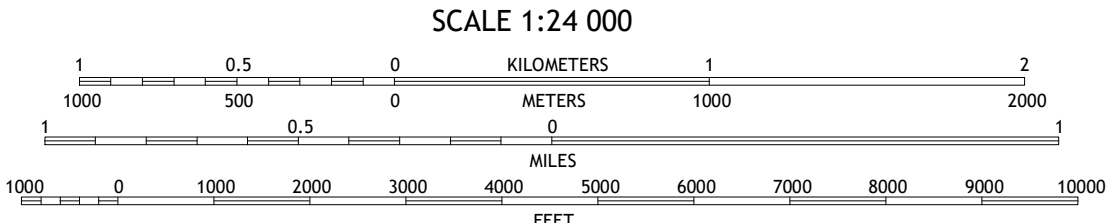
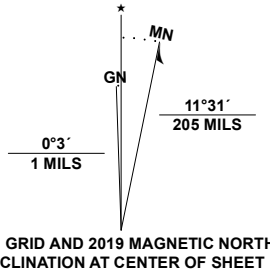
JACK STRAW BASIN QUADRANGLE
MONTANA - WYOMING
7.5-MINUTE SERIES



Produced by the United States Geological Survey

North American Datum of 1983 (NAD83)
World Geodetic System of 1984 (WGS84). Projection and
1 000-meter grid: Universal Transverse Mercator, Zone 12T
This map is not a legal document. Boundaries may be
generalized for this map scale. Private lands within government
reservations may not be shown. Obtain permission before
entering private lands.

Imagery.....NAIP, September 2015 - November 2015
Roads.....U.S. Census Bureau, 2017
Roads within US Forest Service Lands.....FSTopo Data
Names.....with limited Forest Service updates, 2013
.....GNIS, 1980 - 2017
Hydrography.....National Hydrography Dataset, 2002 - 2020
Contours.....National Elevation Dataset, 1999
Boundaries.....Multiple sources; see metadata file 2018 - 2019
Public Land Survey System.....BLM, 2017 - 2018
Wetlands.....FWS National Wetlands Inventory 1980 - 2009



1	2	3
4	5	6
7	8	9

1 Madison Arm
2 West Yellowstone
3 Mount Jackson
4 Reas Pass
5 Buffalo Meadows
6 Latham Spring
7 Buffalo Lake NE
8 Summit Lake

ROAD CLASSIFICATION	
Expressway	Local Connector
Secondary Hwy	Local Road
Ramp	4WD
Interstate Route	US Route
FS Primary Route	FS Passenger Route
	FS High Clearance Route
	State Route

Check with local Forest Service unit
for current travel conditions and restrictions.

JACK STRAW BASIN, MT, WY
2020

