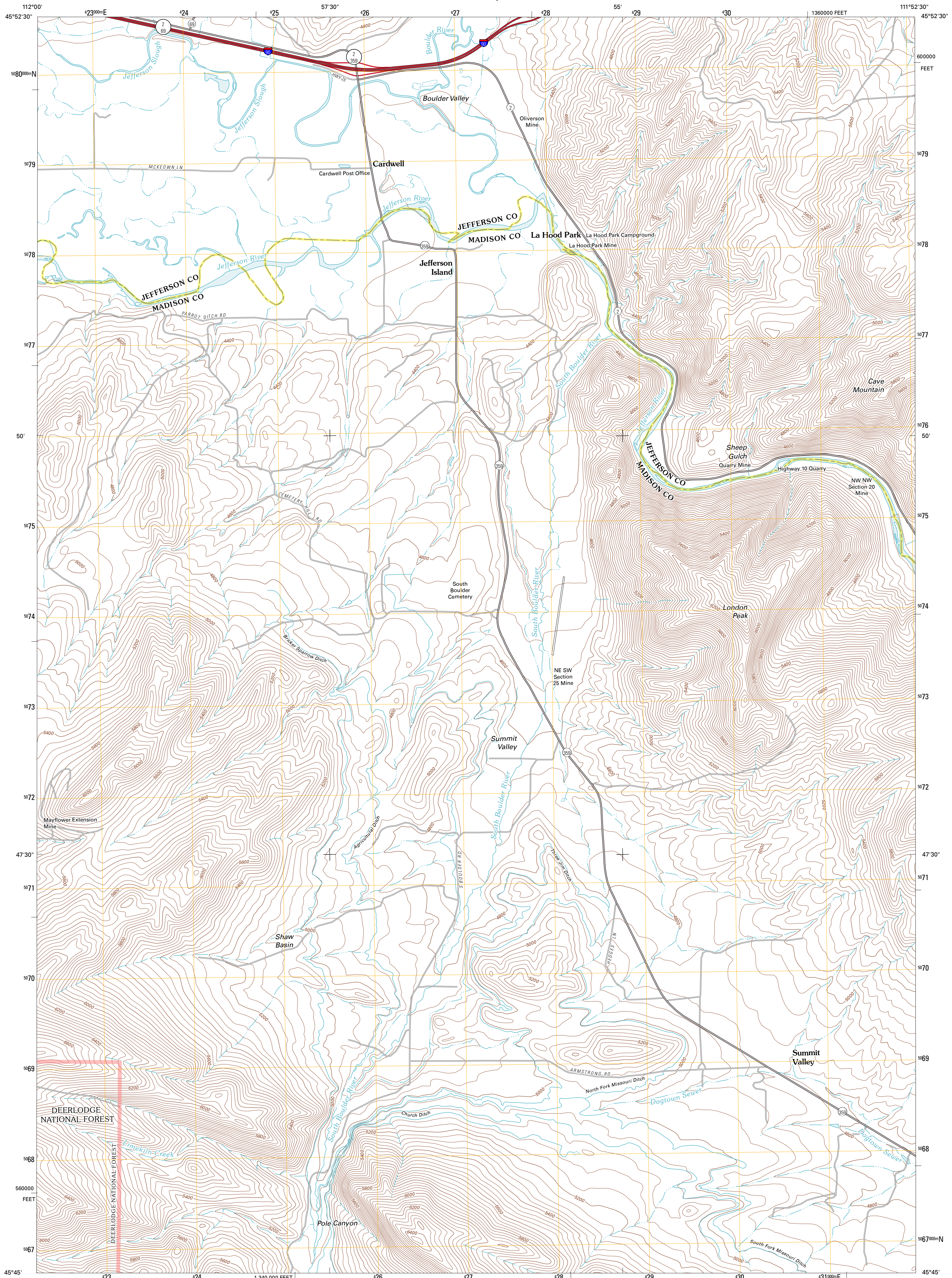




U.S. DEPARTMENT OF THE INTERIOR
U. S. GEOLOGICAL SURVEY

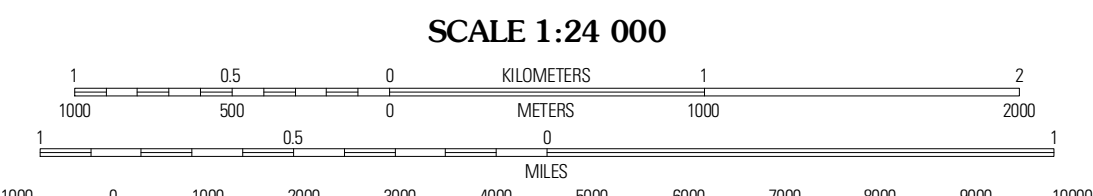
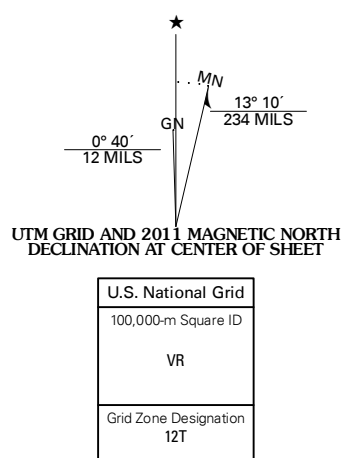


JEFFERSON ISLAND QUADRANGLE
MONTANA
7.5-MINUTE SERIES



Produced by the United States Geological Survey
North American Datum of 1983 (NAD83)
World Geodetic System of 1984 (WGS84). Projection and
1 000-meter grid: Universal Transverse Mercator, Zone 12T
10 000-foot ticks: Montana Coordinate System of 1983

Imagery: NIP, July 2009
Roads: ©2006-2010 Tele Atlas
Roads within US Forest Service Lands: FSTopo Data
with limited Forest Service updates, 2009
Names: GNIS, 2010
Hydrography: National Hydrography Dataset, 2009
Contours: National Elevation Dataset, 2006
Boundaries: Census, IBWC, IBC, USGS, 1972 - 2010



Black Butte	Deberry Mountain	Negro Hollow
Whitehall	Jefferson Island	Sappington
Marhead Mountain	Pony	Harrison

ROAD CLASSIFICATION
Interstate Route: State Route: US Route: Local Road: Ramp: 4WD: Interstate Route: US Route: State Route: FS Primary Route: FS Passenger Route: FS High Clearance Route:

Check with local Forest Service unit for current travel conditions and restrictions.

JEFFERSON ISLAND, MT
2011

CONTOUR INTERVAL 40 FEET
NORTH AMERICAN VERTICAL DATUM OF 1988
This map was produced to conform with version 0.5.10 of the USGS US Topo Product Standard.
A metadata file associated with this product is draft version 0.5.16