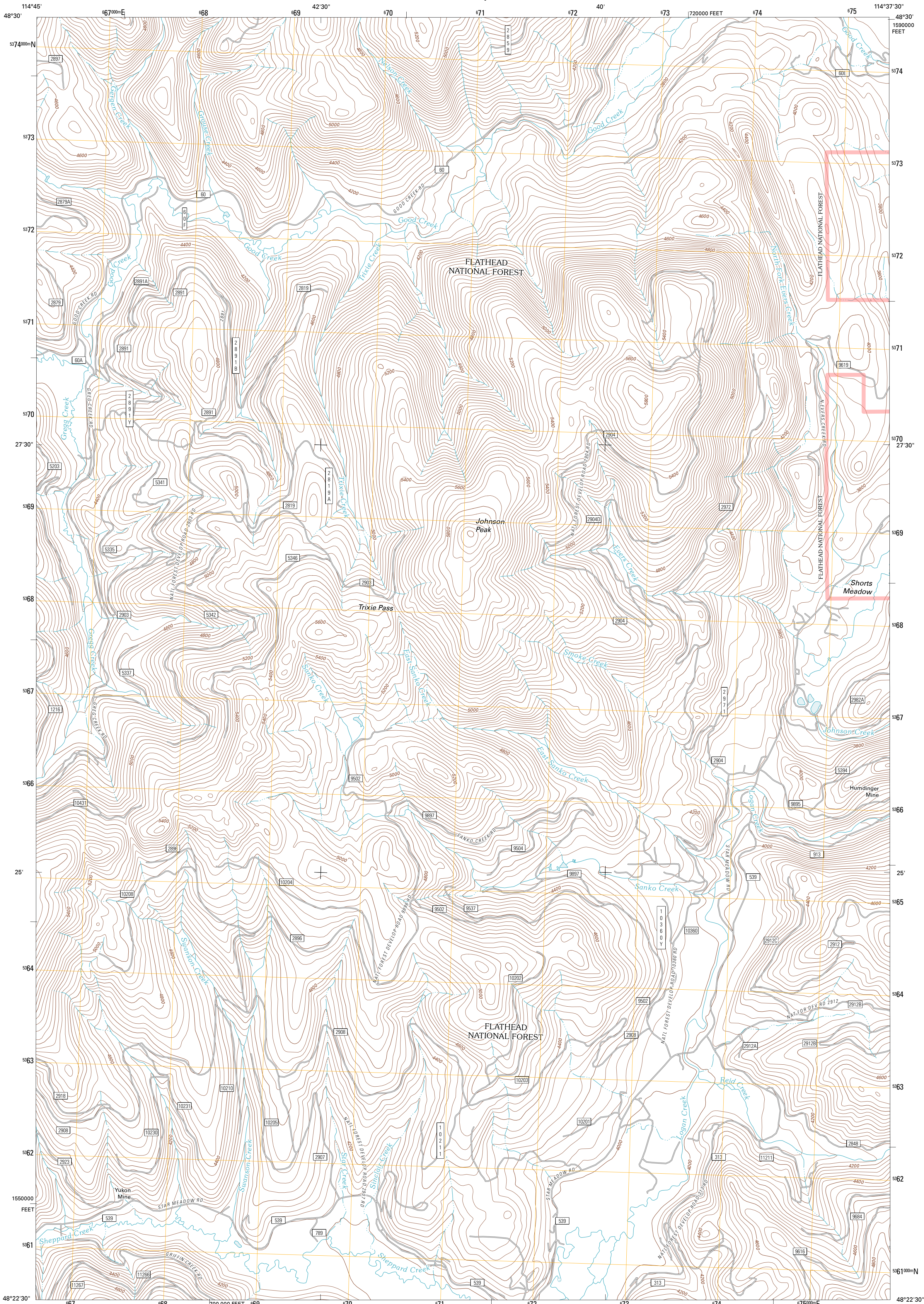




U.S. DEPARTMENT OF THE INTERIOR  
U. S. GEOLOGICAL SURVEY

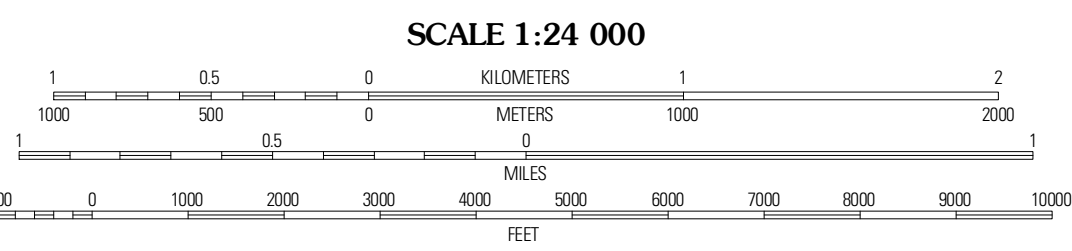
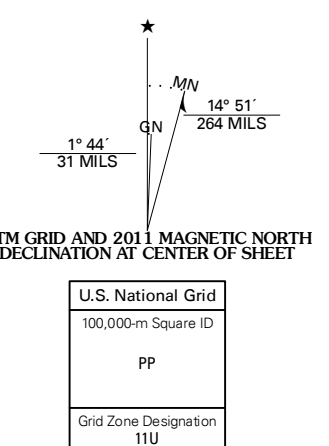


JOHNSON PEAK QUADRANGLE  
MONTANA-FLATHEAD CO.  
7.5-MINUTE SERIES

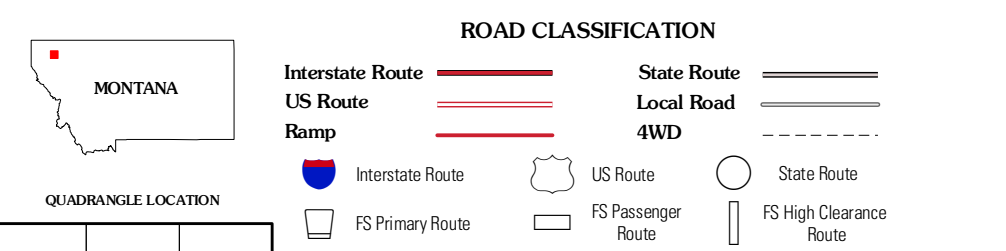


Produced by the United States Geological Survey  
North American Datum of 1983 (NAD83)  
World Geodetic System of 1984 (WGS84). Projection and  
1 000-meter grid: Universal Transverse Mercator, Zone 11U  
10 000-foot ticks: Montana Coordinate System of 1983

Imagery: NAPP, July 2009  
Roads: ©2006-2010 Tele Atlas  
Roads within US Forest Service Lands: FSTopo Data  
with limited Forest Service updates, 2009  
Names: National Hydrography Dataset, 2010  
Hydrography: National Hydrography Dataset, 2009  
Contours: National Elevation Dataset, 2005  
Boundaries: Census, IBWC, IBC, USGS, 1972 - 2010



CONTOUR INTERVAL 40 FEET  
NORTH AMERICAN VERTICAL DATUM OF 1988  
This map was produced to conform with version 0.5.10  
of the USGS US Topo Product Standard.  
A metadata file associated with this product is draft version 0.5.16



QUADRANGLE LOCATION

Sandy Mountain	Radnor	Olney
Dandridge Point	Johnson Peak	Tally Lake
Sylvia Lake	Ashley Mountain	Last Creek Divide

ADJOINING 7.5' QUADRANGLES

Check with local Forest Service unit  
for current travel conditions and restrictions.

JOHNSON PEAK, MT  
2011