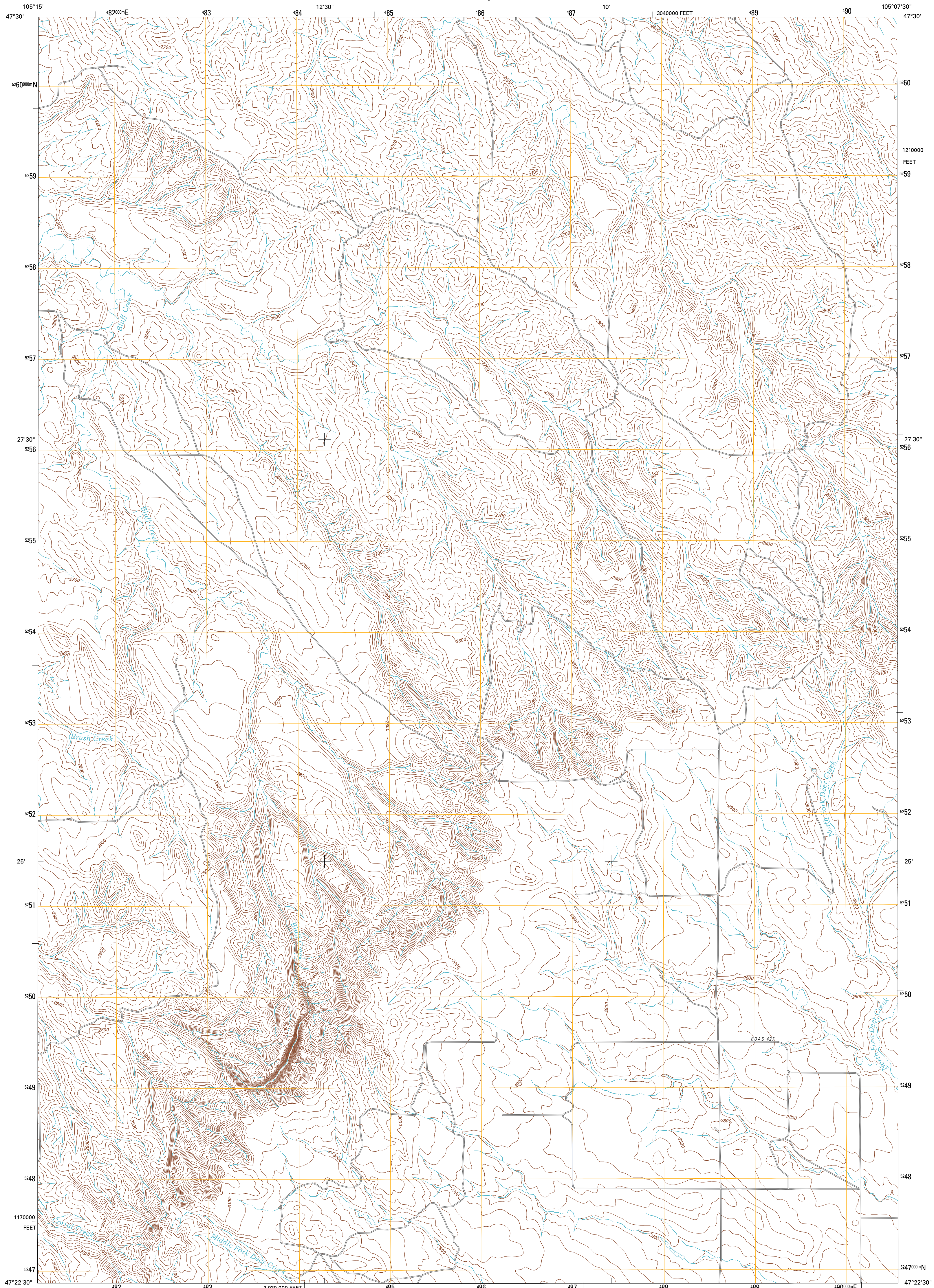




U.S. DEPARTMENT OF THE INTERIOR
U. S. GEOLOGICAL SURVEY

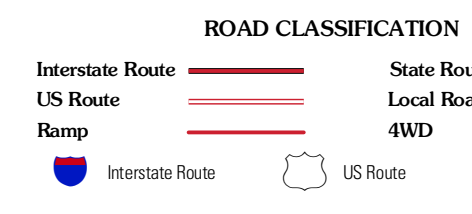
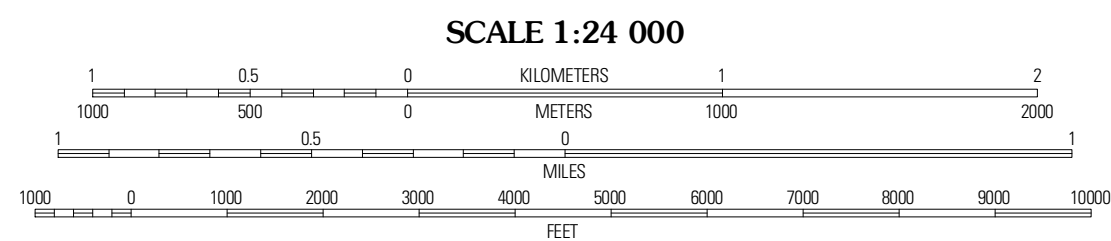
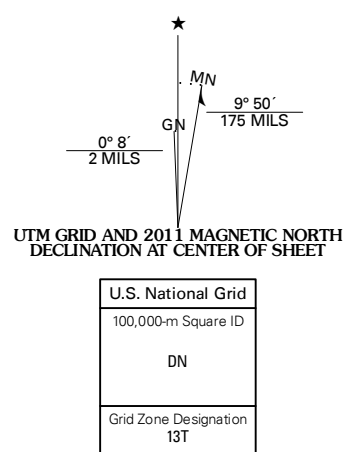


JOHNSON RESERVOIR NW QUADRANGLE
MONTANA-DAWSON CO.
7.5-MINUTE SERIES



Produced by the United States Geological Survey
North American Datum of 1983 (NAD83)
World Geodetic System of 1984 (WGS84). Projection and
1 000-meter grid: Universal Transverse Mercator, Zone 13T
10 000-foot ticks: Montana Coordinate System of 1983

Imagery.....NAIP, August 2009
Roads.....©2006-2010 Tele Atlas
Names.....©2006-2010 Tele Atlas
Hydrography.....National Hydrography Dataset, 2009
Contours.....National Elevation Dataset, 2009
Boundaries.....Census, IBWC, IBC, USGS, 1972 - 2010



QUADRANGLE LOCATION

Buffalo Creek SE	Circle Reservoir	Richy SE
Olson Creek North	Johnson Reservoir NW	Johnson Reservoir NE
Olson Creek South	Deer Creek Church	Johnson Reservoir

ADJOINING 7.5' QUADRANGLES

CONTOUR INTERVAL 20 FEET
NORTH AMERICAN VERTICAL DATUM OF 1988

This map was produced to conform with version 0.5.10
of the USGS US Topo Product Standard.
A metadata file associated with this product is draft version 0.5.16

JOHNSON RESERVOIR NW, MT
2011