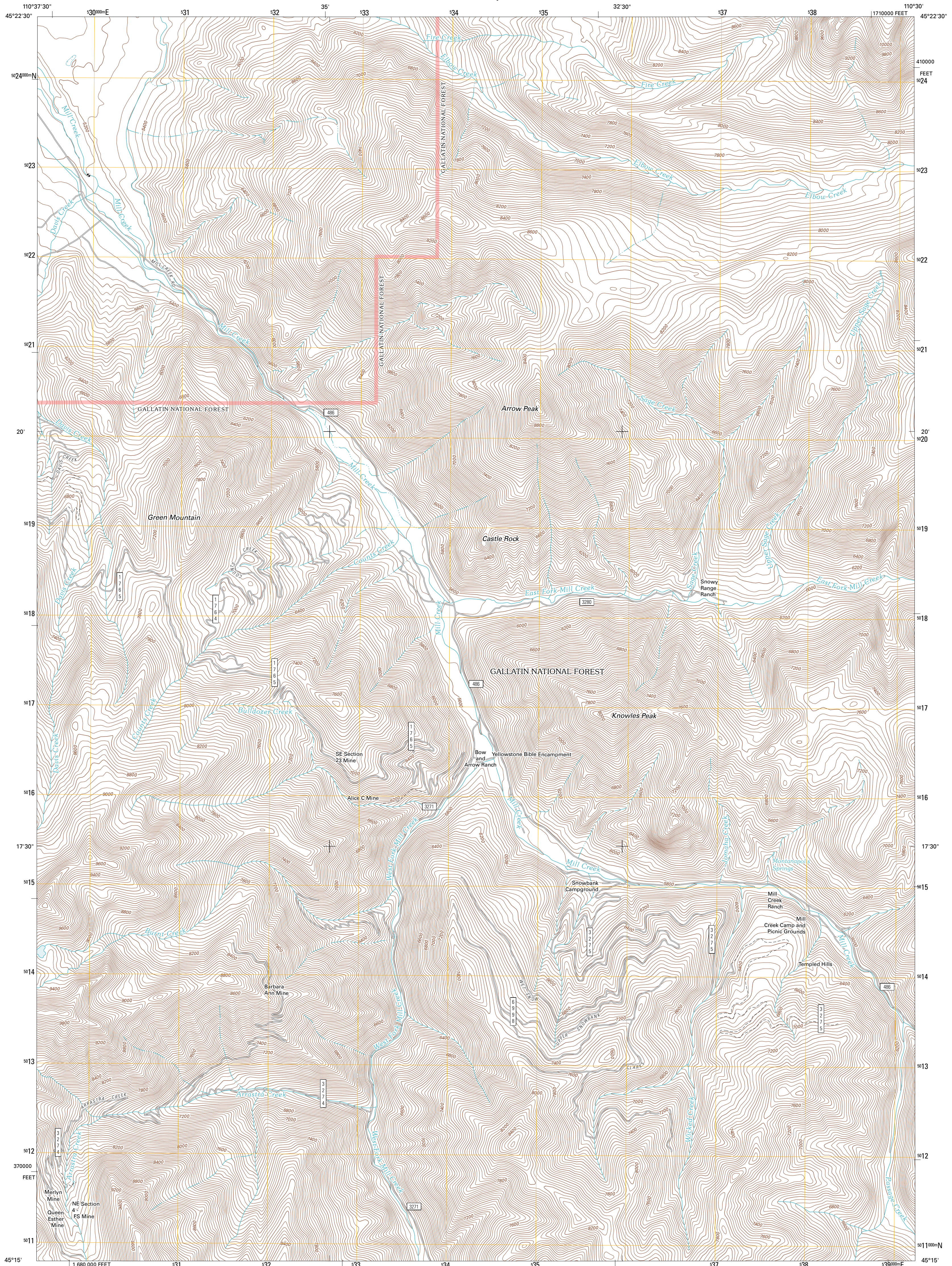




U.S. DEPARTMENT OF THE INTERIOR
U. S. GEOLOGICAL SURVEY

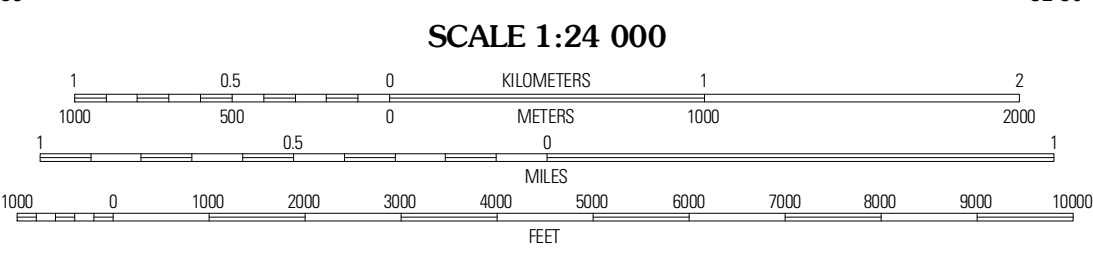
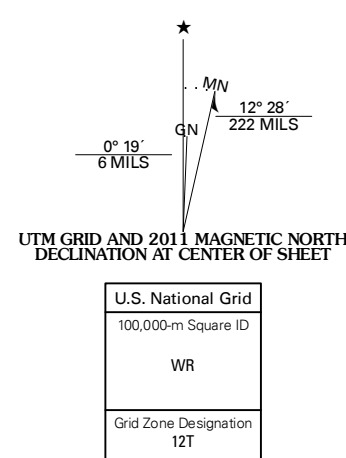


KNOWLES PEAK QUADRANGLE
MONTANA-PARK CO.
7.5-MINUTE SERIES

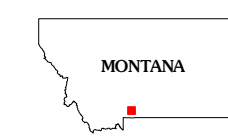


Produced by the United States Geological Survey
North American Datum of 1983 (NAD83)
Roads.....©2006-2010 Title Atlas
World Geodetic System of 1984 (WGS84). Projection and
1 000 meter grid: Universal Transverse Mercator, Zone 12T
10 000-foot ticks: Montana Coordinate System of 1983

Imagery.....NAD, July 2009
Roads.....©2006-2010 Title Atlas
Roads within US Forest Service Lands.....FSTopo Data
with limited Forest Service updates, 2009
Names.....National Hydrography Dataset, 2009
Contours.....National Elevation Dataset, 2001
Boundaries.....Census, IBWC, IBC, USGS, 1972 - 2010



CONTOUR INTERVAL 40 FEET
NORTH AMERICAN VERTICAL DATUM OF 1988
This map was produced to conform with version 0.5.10
of the USGS US Topo Product Standard.
A metadata file associated with this product is draft version 0.5.16



QUADRANGLE LOCATION

Pray	Dexter Point	Mount Cowen
Emigrant	Knowles Peak	The Pyramid
Monitor Peak	Mineral Mountain	Mount Wallace

ROAD CLASSIFICATION
Interstate Route
US Route
Ramp
State Route
Local Road
4WD
US Route
FS Passenger Route
FS Primary Route
FS High Clearance Route

Check with local Forest Service unit for current travel conditions and restrictions.

KNOWLES PEAK, MT
2011

ADJOINING 7.5 QUADRANGLES