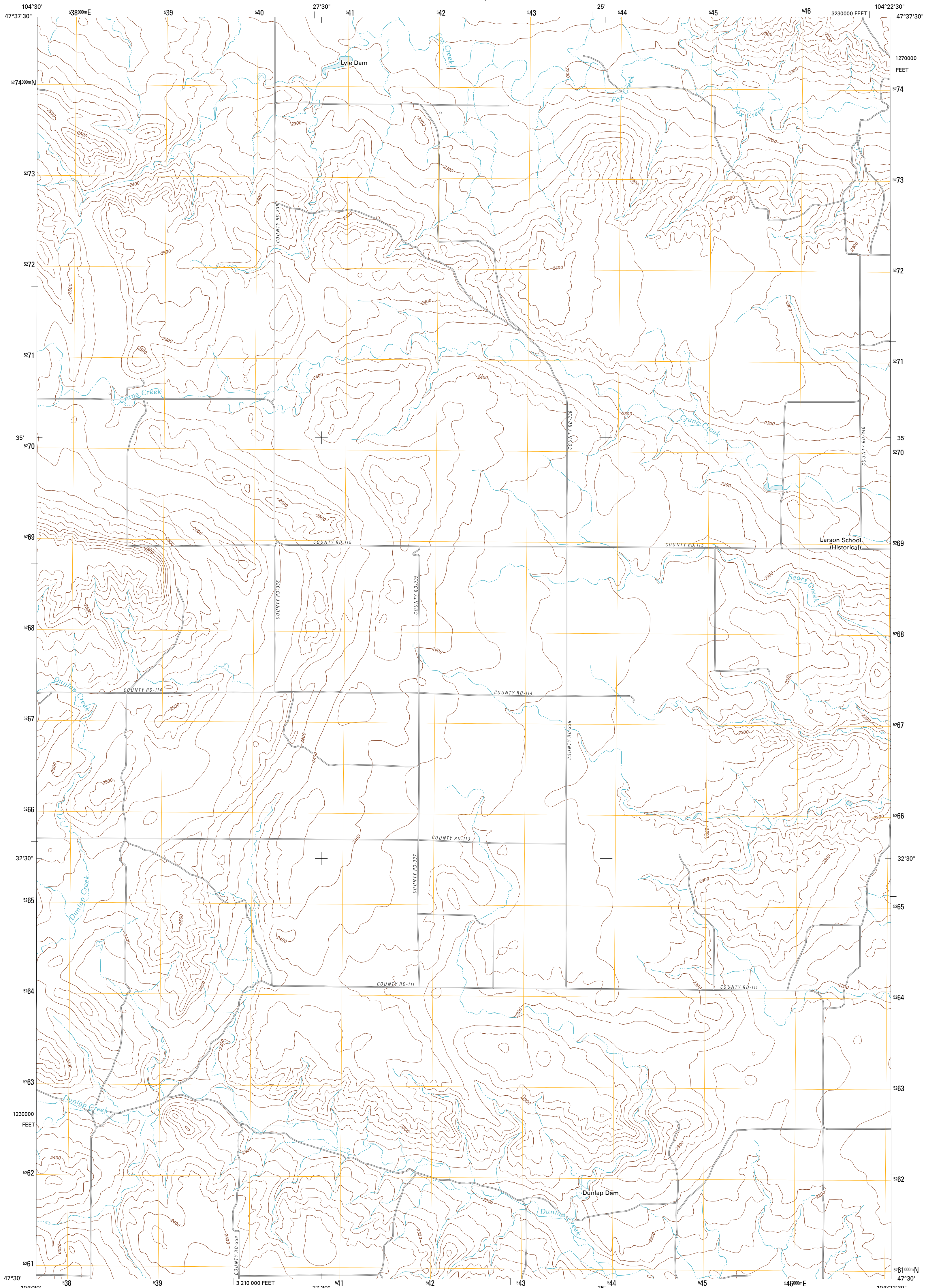




U.S. DEPARTMENT OF THE INTERIOR
U. S. GEOLOGICAL SURVEY



LARSON SCHOOL QUADRANGLE
MONTANA-RICHLAND CO.
7.5-MINUTE SERIES

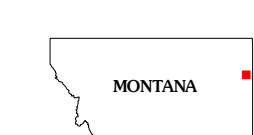
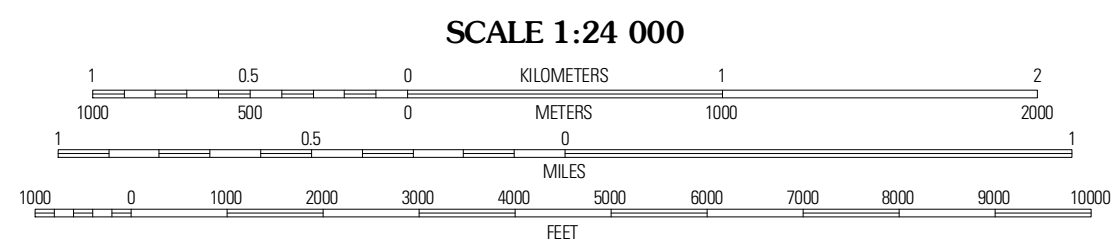


Produced by the United States Geological Survey
North American Datum of 1983 (NAD83)
World Geodetic System of 1984 (WGS84). Projection and
1 000-meter grid: Universal Transverse Mercator, Zone 13T
10 000-foot ticks: Montana Coordinate System of 1983

Imagery.....NAIP, July 2009
Roads.....©2006-2010 Tele Atlas
Names.....©2006-2010 Tele Atlas
Hydrography.....National Hydrography Dataset, 2009
Contours.....National Elevation Dataset, 2009
Boundaries.....Census, IBWC, IBC, USGS, 1972 - 2010

UTM GRID AND 2011 MAGNETIC NORTH
DECLINATION AT CENTER OF SHEET

U.S. National Grid	12° 21'
EN	7 MILS
Grid Zone Designation	13T



ROAD CLASSIFICATION

Interstate Route	State Route
US Route	Local Road
Ramp	4WD

● Interstate Route
 US Route
 State Route

ADJOINING 7.5' QUADRANGLES

Lambert	Crane NW	Crane NE
McCone Heights	Larson School	Crane
Allard Ranch	Knife River Mine	Swage

CONTOUR INTERVAL 20 FEET
NORTH AMERICAN VERTICAL DATUM OF 1988

This map was produced to conform with version 0.5.10
of the USGS US Topo Product Standard.
A metadata file associated with this product is draft version 0.5.16

LARSON SCHOOL, MT
2011