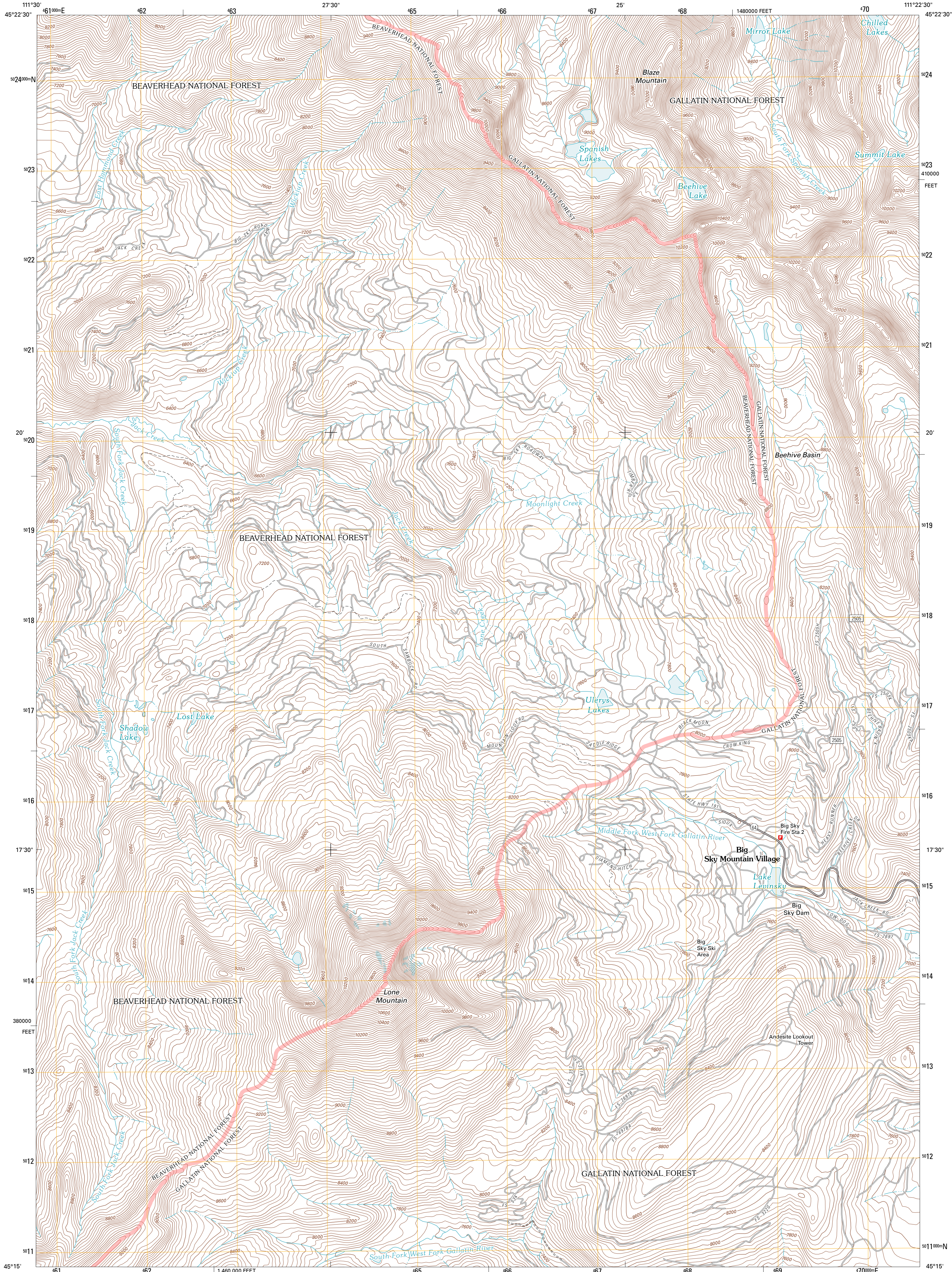




U.S. DEPARTMENT OF THE INTERIOR
U. S. GEOLOGICAL SURVEY

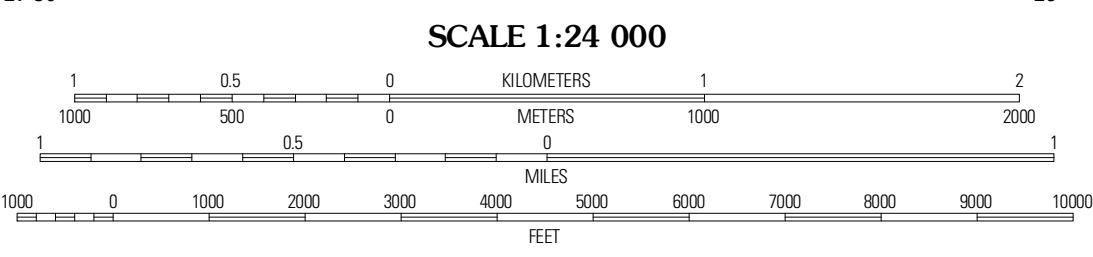
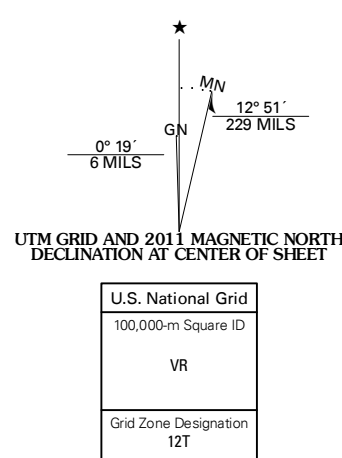


LONE MOUNTAIN QUADRANGLE
MONTANA-MADISON CO.
7.5-MINUTE SERIES



Produced by the United States Geological Survey
North American Datum of 1983 (NAD83)
World Geodetic System of 1984 (WGS84). Projection and
1 000 meter grid: Universal Transverse Mercator, Zone 12T
10 000-foot ticks: Montana Coordinate System of 1983

Imagery:.....NAIP, June 2009 - July 2009
Roads:.....©2006-2010 Tele Atlas
Roads within US Forest Service Lands:.....FSTopo Data
with limited Forest Service updates, 2009
Names:.....National Hydrography Dataset, 2009
Hydrography:.....National Hydrography Dataset, 2009
Contours:.....National Elevation Dataset, 1999
Boundaries:.....Census, IBWC, IBC, USGS, 1972 - 2010



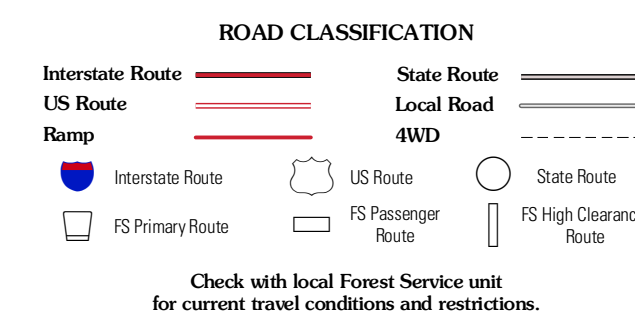
CONTOUR INTERVAL 40 FEET
NORTH AMERICAN VERTICAL DATUM OF 1988
This map was produced to conform with version 0.5.10
of the USGS US Topo Product Standard.
A metadata file associated with this product is draft version 0.5.16



QUADRANGLE LOCATION

Cherry Lake	Willow Swamp	Bacon Point
Fan Mountain	Lone Mountain	Gallatin Peak
Lake Cameron	Sphinx Mountain	Ousel Falls

ADJOINING 7.5' QUADRANGLES



LONE MOUNTAIN, MT
2011