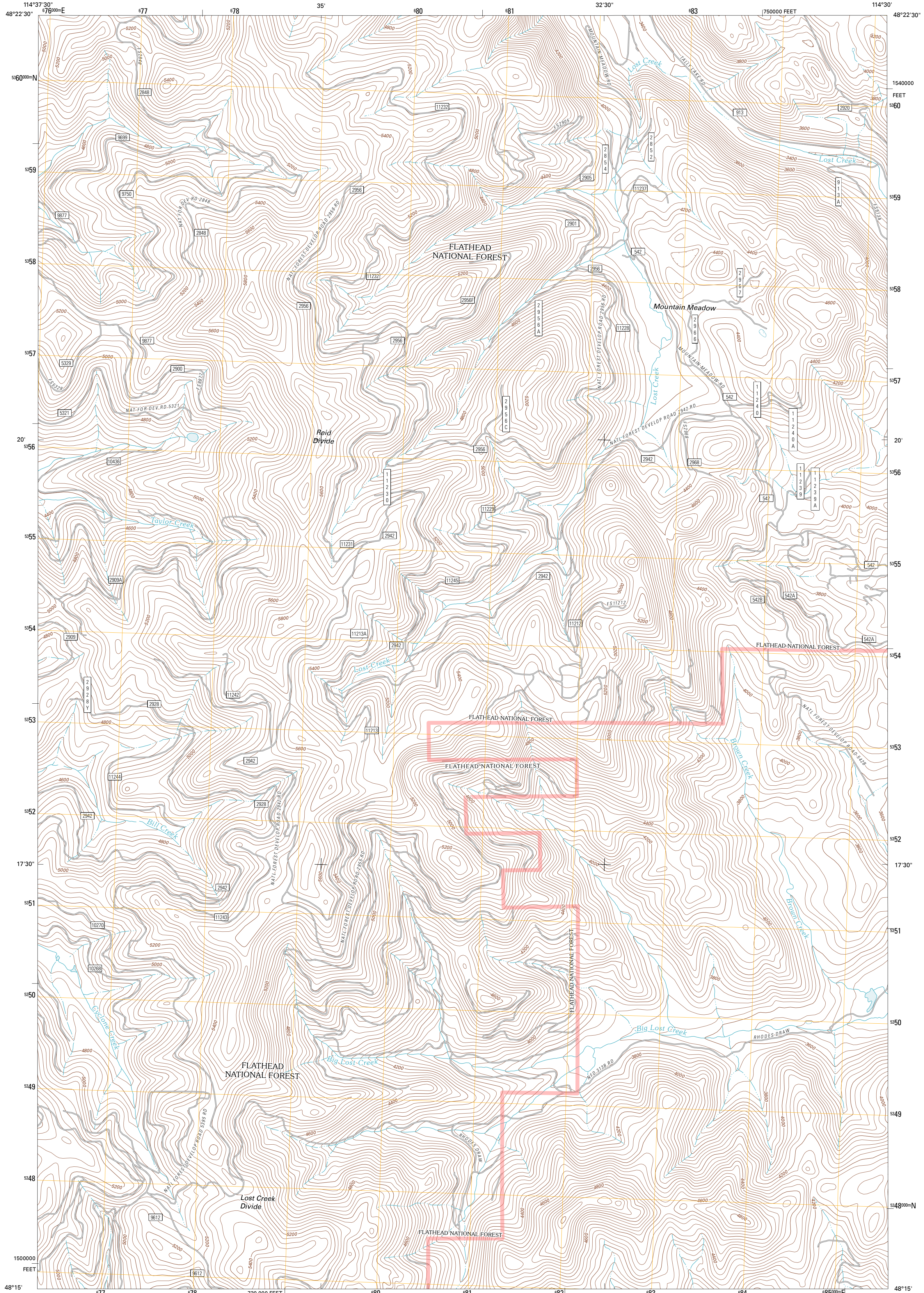




U.S. DEPARTMENT OF THE INTERIOR
U. S. GEOLOGICAL SURVEY

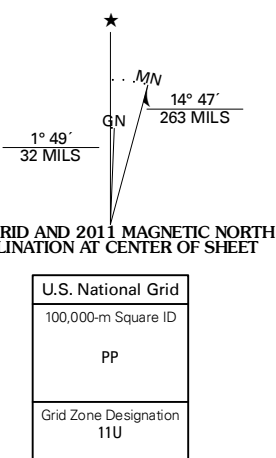


LOST CREEK DIVIDE QUADRANGLE
MONTANA-FLATHEAD CO.
7.5-MINUTE SERIES

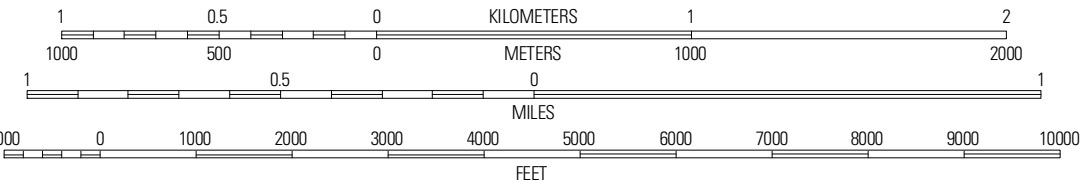


Produced by the United States Geological Survey
North American Datum of 1983 (NAD83)
World Geodetic System of 1984 (WGS84). Projection and
1,000-meter grid: Universal Transverse Mercator, Zone 11U
10,000-foot ticks: Montana Coordinate System of 1983

Imagery.....NAP, July 2009
Roads.....62006-2010 Tele Atlas
Roads within US Forest Service Lands.....FSTopo Data
with limited Forest Service updates, 2009
Names.....GNIS, 2010
Hydrography.....National Hydrography Dataset, 2009
Contours.....National Elevation Dataset, 2005
Boundaries.....Census, IBWC, IBC, USGS, 1972 - 2010

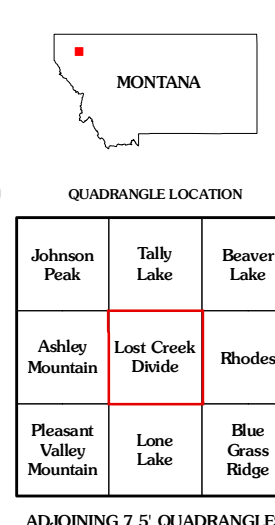


SCALE 1:24 000

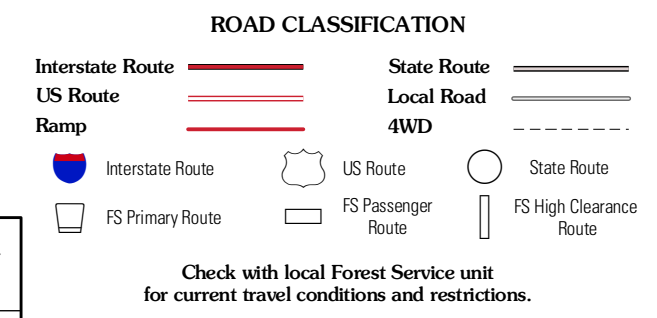


CONTOUR INTERVAL 40 FEET
NORTH AMERICAN VERTICAL DATUM OF 1988

This map was produced to conform with version 0.5.10
of the USGS US Topo Product Standard.
A metadata file associated with this product is draft version 0.5.16



Johnson Peak	Tally Lake	Beaver Lake
Ashley Mountain	Lost Creek Divide	Rhodes
Pleasant Valley Mountain	Lone Lake	Blue Grass Ridge



Check with local Forest Service unit
for current travel conditions and restrictions.

LOST CREEK DIVIDE, MT
2011

ADJOINING 7.5' QUADRANGLES