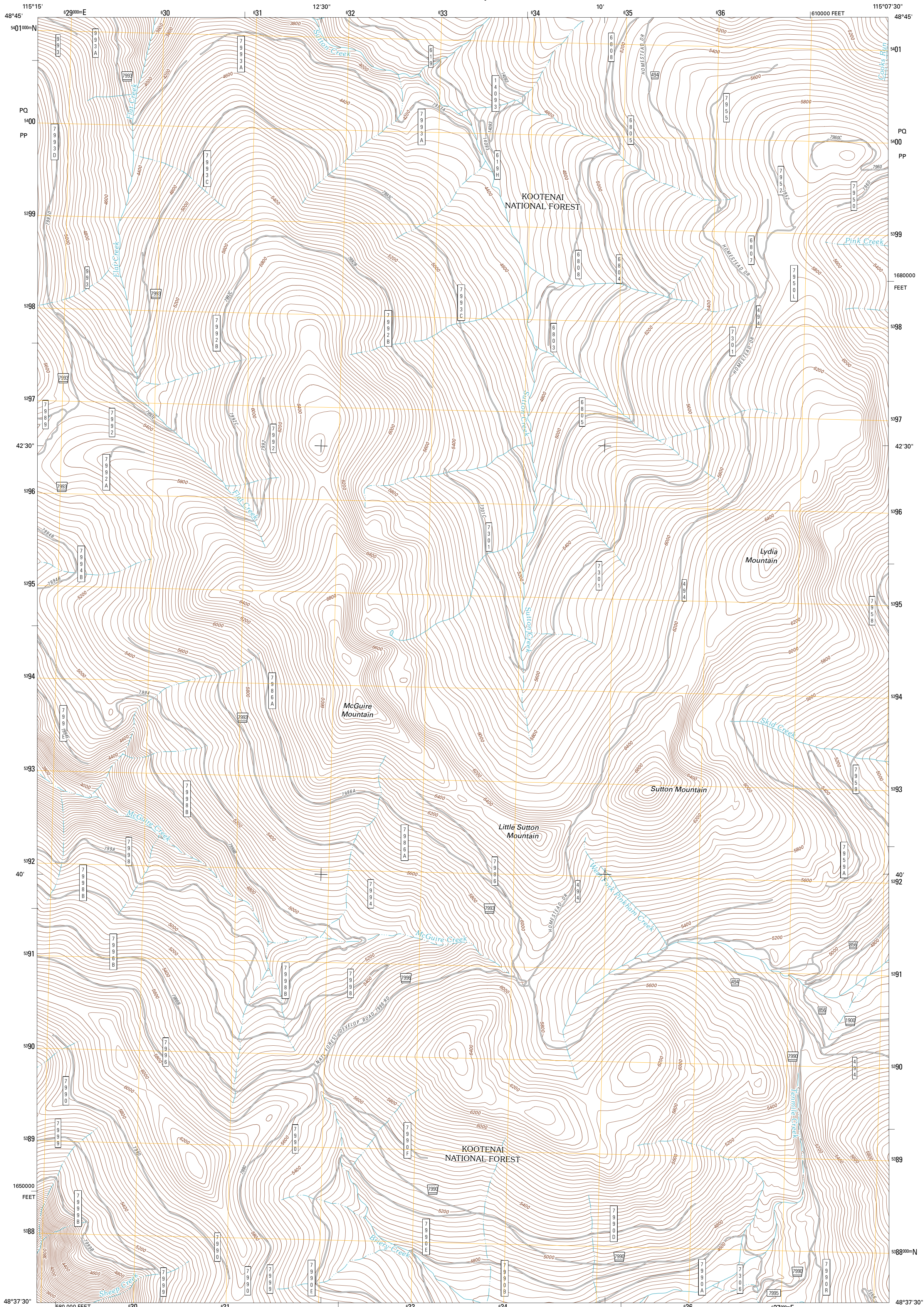




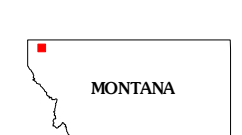
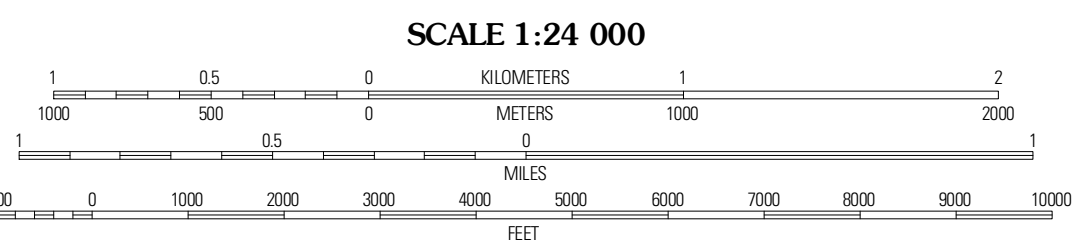
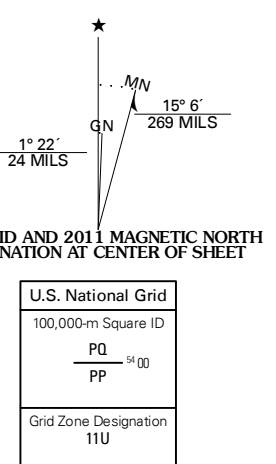
U.S. DEPARTMENT OF THE INTERIOR
U. S. GEOLOGICAL SURVEY



MCGUIRE MOUNTAIN QUADRANGLE
MONTANA-LINCOLN CO.
7.5-MINUTE SERIES



Produced by the United States Geological Survey
North American Datum of 1983 (NAD83)
Roads:.....2006-2010 Tele Atlas
World Geospatial Information, 2009
with limited Forest Service updates, 2009
Names:.....National Hydrography Dataset, 2010
Hydrography:.....National Hydrography Dataset, 2009
Contours:.....National Elevation Dataset, 2006
Boundaries:.....Census, IBWC, IBC, USGS, 1972 - 2010



ROAD CLASSIFICATION

Interstate Route	State Route
US Route	Local Road
Route	4WD

Interstate Route
 US Route
 FS Passenger Route
 State Route
 FS High Clearance Route

Check with local Forest Service unit for current travel conditions and restrictions.

QUADRANGLE LOCATION

Wabik Mountain	Beartrap Mountain	Eureka South
Inch Mountain	McGuire Mountain	Flankham Mountain
Uval Creek	Vokour Gakh	Davis Mountain

ADJOINING 7.5 QUADRANGLES

MCGUIRE MOUNTAIN, MT
2011

CONTOUR INTERVAL 40 FEET
NORTH AMERICAN VERTICAL DATUM OF 1988

This map was produced to conform with version 0.5.10 of the USGS US Topo Product Standard. A metadata file associated with this product is draft version 0.5.16