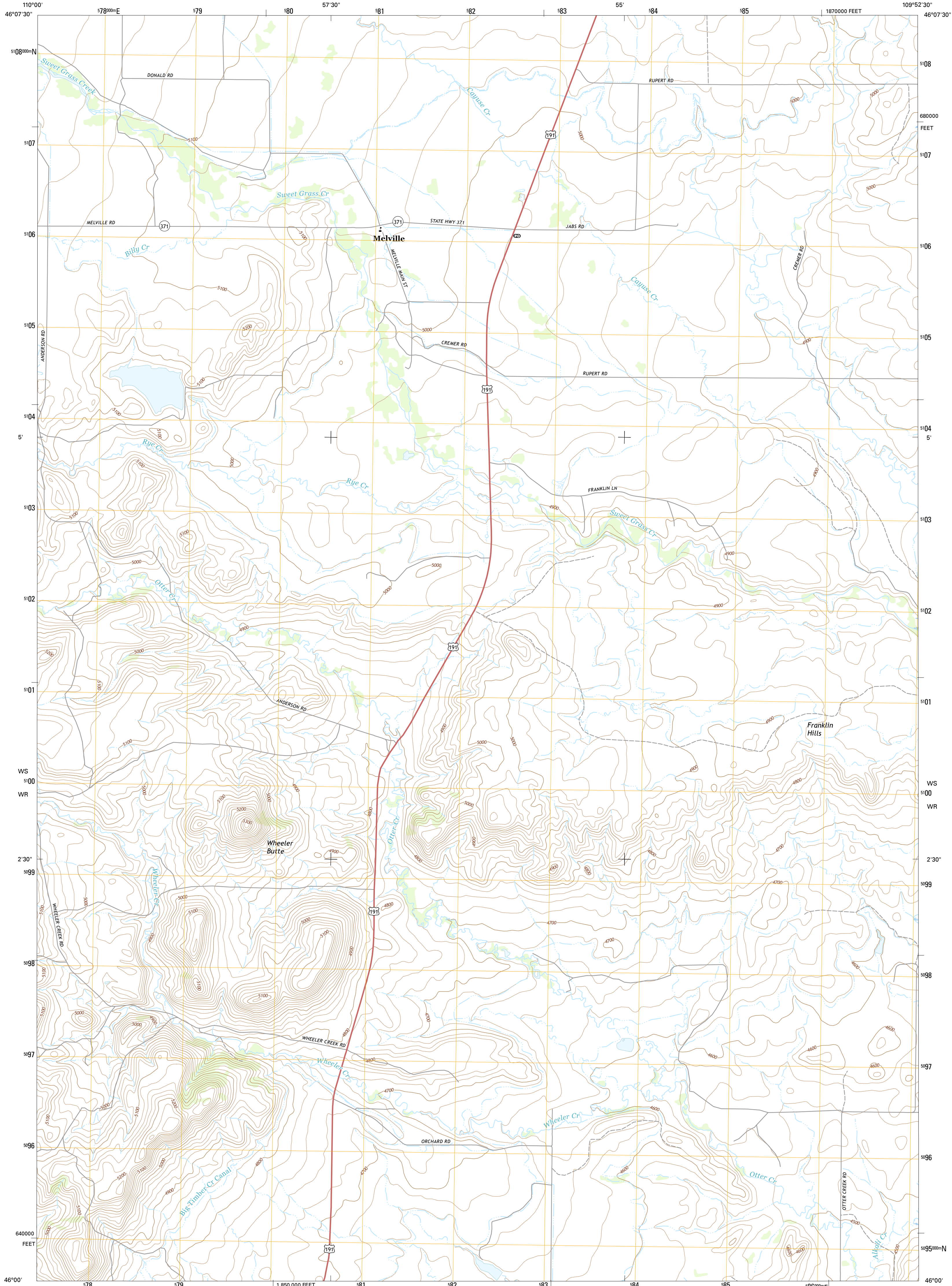




U.S. DEPARTMENT OF THE INTERIOR
U.S. GEOLOGICAL SURVEY



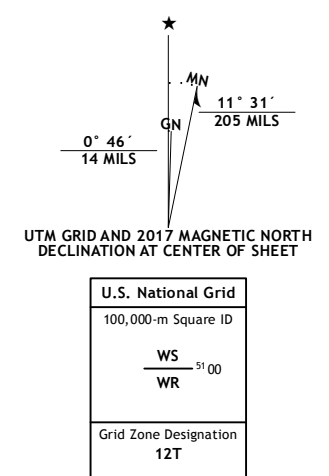
MELVILLE QUADRANGLE
MONTANA-SWEET GRASS CO.
7.5-MINUTE SERIES



Produced by the United States Geological Survey
North American Datum of 1983 (NAD83)
World Geodetic System of 1984 (WGS84). Projection and
1 000-meter grid: Universal Transverse Mercator, Zone 12T
10 000-foot ticks: Montana Coordinate System of 1983

This map is not a legal document. Boundaries may be
generalized for this map scale. Private lands within government
reservations may not be shown. Obtain permission before
entering private lands.

Imagery.....N.A.P., November 2015
Roads.....U.S. Census Bureau, 2015 - 2016
Names.....National Hydrography Dataset, 2015
Hydrography.....National Elevation Dataset, 2006
Contours.....Multiple sources; see metadata file 1972 - 2016
Boundaries.....BLM, 2016
Public Land Survey System.....BLM, 2016
Wetlands.....FWS National Wetlands Inventory 1977 - 2014



ROAD CLASSIFICATION

Expressway	Local Connector
Secondary Hwy	Local Road
Ramp	4WD
Interstate Route	US Route
	State Route

ADJOINING QUADRANGLES

1	2	3
4	5	
6	7	8

1 Porcupine Butte
2 Melville NW
3 Gougley Creek
4 Battleship Butte
5 Upper Glaston Lake
6 Grosfield Ranch
7 Otter Creek School
8 Ryan Creek

MELVILLE, MT
2017

