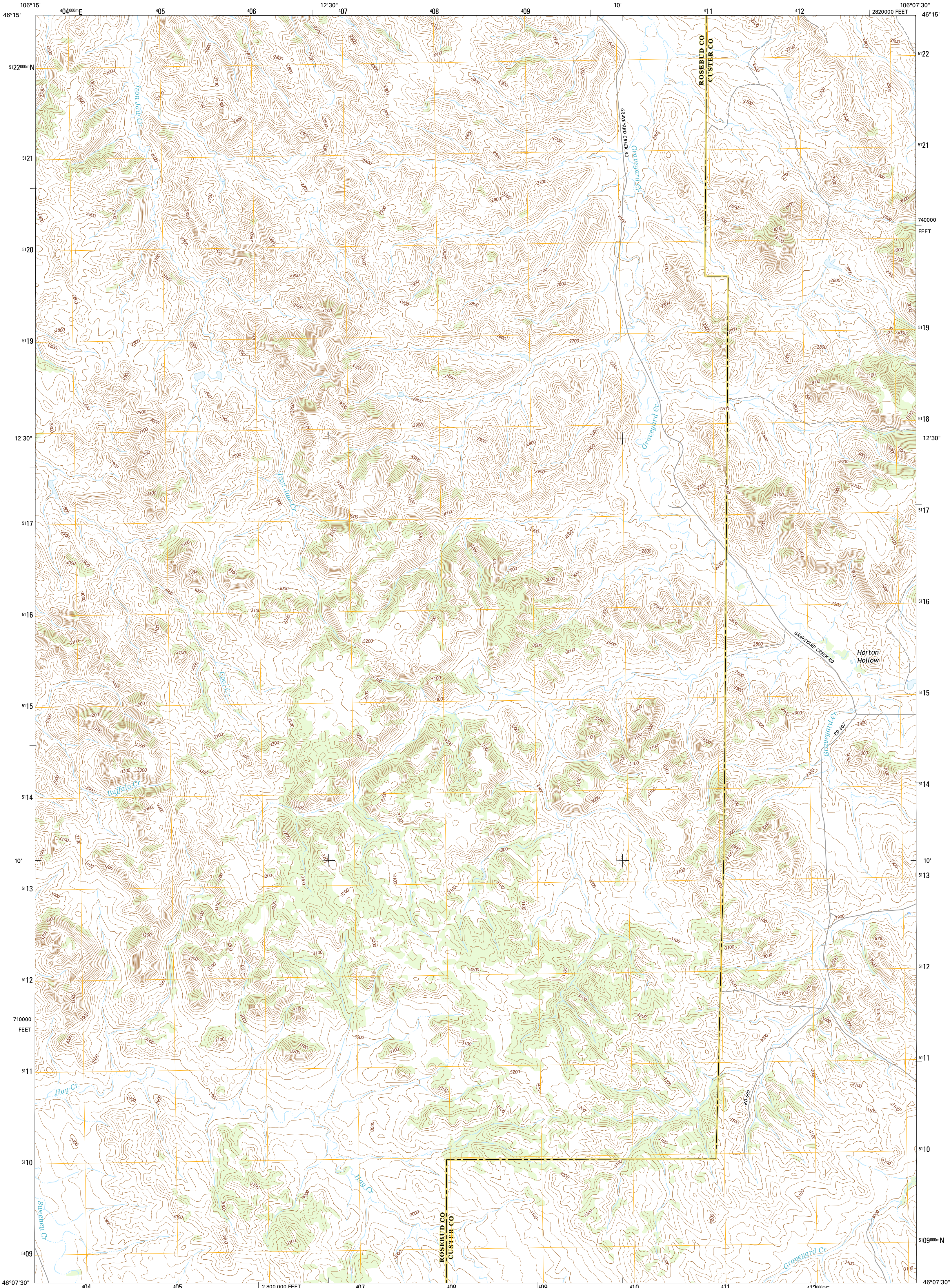




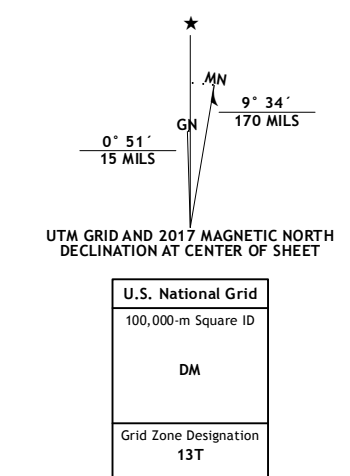
U.S. DEPARTMENT OF THE INTERIOR
U.S. GEOLOGICAL SURVEY



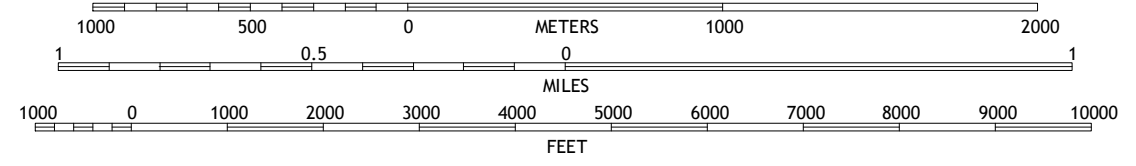
MILLER CREEK NW QUADRANGLE
MONTANA
7.5-MINUTE SERIES



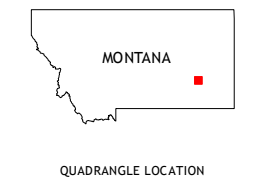
Produced by the United States Geological Survey
North American Datum of 1983 (NAD83)
World Geodetic System of 1984 (WGS84), Projection and 1 000-meter grid: Universal Transverse Mercator, Zone 13T
10 000-foot ticks: Montana Coordinate System of 1983
This map is not a legal document. Boundaries may be generalized for this map scale. Private lands within government reservations may not be shown. Obtain permission before entering private lands.



SCALE 1:24 000



CONTOUR INTERVAL 20 FEET
NORTH AMERICAN VERTICAL DATUM OF 1988
This map was produced to conform with the National Geospatial Program US Topo Product Standard, 2011. A metadata file associated with this product is draft version 0.6.19



1	2	3	1 Thurlow
4	5	5	2 Hathaway
6	7	8	3 Horton
			4 Indian Creek
			5 Moon Creek School
			6 Crain Place
			7 Miller Creek SW
			8 Miller Creek

ADJOINING QUADRANGLES

ROAD CLASSIFICATION

Expressway ———
Secondary Hwy ———
Ramp ———

Local Connector ———
Local Road ———
4WD ———
US Route ———
State Route ———

Legend symbols for road types: a thick red line for Expressway, a red line for Secondary Hwy, a blue line for Ramp, a thin red line for Local Connector, a thin red line for Local Road, a red line with '4WD' for 4WD, a red circle with 'US' for US Route, and a red circle with 'ST' for State Route.

MILLER CREEK NW, MT
2017

